

COLLINS WHARF

# REGATTA

COLLINS WHARF



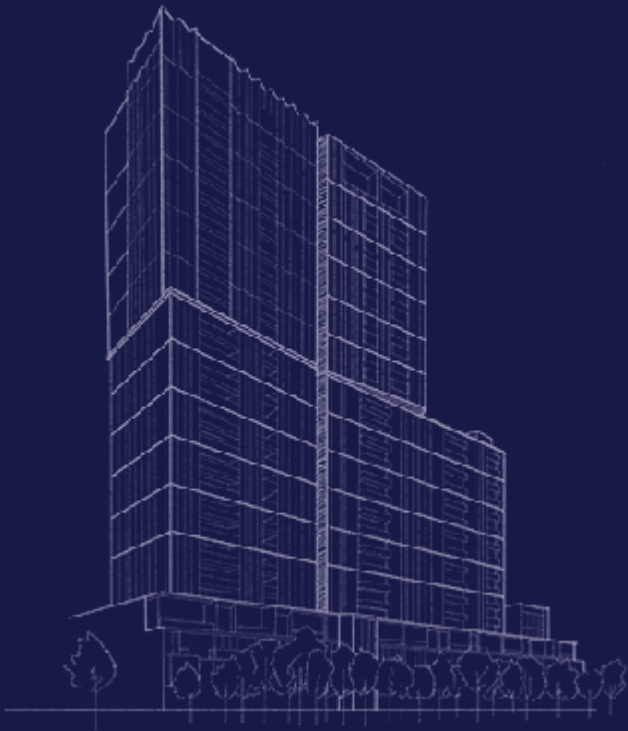


# DISCOVER LIFE ON THE WATER

Welcome to Collins Wharf, an exclusive waterfront neighbourhood, where Melbourne's most iconic street meets the harbour.

Regatta at Collins Wharf sets a new standard in redefining bespoke luxury. It provides an unparalleled dual-waterfront lifestyle where tranquillity and urbanity are in perfect balance.

We invite you to discover a life on water, one that will captivate the senses in a location like no other.



## LIVE WELL, BY THE WATER

Collins Wharf is a unique dual-waterfront location offering stunning views and direct access to the best of city living – at one of the most prestigious addresses in Melbourne. Inspired by the wharf's nautical heritage, award-winning architects Warren and Mahoney have imagined a stunning residential masterpiece. Its shimmering façade reflects the surrounding water and captures the spirit of sails on the bay.



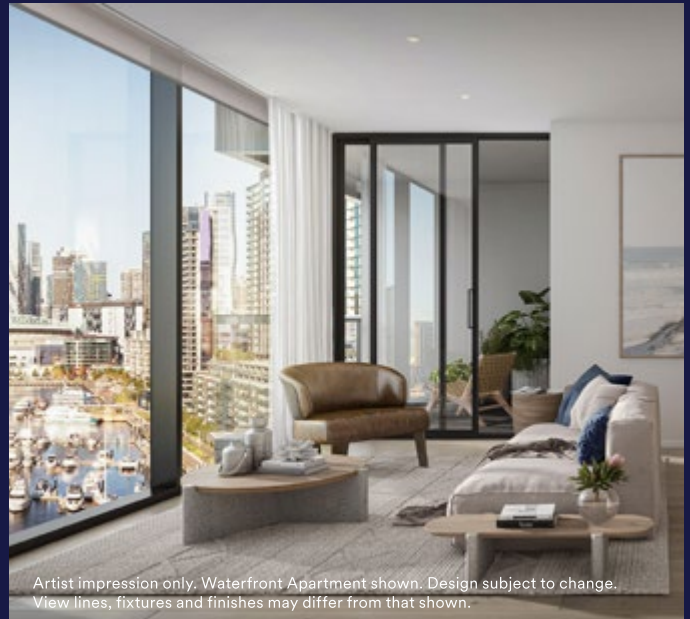
Artist impression only. Subject to planning. Design subject to change.  
View lines, fixtures and finishes may differ from that shown.



# A STUNNING COLLECTION

## WATERFRONT APARTMENTS

One-, two- and three-bedroom residences offer accessible entry points to a Collins Wharf lifestyle – without compromise. Live the good life with state-of-the-art European appliances, premium finishes and flexible spaces that flow effortlessly, as well as a choice between river or harbour views.



# PREMIER COLLECTION



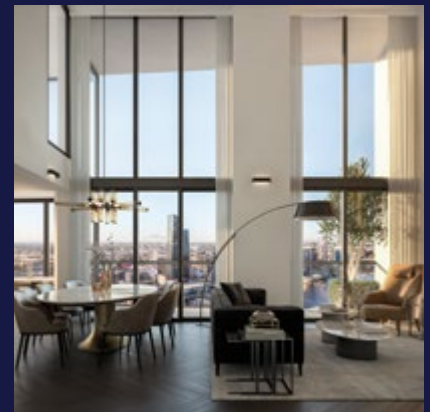
## HARBOURHOMES

The ten Collins Street Harbourhomes each offer pure decadence spread over four levels. From your own private lift and elegant staircase to a secluded rooftop terrace that's just for you, they offer a life reserved for the fortunate few.



## RIVERHOMES

With a limited collection of Riverhomes available, these premium residences make the most of their location. Some residences feature the flowing beauty of double-height living spaces while others offer expansive glass-framed river-frontage views that will never be built out.



## SKYHOMES

Welcome to the height of luxury. Each of the five two-storey Skyhomes provides panoramic scenes of Victoria Harbour and the Yarra River from dawn to dusk, while some penthouses offer double-height living spaces that focus all attention on the view.

# ELEVATE YOUR EXPECTATIONS

## THE COLLINS ROOM

Gather in the stunning residents' lounge and dining room – with Victoria Harbour the spectacular backdrop for your private function.



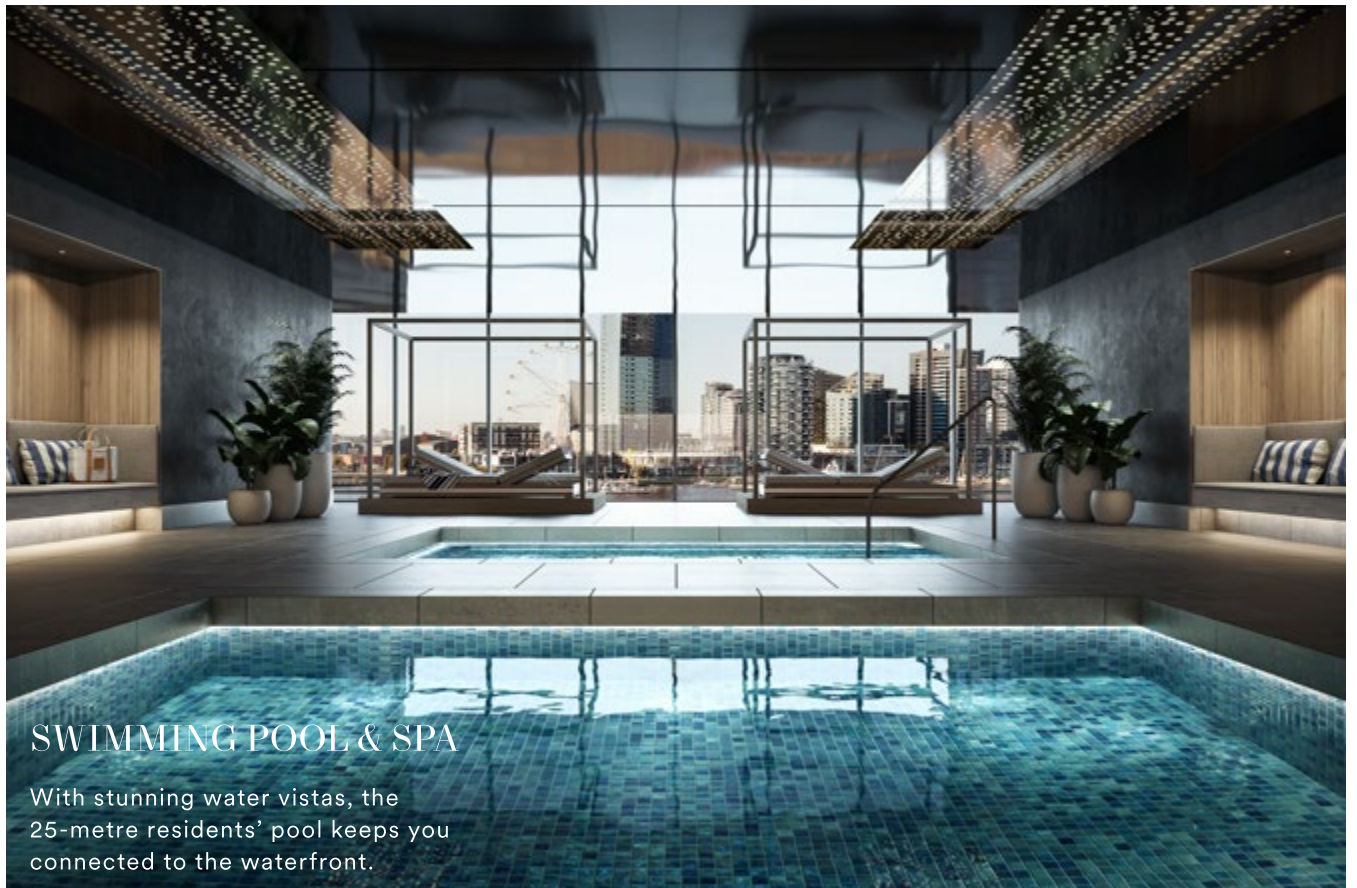
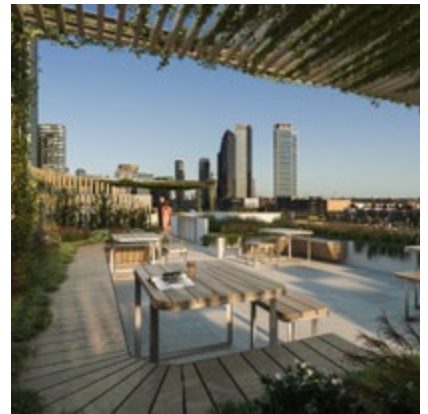
## CONCIERGE

Enjoy five-star, hotel-style concierge convenience including booking services within the precinct, parcel delivery, collection and more – helping make life easier than ever.



## ROOFTOP

Multiple rooftop spaces ensure you stay connected to the outdoors all year-round. Enjoy sweeping water and city views, barbecues, and a glasshouse winter garden.



## SWIMMING POOL & SPA

With stunning water vistas, the 25-metre residents' pool keeps you connected to the waterfront.



# TRANQUILLITY OF THE WATER, ACCESSIBILITY OF THE CITY

Regatta at Collins Wharf is just five minutes by tram or a short walk from the lively Melbourne CBD, putting you moments away from the cultural heart of Australia and its endless number of things to see, do and experience.



## REALISED BY LENDLEASE:



277 FIFTH AVENUE, NEW YORK



ONE CIRCULAR QUAY, SYDNEY



ONE SYDNEY HARBOUR, SYDNEY

LENDLEASE STRIVES  
TO CREATE  
BUILDINGS THAT  
ENRICH THE LIVES  
OF THE PEOPLE WHO  
INHABIT THEM, AND  
PLACES THAT LEAVE  
A POSITIVE LEGACY.

From luxury residential buildings to large-scale commercial and urban regeneration projects, our vision and forward-thinking approach has seen the creation of globally recognised cornerstones and symbols of the communities, cities and the countries they inhabit. Projects like Sydney Opera House, Malaysia's Petronas Twin Towers and award-winning residential towers in Sydney and New York.

With a history spanning more than 60 years, Lendlease has created some of the world's most iconic landmarks and established itself as a leading global integrated real estate and investments group. And with a development portfolio that includes the Americas, Europe, Asia and Australia, our name has become synonymous with quality and delivery.

Disclaimer: The material contained in this brochure has been produced prior to completion of detailed design and construction of Collins Wharf. The development and construction of Collins Wharf is subject to planning approval and may be subject to change. As such, this material does not constitute a representation by the Developer, Vendor or the Agent in respect of the actual size, form, dimensions, specifications or layout of the apartments or other parts of the building. Lendlease does not accept responsibility for any action taken by intending purchasers in reliance on the information in this brochure. The final product may vary from the images shown. Images are artist's impressions only and furniture is not included unless otherwise stated in the contract for sale. Any view lines shown are indicative only as at the date of publication. Actual views from each apartment may vary on completion from that shown. View lines may be impacted by current and future development applications. Changes may be made during development and construction in accordance with the provisions of the contract for sale or planning or authority requirements. Prospective purchasers must make and rely on their own enquiries. Produced by Lendlease Development Pty Ltd July 2023.