

# T R I E L L E

by mirvac



RIVERSIDE RARITY



TIMELESS LUXURY



Chapter Two

# RIVER

22

Chapter One

# CITY

12

Chapter Four

# HOME

72

INSPIRED BY LUXURY'S ULTIMATE  
EXPRESSION, TRIELLE IS A RARE, SHINING  
DIAMOND DEFINING MELBOURNE'S  
NORTH-FACING RIVERBANK.

Chapter Three

# SKY

36





Artist's impression as at Dec 2022. Indicative only and subject to change/development approval. The Trielle building and landscaping is an artist's impression only.



On this precious stretch of riverfront – a coveted pocket of the award-winning Yarra’s Edge precinct – Trielle defines the future of elevated living. The kind born of superior proximity to Melbourne’s finest features, paired with a highly desirable north-facing, riverside position.

A breathtaking offering that is nothing short of extraordinary. Location, vantage, design, service and amenity forge Trielle’s incomparable cachet. A pedigree of excellence amplified by the established and vibrant community of Yarra’s Edge.

# WELCOME TO TRIELLE, A MESMERISING JEWEL ON MELBOURNE’S SKYLINE – THE TREASURE OF YARRA’S EDGE.

**Michael Wiener**  
Design Director, Mirvac Design



Artist's impression as at Dec 2022. The Trielle building is indicative only and subject to change/development approval.



# TRACE

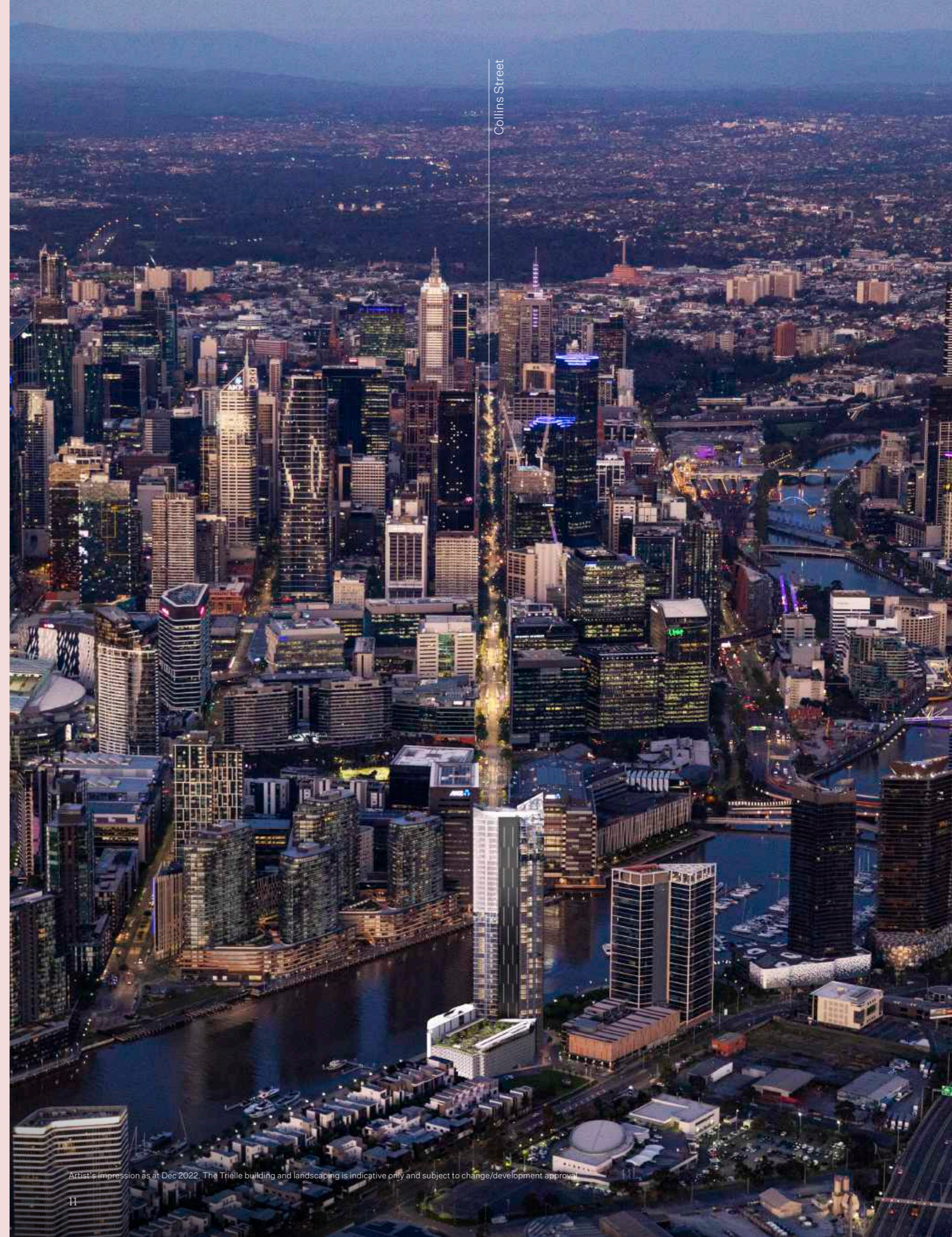
Trace a line from the Paris End of Collins Street to the Yarra River – here stands Trielle, a shimmering beacon on the water's edge. From its north-facing riverside position, commanding a striking view across the CBD and beyond, Trielle stands as the crowning jewel of the Yarra's Edge community and Melbourne at large.

# A

In the heart of Yarra's Edge – crafted with meticulous attention to detail and a deep appreciation for how people want to live – Trielle adds a new dimension to this tranquil oasis, this haven hidden within a heartbeat of the CBD's rich cultural energy.

Access to Collins Street is via Webb Bridge (pedestrian access) and Charles Grimes Bridge (vehicle access) which is approximately 1km from Trielle.

# LINE



Artist's impression as at Dec 2022. The Trielle building and landscaping is indicative only and subject to change/development approval.





CHAPTER ONE

# C I T Y

Positioned on the Collins Street axis, mere moments to the heart of the CBD, Trielle basks in the city's effervescence. Separated only by a short, scenic river walk, Yarra's Edge and Melbourne's vibrant CBD are two parts of a whole.





WE'VE DESIGNED TRIELLE TO CELEBRATE TIME, LEISURE AND ADVENTURE. THE CITY IS YOURS TO ROAM AND ENJOY. MOMENTS FROM HOME, CONNECT WITH THE ICONIC FLAGSHIPS OF COLLINS STREET'S PARIS END.

**Michael Wiener**  
Design Director, Mirvac Design



A riveting life in the heart of Melbourne, one of the world's most vibrant, exciting and culturally rich cities. Trielle is a luxurious base from which to absorb the city's finest features.

Enjoy a leisurely walk along the river towards the CBD's vibrant cafes, laneways and the allure of Collins Street's Paris End shopping. No stroll is complete without several stops to eat, drink and indulge. Home to a globally renowned culinary scene, Melbourne's city centre teems with incredible restaurants, wine bars and lively rooftops.

Access to Collins Street is via Webb Bridge (pedestrian access) and Charles Grimes Bridge (vehicle access) which is approximately 1km from Trielle.



Images show luxury brands of Collins street.





12:15 PM

A leisurely stroll from home into  
the CBD – an afternoon of shopping on  
Collins Street beckons.





## SAVOUR CITY MOMENTS

A morning of shopping, a stroll through the Arts Precinct, dining day and night with friends in world-renowned restaurants. From Trielle, the city and its endless cultural and culinary delights are yours to enjoy.

From your address at Yarra's Edge, Melbourne is your ever changing, always enticing, boundlessly beautiful backyard. Where world-leading restaurants mesmerise diners daily, and globally renowned galleries, theatres and sports arenas stage an endless parade of elite events and entertainment. This is Melbourne – the world at your doorstep.



From Left to Right

- 01 Hazel, Flinders Lane
- 02 Society, Collins Street
- 03 Melbourne Cricket Ground
- 04 Riverside stroll to Southbank Arts Precinct



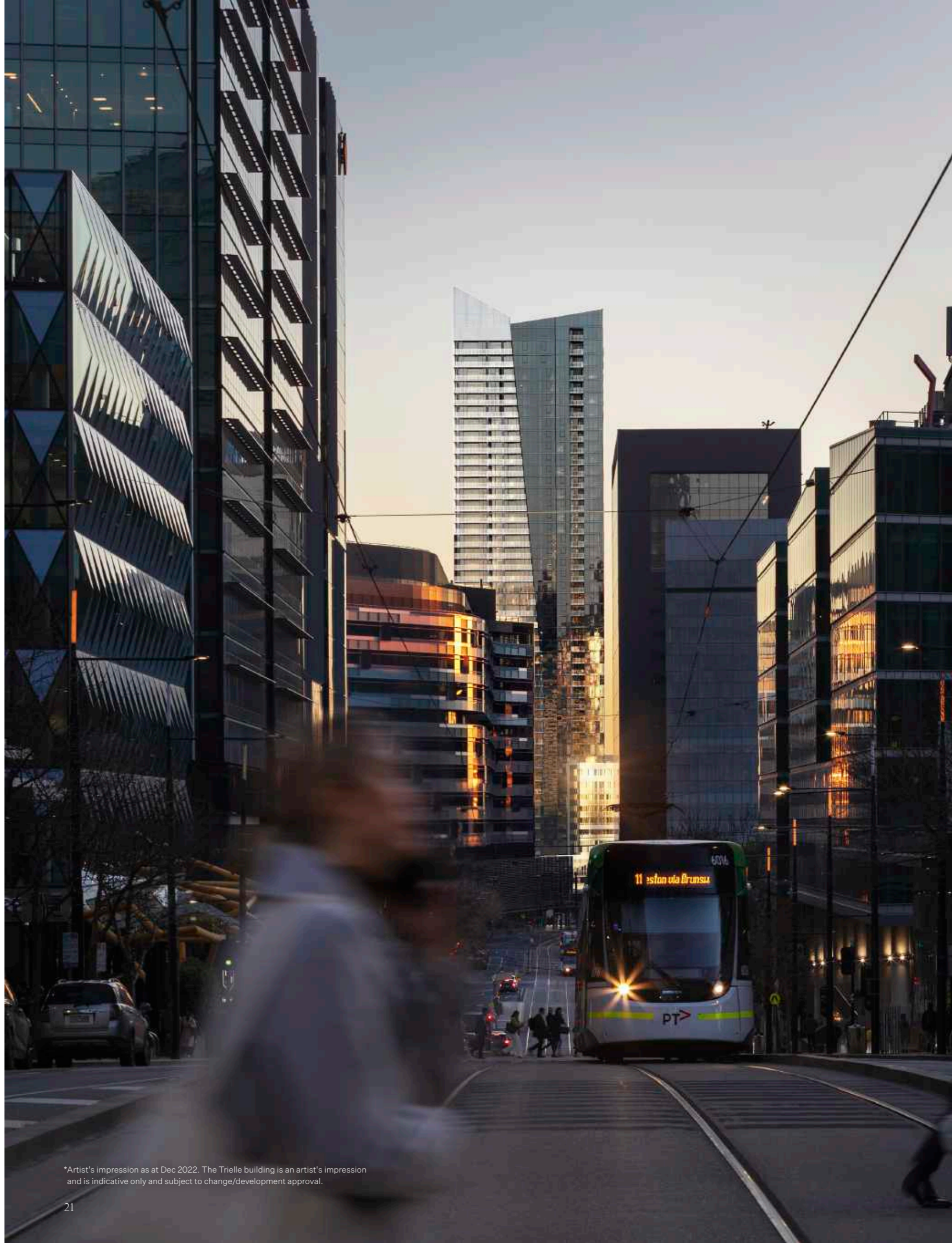


ARRIVAL AT TRIELLE BEGINS LONG BEFORE YOU REACH THE TRANQUIL RIVER. STROLLING ALONG COLLINS STREET, YOUR GAZE FIXED ON THE HORIZON, TRIELLE'S SHIMMERING FAÇADE SERVES AS A BEACON OF HOME.

**Michael Wiener**  
Design Director, Mirvac Design

7:30PM

Trielle sparkles in the golden glow of the sunset.\*



\*Artist's impression as at Dec 2022. The Trielle building is an artist's impression and is indicative only and subject to change/development approval.



CHAPTER TWO

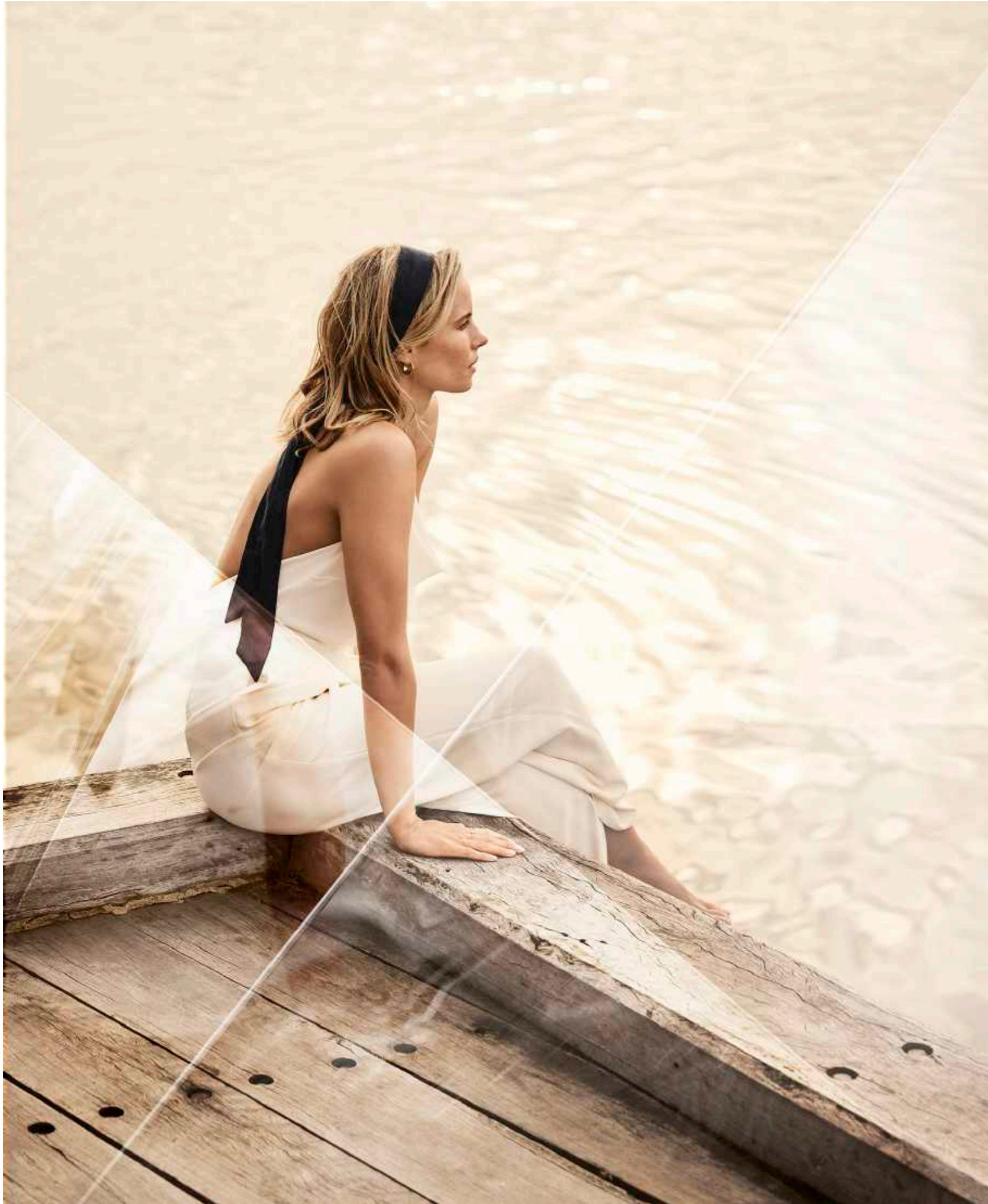
# RIVER

Trielle's true muse, the Yarra River informs and inspires every detail large and small. An immersive world where sophisticated design, unparalleled amenity and nature coalesce to spellbinding effect.



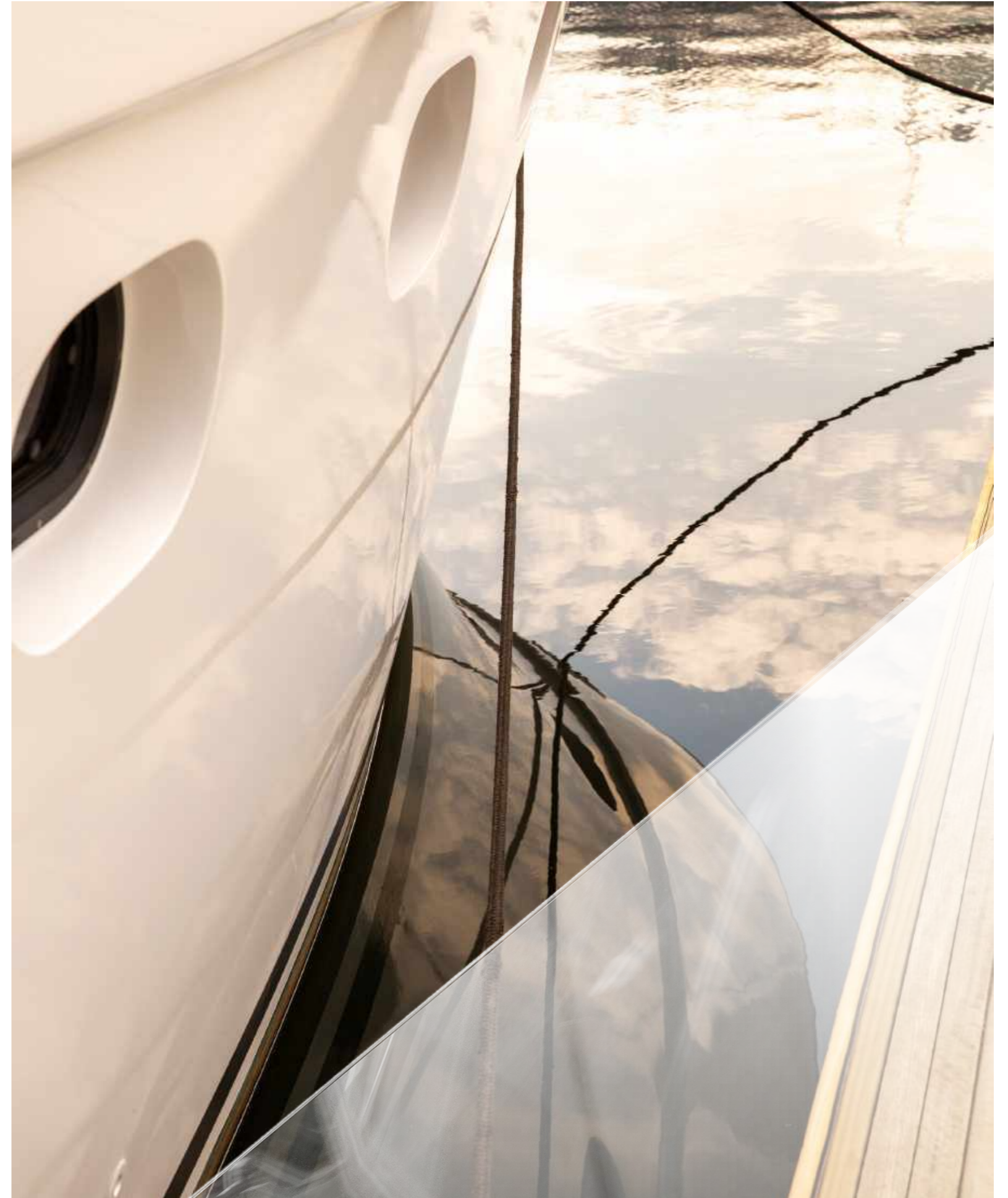






7:00AM

A quiet morning overlooking Marina YE,  
absorbing the river's beauty.

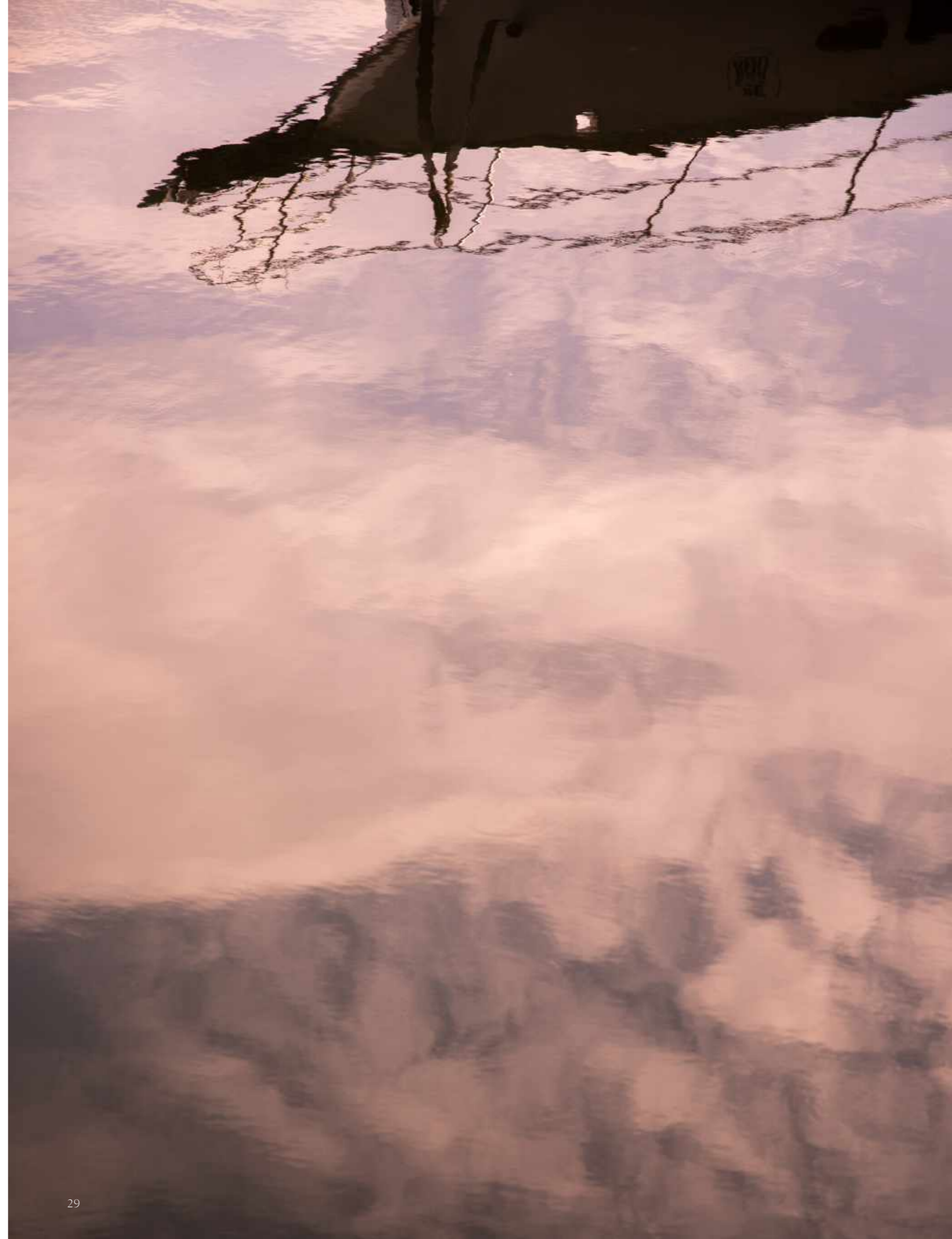


11:00AM

The sun is shining, the breeze is warm – the perfect weather  
for a day on the water.



A few steps from Trielle's entrance, enjoy your own exclusive mooring at Marina YE. With your boat on your doorstep, the river is yours to enjoy for an extravagant celebratory voyage or a casual cruise on a whim.



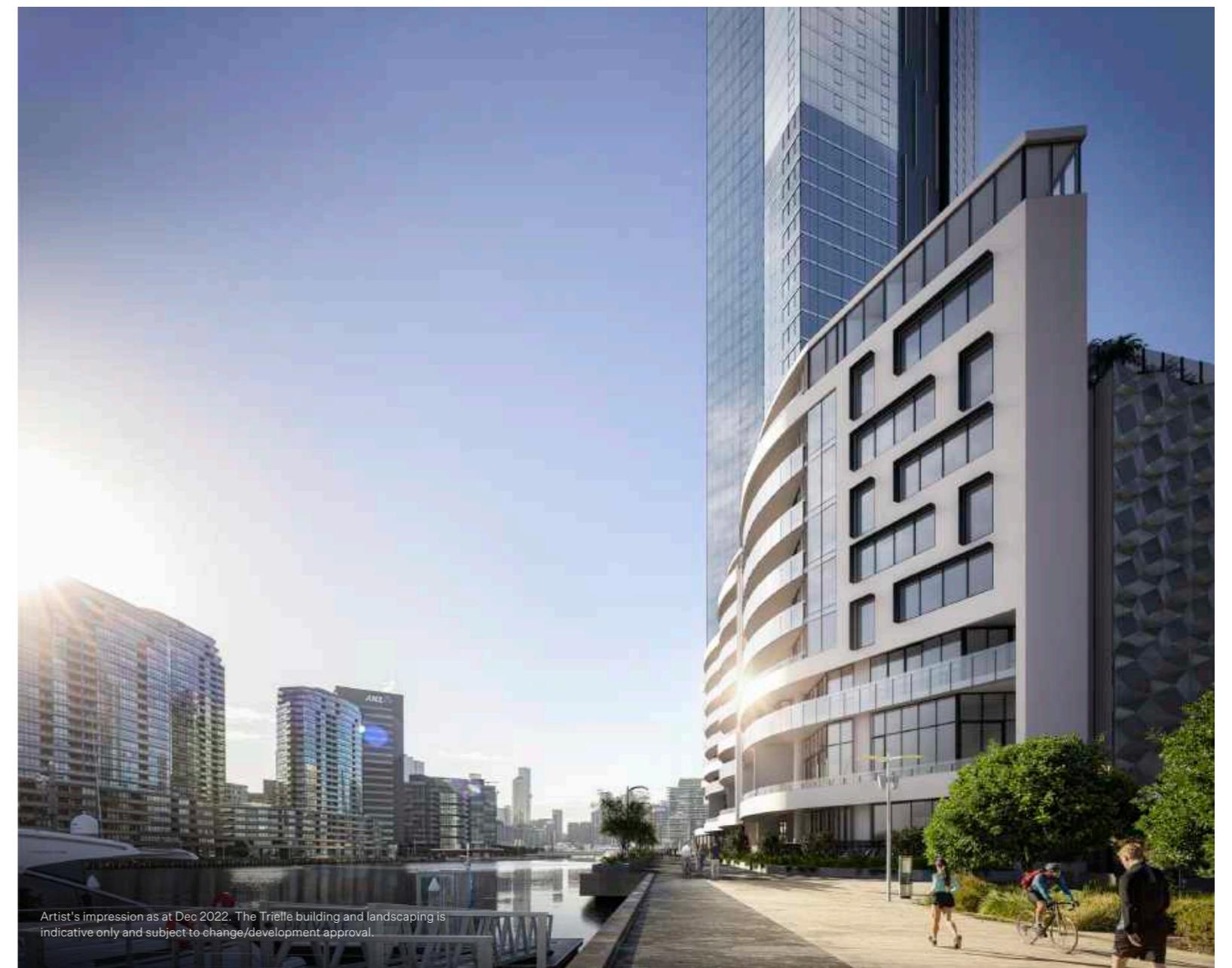




Artist's impression as at Dec 2022. The Trielle building and landscaping is indicative only and subject to change/development approval.

WITH BREATHTAKING NORTH-FACING VIEWS  
ACROSS THE RIVER – TRIELLE SITS IN THE DRESS  
CIRCLE OF MELBOURNE'S WATERFRONT. MARINA YE,  
FISHERMANS BEND, PORT PHILLIP BAY –  
THIS IS MELBOURNE'S FUTURE, AND  
TRIELLE IS A CENTRAL FIGURE.

**Michael Wiener**  
Design Director, Mirvac Design



Artist's impression as at Dec 2022. The Trielle building and landscaping is indicative only and subject to change/development approval.



# YOUR LOCAL NEIGHBOURHOOD

Bordering Yarra's Edge, Fishermans Bend unfurls across 480 acres as Australia's largest urban renewal project. This hub of architectural excellence, sustainability, innovation, business, nature and community – described as 'a city within a park' – will continue to flourish and grow over the years. The Victorian government expects 80,000 Melburnians will call Fishermans Bend home by 2050\*. A current of excitement, culture and community pulses through Yarra's Edge and Fishermans Bend, intertwining the two as major players in Melbourne's bright, progressive future.

Adjoining the west-end of Yarra's Edge, Development Victoria's plans for a new arts, culture and recreation space^ further elevates the precinct as one of Melbourne's most exciting, richly layered destinations.

# TRIELLE

by mrvac



Fishermans Bend\*  
The Victorian government expects Fishermans Bend, Australia's largest urban renewal project, to be home to 80,000 residents, host 2,000 students, and generate 80,000 jobs by 2050.

Artist's impression as at Dec 2022. The Trielle building and landscaping is indicative only and subject to change/development approval. \* Access to Collins Street is via Webb Bridge (pedestrian access) and Charles Grimes Bridge (vehicle access) which is approximately 1km from Trielle.

\*Information included is based on the Fishermans Bend Vision Framework, 2018, and is subject to change and approval by authorities including City of Port Phillip and City of Melbourne. ^ Subject to development approval and delivered by Development Victoria.





## AT YOUR DOORSTEP

Overlooking the river, charged with the energy of the Yarra's Edge community, this scenic stretch of Melbourne is destined to become one of the city's best-loved dining destinations. Enjoy local favourites The Espressonist, Sassone Cucina, Mad Duck Cafe and Hooks on the Yarra while you take in the sights of Marina YE and beyond.

The Yarra's Edge village is evolving. A boutique retail and dining hub\* is planned for the waterfront area, enriching its irresistible appeal.



\*Subject to change and development approval.



A woman with her hair in a bun, wearing a white suit, is reaching her right arm high into the air against a clear blue sky. The lighting is bright, creating strong highlights and shadows on her clothing.

# S

CHAPTER THREE

# K

# Y

A sculptural marvel on the skyline, Trielle signifies dazzling new heights of architecture and design. The drive to create something extraordinary – to reach skyward and touch the clouds.





Artist's impression as at Dec 2022. The Trielle building and landscaping is indicative only and subject to change/development approval.

## TRIELLE SHIMMERS IN THE LIGHT, STRIKING AND RESPLENDENT.

Trielle represents an architectural milestone for Melbourne. Not simply for its spectacular exterior – a mesmerising jewel on the city skyline masterfully designed using distinctive, faceted glazing that reflects both the sky and shimmering river – but for the way its design story is woven through every detail. From grand aesthetic features to subtle gestures of form and function, Trielle is a sculptural masterpiece devoted to living well.



A triumph by Mirvac's award-winning in-house architects, Trielle is inspired by virtuosos of the design world, from the inimitable Le Corbusier to Jeanne Toussaint and Sotirios Voulgaris.

Trielle's carefully considered architecture and interiors by Mirvac Design blend the trailblazing ideas, expertise and artistry of visionaries past and present. The result is a building both timeless and future-focused – the hallmark qualities of history's most iconic feats of architecture.



From Left to Right

- 01 Victor Wong  
Senior Associate, Mirvac Design
- 02 Michael Wiener  
Design Director, Mirvac Design
- 03 Marcella Khusworo  
Interior Designer, Mirvac Design
- 04 Edward Kertawidjaja  
Senior Associate, Mirvac Design







SOARING WALLS OF GLASS  
THAT SPARKLE IN THE SUNLIGHT.  
NORTH-FACING VIEWS ACROSS  
AUSTRALIA'S CULTURE CAPITAL. METRES  
FROM THE RIVER. THE BEAUTY OF  
NATURE INFUSING  
EVERY DAY.

TRIELLE IS NOTHING  
SHORT OF EXTRAORDINARY.

**Michael Wiener**

Design Director, Mirvac Design





# A WARM WELCOME HOME



Artist's impression as at Jan 2022. Design of The Saletta Lounge is an indicative design and its materials, colours, shape, size and design are not finalised and subject to change.



Trielle exists to set a new standard of luxury. To cultivate the kind of lifestyle where your needs are within easy reach. Where home shines with superior quality. Where each detail is considered to smooth the course of the day and to enrich every experience.

A dedicated concierge tends to your needs with meticulous attention to detail, ensuring each is met with precision and professionalism. Gaining back precious time in the day, you are free to spend it however you wish. Enjoy Trielle's highly considered spaces and services, designed and reserved for residents' enjoyment.

TIME—LIFE'S  
MOST PRECIOUS  
COMMODITY

ENJOY TRIELLE'S HIGHLY CONSIDERED  
SPACES AND SERVICES, DESIGNED AND RESERVED  
FOR RESIDENTS' ENJOYMENT.



## SPACE TO FOCUS

Warm and inviting yet perfectly private, Trielle's multiple fully equipped workspaces are designed to complement hybrid and flexible working styles.

In The Biblioteca, cocoon with your laptop in a quiet corner overlooking the Promenade Grove. Relax, work or read in the comfort of The Biblioteca's business class pods, designed for equal parts focus and repose.

Maximise productivity and comfort in The Mills Place Work From Home Pods located on Trielle's ground floor. A peaceful, sophisticated space to zone in on important projects, pods are available to book for a few hours or a full day. In these dedicated 'office' spaces, residents can minimise distractions, and maintain refreshing distance between the demands of work and the tranquility of home.



# THE BIBLIOTECA

RESIDENTS' LIBRARY



Artist's impression as at Jan 2022. Design of The Biblioteca is an indicative design and its materials colours, shape, size and design are not finalised and subject to change.



# MEANINGFUL CONNECTIONS

The Salone is a residents' lounge designed for an unrushed rendezvous. With interiors styled for comfort and elegance, this warm yet open space is where neighbours can connect over a glass of wine, to discuss the latest literary masterpiece, the state of local and worldly affairs, or gather before an evening at Hamer Hall.

With its richly textured, alluring interior – and a north-facing riverfront view – Trielle's Piano Lounge can rival the CBD's best-loved jazz haunts. A lounge and whisky bar positioned towards the river's edge, this beautifully intimate space invites residents to wind down after a long day, relaxing to the soothing melodies of a self-playing piano.



# THE SALONE

## PIANO LOUNGE



Artist's impression as at Jan 2022. Design of The Salone Piano Lounge is an indicative design and its materials colours, shape, size and design are not finalised and subject to change.



Host an elegant dinner party in the Chef's Table dining room adjoining the Piano Lounge. With its impressive wine fridge and natural stone table, this striking space sets the stage for truly memorable evenings.



# EPICUREAN DELIGHTS



Artist's impression as at Jan 2022. Design of the Chef's Table Dining Room is an indicative design and its materials colours, shape, size and design are not finalised and subject to change.





Artist's impression as at Dec 2022. Indicative only and subject to change, development approval. Design of The Oasis rooftop is an indicative design and its materials, colours, shape, size, landscaping and design are not finalised and subject to change.



# THE OASIS

## WELLNESS CLUB

The Oasis is a verdant urban rainforest flourishing seven storeys above the Yarra's Edge promenade. With a running stream flowing through its centre, the wilderness of The Oasis delivers an instant dose of transportive calm and reprieve.

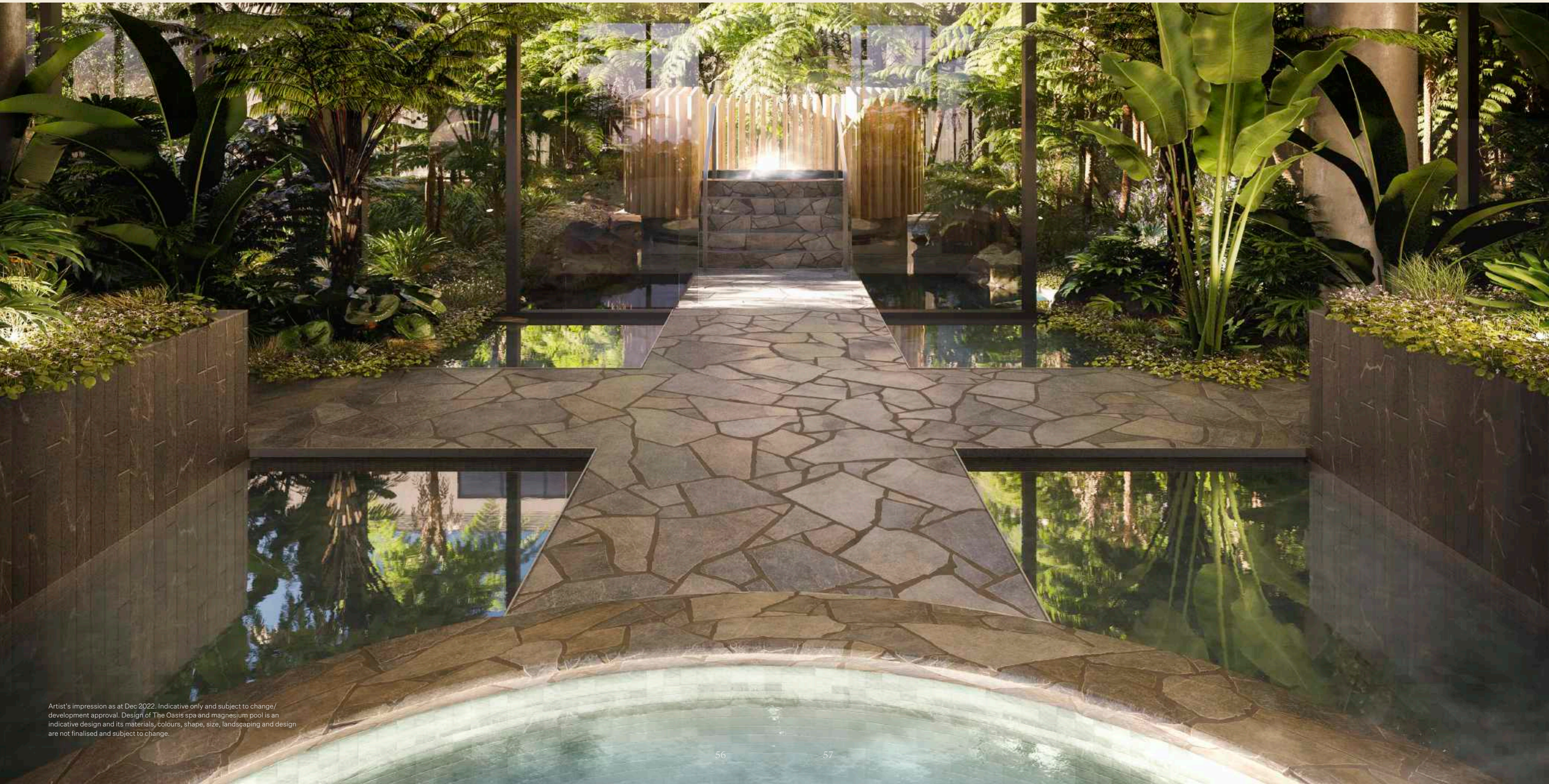


# THE OASIS IN PARTNERSHIP WITH NAOMI GREGORY

Spa Sessions founder, Naomi Gregory, is Australia's leading luxury spa guru. In collaboration with Mirvac's Design team, Naomi has designed The Oasis at Trielle – a Scandinavian-inspired wellness club. In this blissful, resort-like atmosphere, residents can indulge regularly in rejuvenating treatments such as a facial, massage and hydrotherapy.

In addition to Trielle's one-of-a-kind Oasis, Naomi's expert consultation has guided the design and function of The Continental Sorrento's Aurora Spa and Bathhouse, Halcyon House, COMO The Treasury, and spaQ at QT Hotels in Sydney and the Gold Coast.

Naomi's impressive portfolio also includes high-profile projects in New Zealand, Thailand, Fiji and the Greek Islands.



Artist's impression as at Dec 2022. Indicative only and subject to change/development approval. Design of The Oasis spa and magnesium pool is an indicative design and its materials, colours, shape, size, landscaping and design are not finalised and subject to change.



IMMERSE

IN

THE OASIS IN  
PARTNERSHIP WITH  
NAOMI GREGORY

SELF-CARE SOARS TO NEW HEIGHTS  
WITH EFFORTLESS ACCESS TO THE STUNNING  
SERVICE AND AMENITIES OF THE OASIS.  
ON ANY GIVEN DAY, ENJOY THE  
RESTORATIVE BENEFITS OF:

---

25m Lap Pool

---

Day Spa Treatment Rooms

---

Sauna

---

Cold-Pail Contrast Treatment

---

Hot Magnesium Pool

---

Yoga and Pilates Room

---

Biophilic Gym

---

Tranquility Pods Nestled in Nature

---

BEAUTY





Artist's impression as at Dec 2022. Design of The Oasis lap pool is an indicative design and its materials, colours, shape, size, landscaping and design are not finalised and subject to change.





YOUR  
PLACE OF INNER  
REFLECTION

6:30 AM

Set the tone of your day with a morning swim,  
facial and massage at The Oasis.





Artist's impression as at Dec 2022. Design of The Oasis rooftop is an indicative design and its materials, colours, shape, size, landscaping and design are not finalised and subject to change.



YOUR

PERSONAL

OASIS



# RELAX, PLAY, ENTERTAIN AND UNWIND

Complementing Trielle's community-oriented spaces, gather with friends and neighbours in the games room and sports lounge, equipped with pool and game tables.

A teppanyaki bar provides the perfect Friday night feast – and entertainment. The ideal way to impress guests without lifting a finger.

Whenever the mood strikes, polish your swing or putting stroke in the Golf Simulator Studio.

Enjoy dinner and a film without leaving home in the luxurious cinema room.

On balmy nights, there's nowhere better to sip Chablis than Trielle's sunken fire pit.



Artist's impression as at Dec 2022. Design of the Golf Simulator is an indicative design and its materials, colours, shape, size and design are not finalised and subject to change.





Artist's impression as at Dec 2022. Design of The Oasis rooftop is an indicative design and its materials, colours, shape, size, landscaping and design are indicative only and subject to change/development approval.



CHAPTER FOUR

# H O M E

Where the heart is. Where the river flows. Where the city lights twinkle like your own private stars. Where Mirvac's vision of an oasis on the city's edge comes to life. This is home – where timeless luxury lives in every detail.



SPECTACULAR FROM EVERY VANTAGE,  
LIKE A DIAMOND OF BLINDING CLARITY,  
TRIELLE GLITTERS ON THE OUTSIDE AND  
GLOWS ON THE INSIDE. A TRUE JEWEL IN  
THE CROWN OF YARRA'S EDGE.

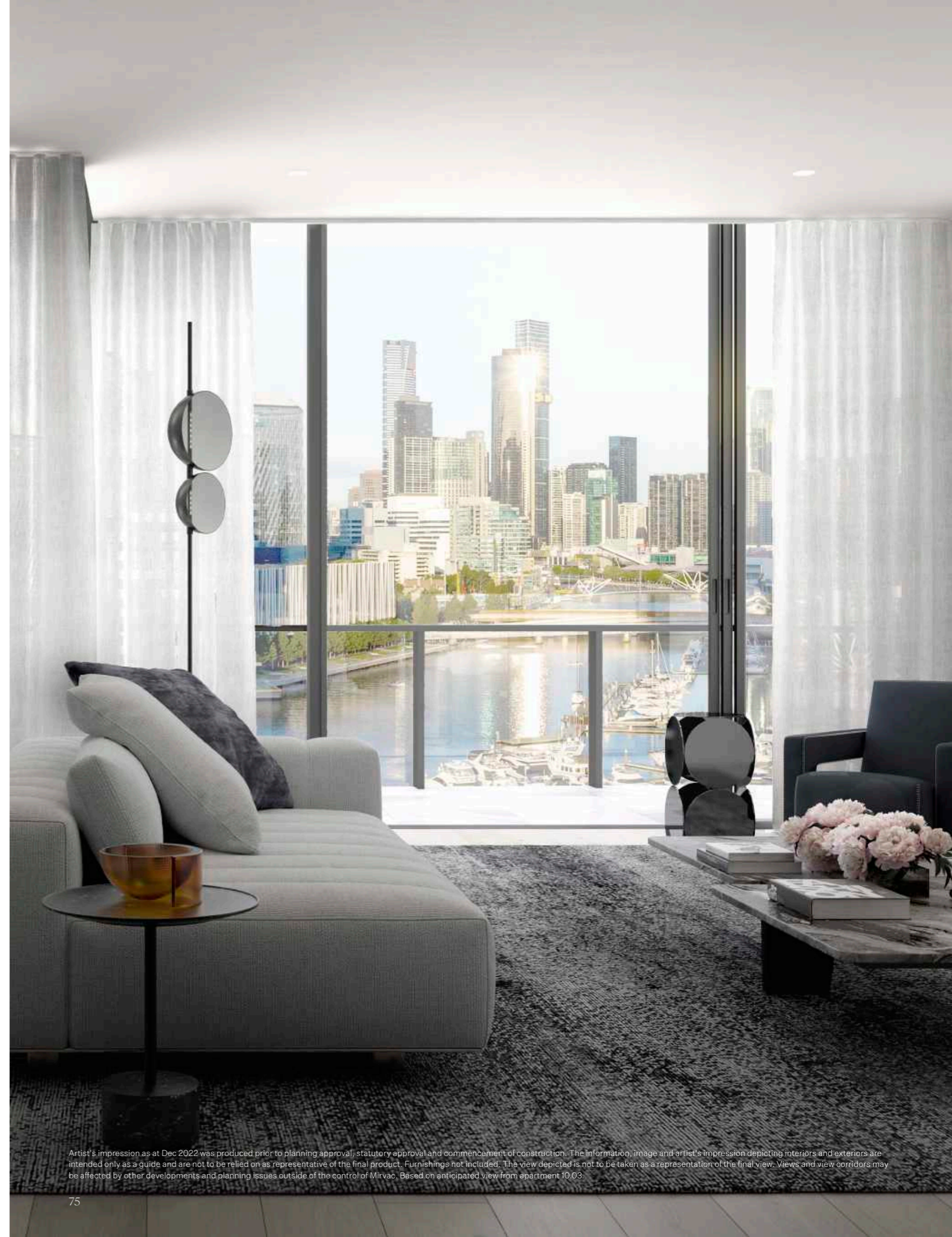
**Michael Wiener**

Design Director, Mirvac Design

Trielle's vision of luxury comes to life in countless ways, one of the most impressive being its generously oversized apartments – some of the largest at Yarra's Edge. With fewer apartments per floor on average compared to earlier towers, Trielle residences boast impressive ceiling heights, effecting a dramatic sense of space and grandeur.

Hotel-like in their extraordinary quality, Trielle's finishes set a new standard for luxury homes. Contemporary yet timeless, each exquisite feature and finish is its own subtle tribute to the beauty of Trielle and its muse, the Yarra River.

It's a language of beauty that speaks through every detail, inside and out. Trielle's striking faceted architecture echoes throughout the building, with elegant geometric accents and reflective glass elements coalescing to create a fluid interior rhythm.



Artist's impression as at Dec 2022 was produced prior to planning approval, statutory approval and commencement of construction. The information, image and artist's impression depicting interiors and exteriors are intended only as a guide and are not to be relied on as representative of the final product. Furnishings not included. The view depicted is not to be taken as a representation of the final view. Views and view corridors may be affected by other developments and planning issues outside of the control of Mirvac. Based on anticipated view from apartment 10.03.



With its unrivalled location and orientation, combined with exceptional-quality services and amenities, Trielle offers the opportunity for a life beyond imagination.

Favouring natural stone and rich textures, with metallic and glass accents mirroring the exterior design language, Trielle's residences are imbued with an innate sense of home – a warm invitation to make each space your own.

Designed for entertaining – as well as for comfort and convenience – each Trielle kitchen is highly sculptural. Anchored by a faceted stone bench fitted with soft LED lighting, the kitchen becomes another striking chapter in Trielle's diamond-inspired design story.

IMBUED WITH WARMTH AND  
SOPHISTICATION, TRIELLE RESIDENCES  
BOAST AN INNATE SENSE OF HOME.



Artist's impression as at Dec 2022 was produced prior to planning approval, statutory approval and commencement of construction. The information, image and artist's impression depicting interiors and exteriors are intended only as a guide and are not to be relied on as a representative of the final product. Furnishings not included. Based on anticipated view from apartment 28.01.





In the bathrooms, Trielle's signature faceted bathtub commands attention. Custom designed and made from stone, the sculptural bathtub and basins speak to Trielle's precious jewel-like quality.

EXUDING THE STYLE  
AND QUALITY OF A 6-STAR HOTEL,  
TRIELLE BATHROOMS REPRESENT  
ULTIMATE LUXURY.

**Michael Wiener**  
Design Director, Mirvac Design

Artist's impression as at Dec 2022 was produced prior to planning approval, statutory approval and commencement of construction. The information, image and artist's impression depicting interiors are intended only as a guide and are not to be relied on as a representative of the final product. Furnishings not included. Based on apartment 38.02.



Inviting residents to imbue their home with their own style and flair, Trielle's interiors offer two sophisticated palettes.

With its light, contemporary hues, Luminosa is an ode to the river and the ways in which light catches, shimmers and dances on its surface.

Favouring the dramatic effect of darker, seductive shades, Inchiostro draws inspiration from the night sky, a rich and moody canvas of sparkling stars.



III  
LUMINOSA



III  
INCHIOSTRO





TRIELLE  
SUB-PENTHOUSE  
COLLECTION

A LIFE OF INDESCRIBABLE  
LUXURY AWAITS



Trielle's Sub-Penthouses boast a TV unit with built-in joinery and natural stone, built in bar and feature doors for a seamless, sophisticated finish.

In the scullery, live the entertainer's dream with a steam oven, speed oven, Gaggenau coffee machine and dishwasher. Appliances by Sub-Zero, Wolf and Gaggenau, along with a Bora induction cooktop and downdraft extractor elevate the kitchen to exceptional standards.\*



Artist's impression as at Dec 2022 was produced prior to planning approval, statutory approval and commencement of construction. The information, image and artist's impression depicting interiors and exteriors are intended only as a guide and are not to be relied on as a representative of the final product. Furnishings not included. Based on apartment 9.02.

\* In the event appliances become unavailable, Mirvac will replace with appliances of a similar standard.





Artist's impression as at Dec 2022 was produced prior to planning approval, statutory approval and commencement of construction. The information, image and artist's impression depicting interiors and exteriors are intended only as a guide and are not to be relied on as representative of the final product. Furnishings not included. The view depicted is not to be taken as a representation of the final view. Views and view corridors may be affected by other developments and planning issues outside of the control of Mirvac. Based on anticipated view from apartment 9.02.





Artist's impression as at Dec 2022 was produced prior to planning approval, statutory approval and commencement of construction. The information, image and artist's impression depicting interiors and exteriors are intended only as a guide and are not to be relied on as representative of the final product. Furnishings not included. The view depicted is not to be taken as a representation of the final view. Views and view corridors may be affected by other developments and planning issues outside of the control of Mirvac. Based on anticipated view from apartment 42.02.





Fluted shower screens, heated towel rails, a freestanding jewel-like bath and natural stone benchtops create a sanctuary-like experience in the bathroom. A tranquil space reminiscent of the world's most luxurious hotels.





TRIELLE  
PRESTIGE  
COLLECTION

EMBRACE NEW HEIGHTS  
OF PERFECTION





Trielle's ultimate luxury experience shines bright in the Prestige Collection. Capacious floorplans and generous balconies overlook the river and city, complemented by living spaces that showcase exceptional design and an entertainer's kitchen fitted with Gaggenau appliances\*.

Artist's impression as at Dec 2022 was produced prior to planning approval, statutory approval and commencement of construction. The information, image and artist's impression depicting interiors and exteriors are intended only as a guide and are not to be relied on as a representative of the final product. Furnishings not included. Based on apartment 24.03.

\*In the event appliances become unavailable, Mirvac will replace with appliances of a similar standard.





A life on the river energises, calms and inspires. From your desk, enjoy the endless benefits that a beautiful environment has on work, creativity and mindset.

Designed with ample space for modern workers – open, airy and light-filled – Trielle seamlessly integrates flexible-working features, articulated with the utmost sophistication.

Artist's impression as at Dec 2022 was produced prior to planning approval, statutory approval and commencement of construction. The information, image and artist's impression depicting interiors and exteriors are intended only as a guide and are not to be relied on as representative of the final product. Furnishings not included. The view depicted is not to be taken as a representation of the final view. Views and view corridors may be affected by other developments and planning issues outside of the control of Mirvac. Based on anticipated view from apartment 10.03.





Artist's impression as at Dec 2022 was produced prior to planning approval, statutory approval and commencement of construction. The information, image and artist's impression depicting interiors and exteriors are intended only as a guide and are not to be relied on as a representative of the final product. Furnishings not included. The view depicted is not to be taken as a representation of the final view. Views and view corridors may be affected by other developments and planning issues outside of the control of Mirvac. Based on anticipated view from apartment 29.01.



Generously oversized bedrooms boast floor-to-ceiling windows. Watch the to and fro of daily life as the sun traces its arc across Melbourne's sky.

Crafted from outstanding materials and boasting exquisite joinery, generous walk-in wardrobes are the perfect showcase for your finest clothes.



Artist's impression as at Dec 2022 was produced prior to planning approval, statutory approval and commencement of construction. The information, image and artist's impression depicting interiors and exteriors are intended only as a guide and are not to be relied on as representative of the final product. Furnishings not included. The view depicted is not to be taken as a representation of the final view. Views and view corridors may be affected by other developments and planning issues outside of the control of Mirvac. Based on anticipated view from apartment 8.02.





TRIELLE  
SIGNATURE  
COLLECTION

A LEGACY OF  
TIMELESSNESS



Boasting exceptional design and luxurious materials throughout, Trielle's Signature Collection offers generous, light-filled space and stunning views.

Equipped with a Miele induction cooktop, pyrolytic oven and semi-integrated dishwasher\*, Signature Collection kitchens exude elegance.



Artist's impression as at Dec 2022 was produced prior to planning approval, statutory approval and commencement of construction. The information, image and artist's impression depicting interiors and exteriors are intended only as a guide and are not to be relied on as representative of the final product. Furnishings not included. The view depicted is not to be taken as a representation of the final view. Views and view corridors may be affected by other developments and planning issues outside of the control of Mirvac. Based on anticipated view from apartment 28.02.

\* In the event appliances become unavailable, Mirvac will replace with appliances of a similar standard.



In the bathroom, a gem-like basin and rain shower create the ultimate luxury experience for everyday ablutions.

A Signature Collection residence is designed with the utmost consideration for low-maintenance living. A haven in which to celebrate life – to maximise every moment in comfort and style.



Artist's impression as at Dec 2022 was produced prior to planning approval, statutory approval and commencement of construction. The information, image and artist's impression depicting interiors are intended only as a guide and are not to be relied on as a representative of the final product. Furnishings not included. Based on apartment 28.01.



CHAPTER FIVE

# S U S T A I N A B I L I T Y

Artist's impression as at Dec 2022. Indicative only and subject to change/development approval. Design of The Oasis rooftop is an indicative design and its materials, colours, shape, size, landscaping and design are not finalised and subject to change.





IN KEEPING WITH MIRVAC'S IMPECCABLE STANDARDS OF ARCHITECTURE, INTERIOR DESIGN AND CRAFTSMANSHIP, TRIELLE'S COMMITMENT TO SUSTAINABILITY IS PARAMOUNT. A FULLY ELECTRIC BUILDING DESIGNED TO LEAVE A POSITIVE LEGACY, TRIELLE'S SUSTAINABILITY CREDENTIALS WILL EVOLVE IN STEP WITH CONSTRUCTION, EMBRACING NEW ENVIRONMENTALLY GEARED TECHNOLOGIES AS THEY EMERGE.

Mirvac is firmly committed to a sustainable future that honours and preserves nature and the environment. At Trielle, we articulate this commitment through intelligent design choices and building features such as:

#### Energy

6.6 Star NatHERS average for apartments

Super high-efficiency heat pump hot water system (no gas)

Induction cooktops only

Solar PV provided on top of the Level 7 pool and Level 9 podium apartments. Electricity from the PV array will be used to offset a portion of common area costs as well as service certain apartments

Common area lighting is occupancy controlled

#### Water

High-efficiency showerheads, basin taps, dishwashers and laundry mixers

40,000L rainwater tank for irrigation of The Oasis planting on Level 7

Application of appropriate plant species for relevant landscaped areas to minimise irrigation water requirement

Drip Irrigation System installed for landscaped areas

#### Transport

Up to 25kW dual EV fast charger supplied within car park

Every car space enabled up to 7kW of EV charger in the future

82 bicycle storage spaces

5 bookable E-Bikes

#### Waste

Where possible, building works will utilise sustainable materials such as Forestry Stewardship Council (FSC) certified timbers or equivalent. Local and plantation-sourced will be preferred to those sourced from old-growth forests and from distant locations where ecosystems may be under threat or poorly managed

Organic Processing Unit supplied within the car park for residents to dispose of organic waste

Recycling bins and chute supplied on each level

Designated hard and e-waste storage areas in the waste room for residents' use. Building management responsible for collection.





THE EASTBOURNE, MELBOURNE



ISLE, BRISBANE



THE MELBURNIAN, MELBOURNE

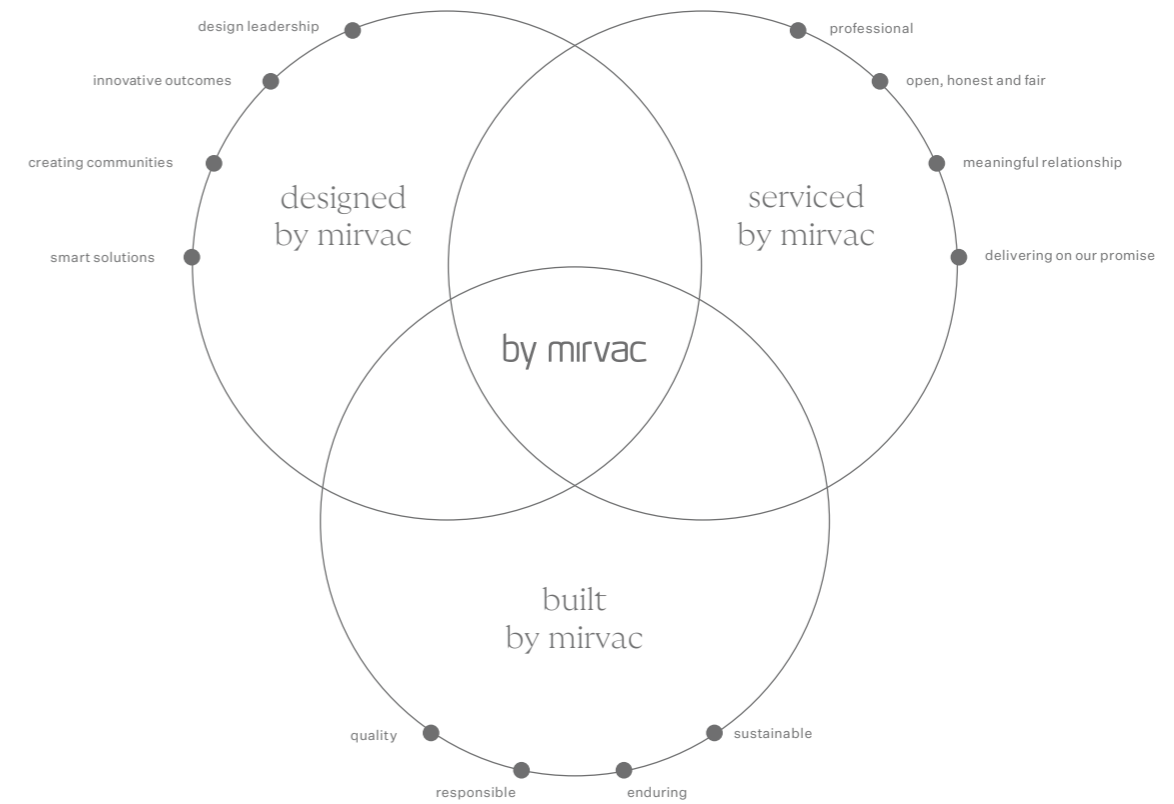


THE FREDERICK, SYDNEY

## QUALITY AND CARE IN EVERY LITTLE DETAIL

### THE MIRVAC DIFFERENCE

For over 50 years we have been reimagining urban life in Australia — creating exceptional living experiences through the pursuit of quality and care in every little detail. You can benefit from our visionary philosophy, customer-first approach and our all-under-one-roof knowledge, passion, experience, service and delivery.



★ ★ ★ ★ ★  
MIRVAC CONSTRUCTIONS  
5 STAR GOLD RATING\*



800+ AWARDS WON



\* Rating of Mirvac Constructions Pty Limited (rated by an independent rating tool and operating in New South Wales) The use of the iCIRT star-rating is subject to Equifax's terms, exclusions and/or disclaimers which are available at [www.buildrating.com](http://www.buildrating.com) Please scan the QR code for further information on this particular iCIRT star-rating. Issued by international ratings agency Equifax, the iCIRT (Independent Construction Industry Rating Tool) star rating assesses the capability, capacity and ability of a company to deliver a trustworthy building.



TRIELLE.MIRVAC.COM



#### REIMAGINING COUNTRY

Artwork: 'Reimagining Country', created by Riki Salam (Mualgal, Kaurareg, Kuku Yalanji) of We are 27 Creative.

Mirvac acknowledges and pays our respects to Australia's First Nations and Torres Strait Islander peoples, the Traditional Custodians of lands, waterways, and skies across Australia. We acknowledge the Wurundjeri Woi Wurrung and Bunurong peoples of the Kulin Nation, and thank them for sharing the land on which we live, work, and learn.

The content of this brochure was produced prior to completion, and prior to the receipt of final planning approvals. Photographs, diagrams and artists' impressions depicting interiors, exteriors and indicative views are a guide only. Views depicted in this brochure are indicative only and should not be relied upon as representative of any final views from any particular apartment. Purchasers should make their own enquiries as to the impact of any proposed surrounding development on any views. Furnishings not included. The information provided in this brochure, including those images, is believed to be correct at the time of printing but will change as the development and planning approvals proceed. Changes will also be made during the development of the project and specifications, details and fittings may be changed without notice. Purchasers must rely on their own continuing enquiries. To the extent permitted by law, this brochure is not an offer or a contract. Mirvac expressly excludes any and all liability relating to, or resulting from, the use of or reliance on, any information contained in this brochure by any person. Mirvac (Docklands) Pty Ltd ABN 30 080 378 641. Version 1. Printed February 2023. Date effective 03/02/2023. Copyright © 2023 Mirvac (Docklands) Pty Ltd. All Rights Reserved.



