

MOTIF 3220

MOTIF 3220

MOTIF 3220

MOTIF 3220

MOTIF 3220



Contents

- 03. This is Motif
- 04. Inside the Homes
- 08. Around the Corner
- 09. While You are Here
- 11. Creative Partners



This is Motif

A motif is any element which recurs throughout and contributes to the narrative, mood, or theme. At Motif, it's a vibe. Surrounded by lifestyle for days, Motif is perfectly placed between the Bay and Geelong's best wine bars.

Architecturally designed by Rothelowman, this collection of apartments aims higher from quality of build to quality of living. Creating a sense of community and connectivity, Motif is for those that want a bit more from the place they call home. It's a warm welcome to Geelong's vibrant artistic pulse — a story that just keeps getting better.



Inside the Homes

Curious and contemporary, Motif stands out in its context. With architecture and interiors designed by Rothelowman to communicate the best Geelong has to offer, it's a place that celebrates culture and diversity. A progressive place to call home, and a beautiful one at that too.

With apartments across three different configuration types, Motif is layered and complex, promising a place in Geelong's rich lifestyle that's more than just that. It's personalised, for residents that bring plenty of character themselves.

From the outside, rust coloured metal finishes and sand coloured textured concrete set a modern tone. Inside, the style narrative unfolds in three directions — there's a bright cream colour story, a muted grey story, and a refined rust story. Facing Geelong's waterfront, but Bay views aren't the only aspect to look forward to.

rothelowman

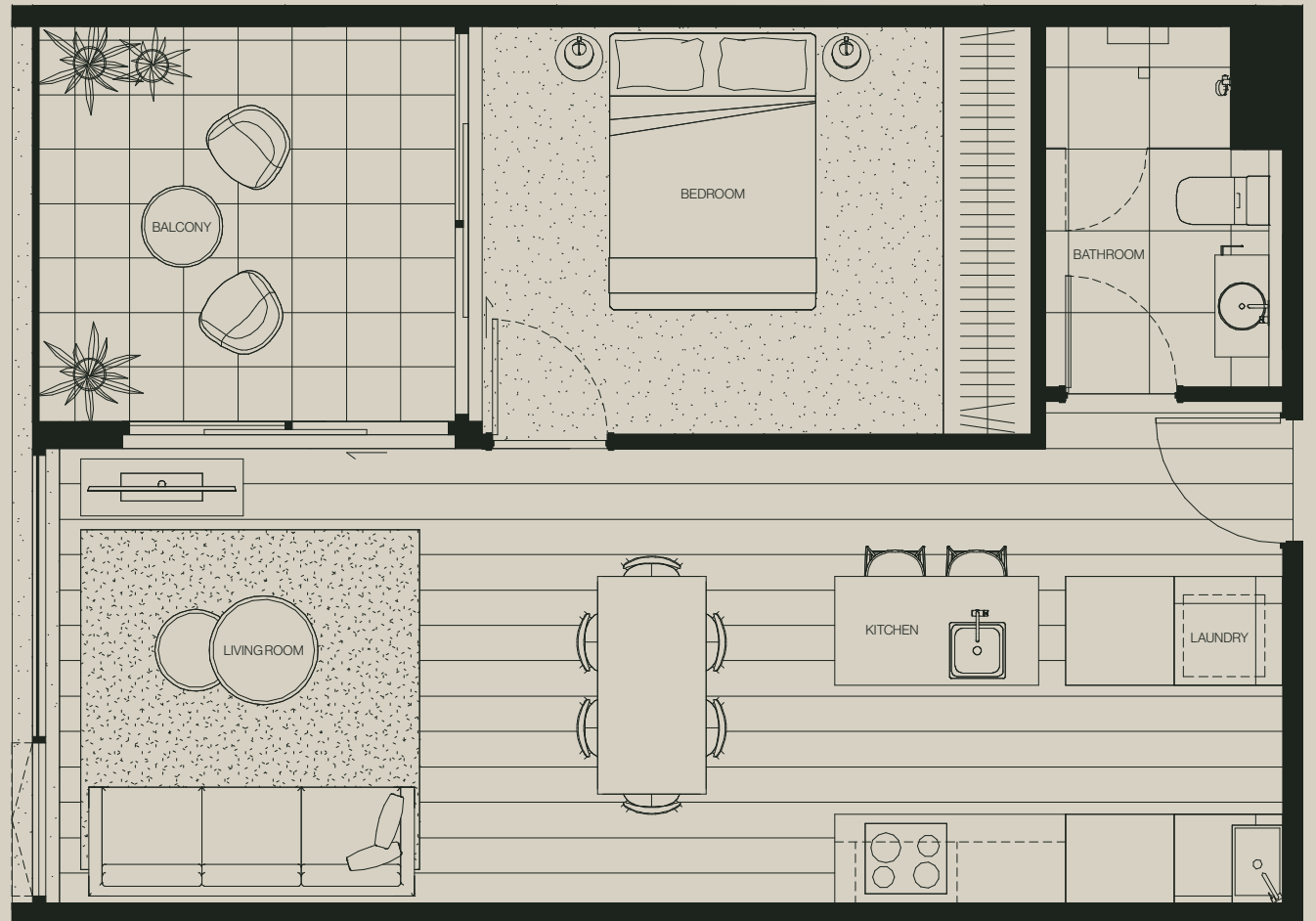
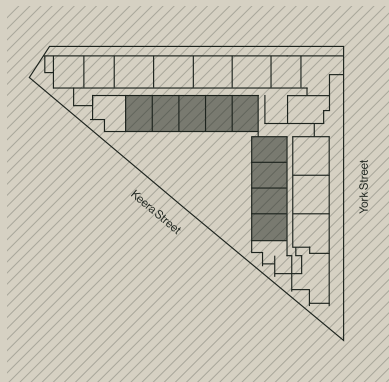


Apartment Type 1E

🛏 1 🚪 1 🚗 1

Total Size: 51.9m²
Open Space: 8m²
Layout: Type 1E
Type: 1 Bed

N
⊕ Scale 1:50

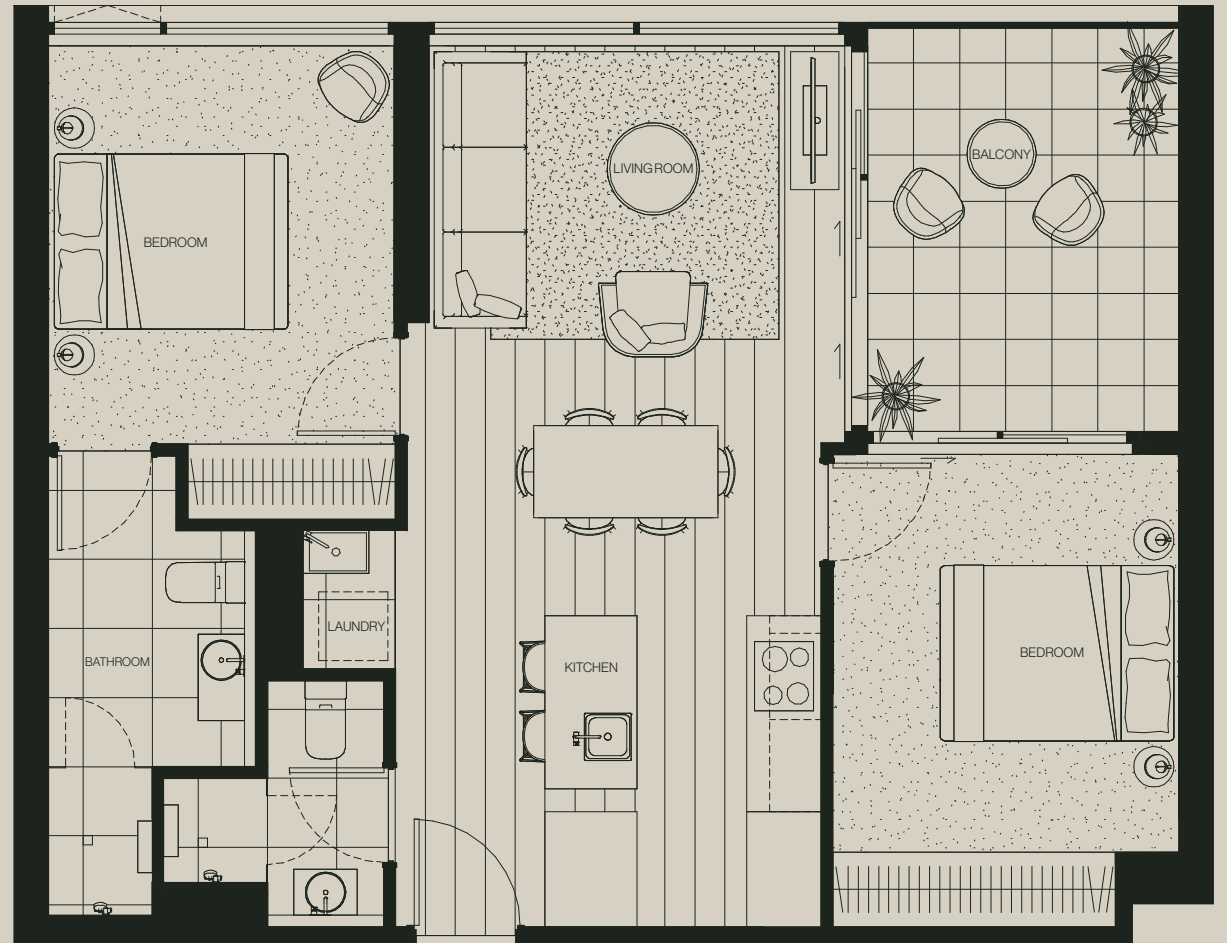
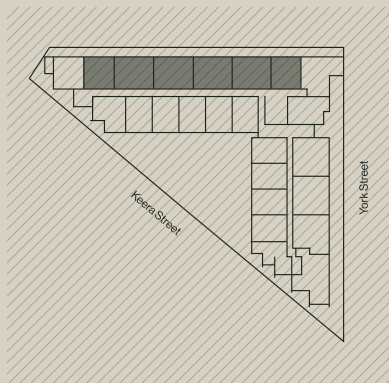


Apartment Type 2E

🛏️ 2 🚿 2 🚗 1

Total Size: 70.6m²
Open Space: 8m²
Layout: Type 2E
Type: 2 Bed

N
⊕ Scale 1:50



Motif Floorplate



Scale 1:200

1 Bedroom Apartments

2 Bedroom Apartments



Around the Corner

Sitting in close proximity to the Little Malop Street precinct, you're spoiled for choice between dining and drinks, window shopping and beach strolling. Because more is more is Motif.

MORNING

First things first, getting your step count up takes you down Bob McGovan Path along the bay. You'll walk past Western Beach where you'll overlook the boats while filling your lungs with that crisp morning sea air. Following the scent of morning coffee, the closest to home is Box Office Café, and you'll find plenty more delicious brunch options along Pakington Street just down the road.

NOON

Whether you're off to work or off for the day, there's plenty to get around. Westfield is home to just about every store you might need — think: T2, MECCA, Peter Jackson — and a well-curated food court to keep you going. Across the road on Malop Street, Market Square Shopping Centre continues the spree with JB Hi-Fi and EB Games. There's also Deakin's Waterfront Campus, if you're brushing up on your education.

NIGHT

Most weekend afternoons start with a dirty martini at Arborist, followed by the chef's menu at Felix — or Osteria Fiorenza for those who prefer the classics. Little Malop Street comes alive in the afternoon, so you'll likely hop around venues and find your own favourites soon. Just promise you'll have a nightcap poured by Meet Me at Mary's before returning home.



While You are Here

A UNESCO City of Design, Motif is built on Geelong's vibrant cultural fabric — and complementing it with sustainable, resilient, and inclusively built local communities.

The city's affinitive for clever creativity shines through in its diverse offering for artistic expression; Culminating in the new Geelong Arts Centre, Australia's largest regional hub, the redeveloped building on Little Malop Street now hosts multiple theatres, an atrium, and a range of great dining options to round out the night. To get around, and to get more out of life at Motif, discover all it has to offer.

Cafés, Restaurants & Bars

01. Born & Bread Bakehouse
02. 1915
03. Funk Botanical
04. Pavilion Café
05. Meet Me at Marys
06. Box Office Café
07. SODI
08. 63 Degrees
09. Tulip
10. BAAH LAH!
11. IGNI
12. Cartel Coffee
13. Sumi
14. Osteria Fiorenza
15. Arborist
16. ALMA
17. Felix
18. Recess Bar & Eats
19. Union Street Cellar
20. Cellar Door
21. Sailors Rest
22. Barking Dog
23. Pholklore
24. Telegraph Hotel
25. King of The Castle Café
26. Pollo Rotisserie
27. Pizza Bar
28. Geelong West Social Club
29. Geelong Fresh Foods
30. Bao Place

Employment & Education

31. St Mary's Primary School
32. St John's Lutheran School
33. Geelong Grammar School — Bostock Campus
34. The Geelong College
35. Kardinia International College
36. Sacred Heart College
37. St Joseph's College Geelong
38. Deakin University — Waterfront Campus
39. Federal Mills
40. Barwon Water
41. Barwon Health
42. Wurriki Nyal Civic Precinct
43. Worksafe
44. Cotton ON
45. NDIS

Shopping

46. Bottles and Barrels
47. Woolworths Geelong West "Pakington Strand"
48. Winepress Wine
49. Westfield
50. Ampersand
51. Frankie Says Relax
52. GOOSE
53. The Wildwood Collective
54. BOOM Gallery
55. Kitos Living By Design

Entertainment / Lifestyle

56. West End Precinct
57. The Pier Geelong / Cunningham Pier
58. Geelong Arts Centre
59. Geelong Gallery
60. MOPA
61. Geelong Library
62. Geelong Golf Club
63. GMHBA Stadium
64. Royal Geelong Yacht Club

Transport

65. Geelong Station
66. North Geelong Station
67. Spirit of Tasmania
68. Geelong to Melbourne Ferry

Outdoor Spaces

69. Rippleside Park
70. Botanic Gardens
71. Eastern Beach
72. Eastern Beach Kids Pool
73. Johnstone Park
74. Western Beach

Healthcare

75. St John of God Geelong Hospital
76. University Hospital Geelong
77. Epworth Geelong



-  Outdoor Spaces
-  Ocean
-  Suburbs
-  Beach
-  Trainline
-  Roads





DM PROPERTY is a residential developer specialised in quality homes that feel exactly that. Well versed across apartment and townhouse projects as well as land subdivisions, the company is committed to creating positive environmental and social impact by reinvesting in local communities.

Strength in numbers.

- \$300M+ portfolio.
- 20+ years' combined experience.
- Track record of projects delivered.
- Strong network of financial backing organisations.

Rix — Officer

- \$16m project
- 41 lot residential subdivision

Uptown — Shepparton North

- \$50m end value
- 170 lot residential subdivision

Early — Sandringham

- \$45m end value
- 35 townhouses

Colac

- \$100m end value
- 320 lot residential subdivision

DM PROPERTY Involvement

Port Lane — Port Melbourne

- \$150m end-value
- 122 townhouses

Yarrville Place — Yarrville

- \$90m end value
- 98 townhouses

Canvas — Brunswick

- \$60m end value
- 62 apartments and 1500m² of commercial space across 10 levels and a 3 level basement



ICON KAJIMA creates and contributes to projects of enduring value. Tapping into the unique combination of developer and financier expertise, the company is owned by the Japanese publicly listed Kajima Corporation, one of the world's largest property and construction companies, and delivers exceptional property solutions.

Strength in numbers.

- \$25B annual revenue.
- Market capitalisation exceeding \$11 billion.
- 180 years of international operations and collaboration.
- Providing financial strength and technological backing to support project visions and investment aspirations.

33 Manning — Milton

Home to 131 residential apartments designed by Rothelowman.

627 Chapel Street — South Yarra

A commercial office building over 24 levels.

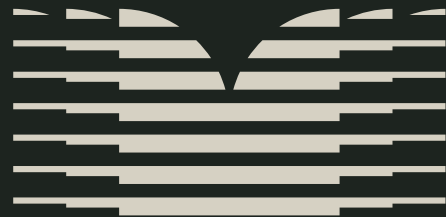
600 Church Street — Cremorne

An eight-level commercial office building plus retail development.

88 Langridge Street — Collingwood

This eight-level commercial office building is complete in its final form.





MOTIF 3220

DISCLAIMER:

All details provided in this brochure are indicative only, for information purposes only and subject to change without notice. No warranty or promise is made by the sales brochure vendors or its representatives, its related entities, consultants or their agents, either expressly or impliedly. Purchasers and interested parties must rely on their own enquiries and obtain their own independent advice in relation to the information and representation contained in this brochure and its accuracy. Photographs and artist impressions are for presentation purposes only and are indicative only. They should not be relied upon as an accurate representation of the final product. Specification may change at any time. All interested parties must refer to the contract of sale as to what is included in the sale of the property.