

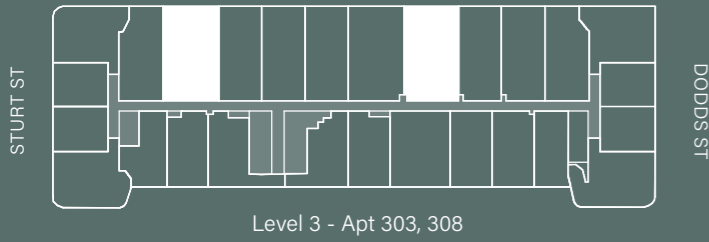
ARIA

MELBOURNE

Type 2B

ARIA COLLECTION:
2 BED 2 BATH

Internal 80.4m² | External 36.6m²
Total Area 117.0m²



evolve
DEVELOPMENT

Disclaimer: Whilst we endeavour to ensure the contents of this document are correct at the time of printing, the information it contains is to be used as a guide only. This document was completed prior to the completion of final design, engineering and construction of the project, therefore design, engineering, dimensions, fittings and specifications are subject to change. All areas are provided in accordance with the Method of Measurement for Residential Property provided by the Property Council of Australia.



- | | | | | | |
|---|---------|----|-------------------|-----|--------------------|
| P | PANTRY | W | WASHING MACHINE | SB | SWITCH BOARD |
| F | FRIDGE | AC | AIR-CON CONDENSER | NBN | NBN CONNECTION BOX |
| S | STORAGE | | | | |

