

*Reading Avenue Residence*

3D SCHEMATIC





*Reading Avenue Residence*

CONCEPT

2

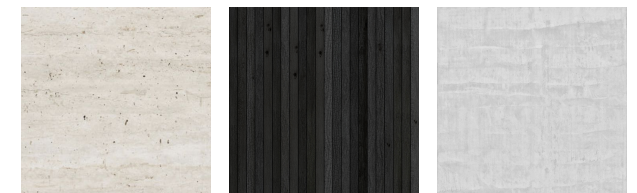
6



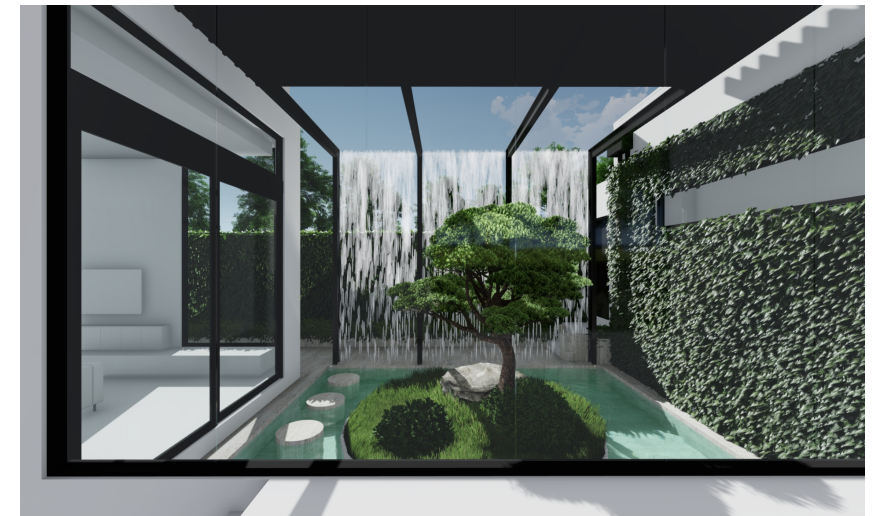
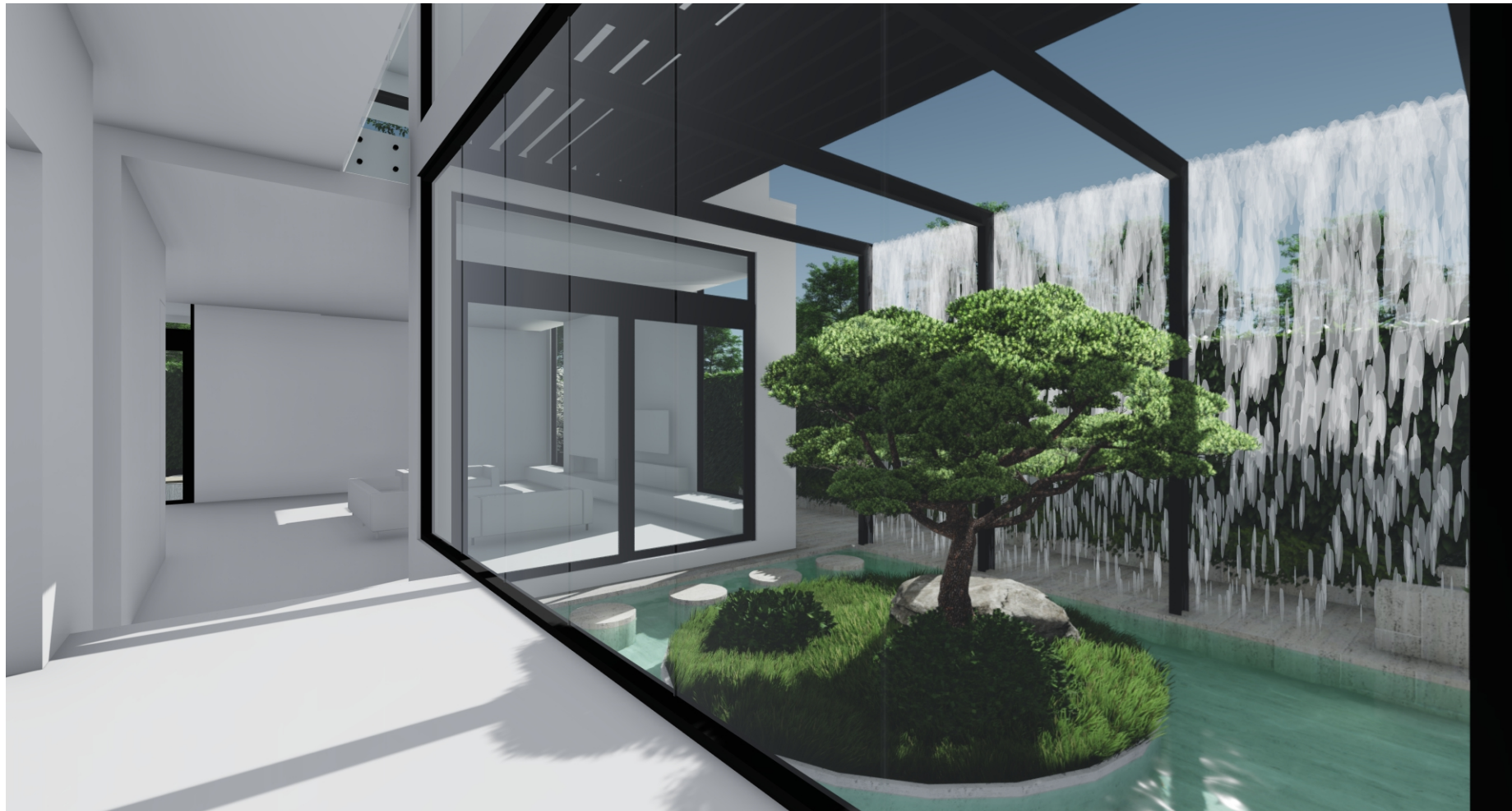


View across the front of the house from the eastern boundary.

Large uplit feature trees are placed within the front garden to provide scale and compliment the overall height of the home. Planting is green, textural and bold. All hard edges are softened with planting where possible.







The view from inside to the external courtyard.

The external courtyard is filled with a travertine pond that has water cascading down mesh sheets or rods. This provides a stunning outlook from inside the home. When the sliding door to the courtyard is open, you are able to immerse yourself within the space with access via floating steppers.



A feature garden is placed within the pond to provide calming greenery to the space. The planting will provide beautiful light and shadow play against the water and walls.

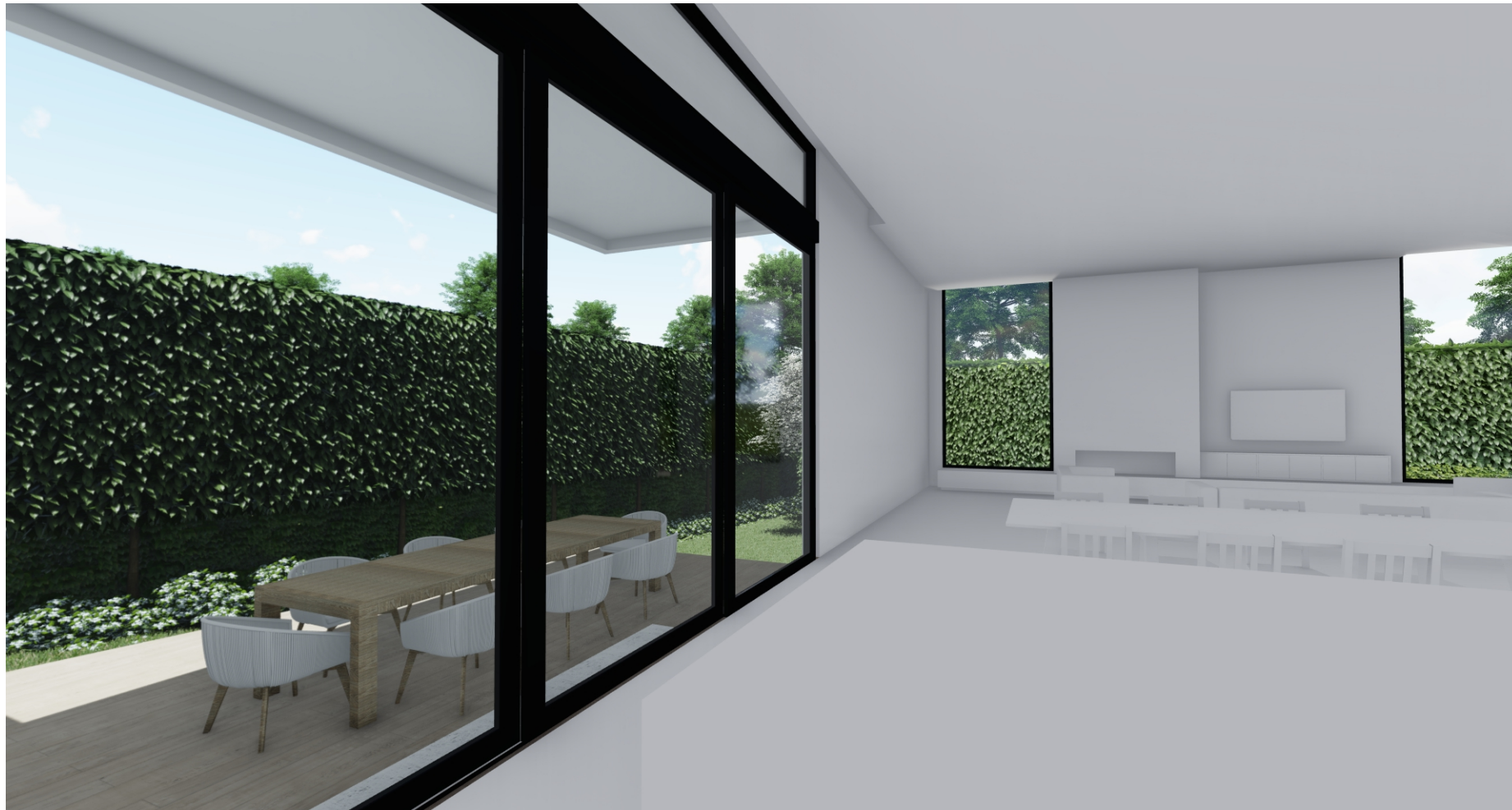




The upstairs area has five oversized planters filled with textured greenery. These planters will be irrigated and drainage provided. The area will provide a relaxing space to capture the sun.







A feature tree is planted in an oversized planter for visual interest from the deck and within the home.

The view from the kitchen to the rear and side garden. Pleached trees are underplanted with a floral evergreen plant. The boundary fence is covered with a creeper which will provide additional texture and movement within the space.



The integrated BBQ is undercover for cooking in all weather. A travertine path runs from the deck along the eastern side of the house, past the laundry to the front of the property.