

THE  
PENTHOUSE

COLLINS HOUSE

5601 / 464 COLLINS STREET, MELBOURNE



*Secluded behind mirrored doors,  
lies a penthouse like no other.*

---

Embodying quintessential Melbourne, it is bold and theatrical, refined and artisanal, threaded with European influence. Its captivating design sets it apart, exhibiting a quality of artistry and materiality that is unparalleled.

The Penthouse sits proudly on the top two levels of the prestigious Collins House building in Melbourne's CBD, its exceptional interiors complemented by uninterrupted views to Collins Street, Port Phillip Bay and the Dandenong Ranges.

Exclusive, rare, luxurious, it rivals the grandeur of Manhattan's finest apartments. We invite you behind the mirror, to discover one of Melbourne's most thrilling penthouse offerings.



*Chapter One*

# MELBOURNE

¶





*The cultural and event capital.*

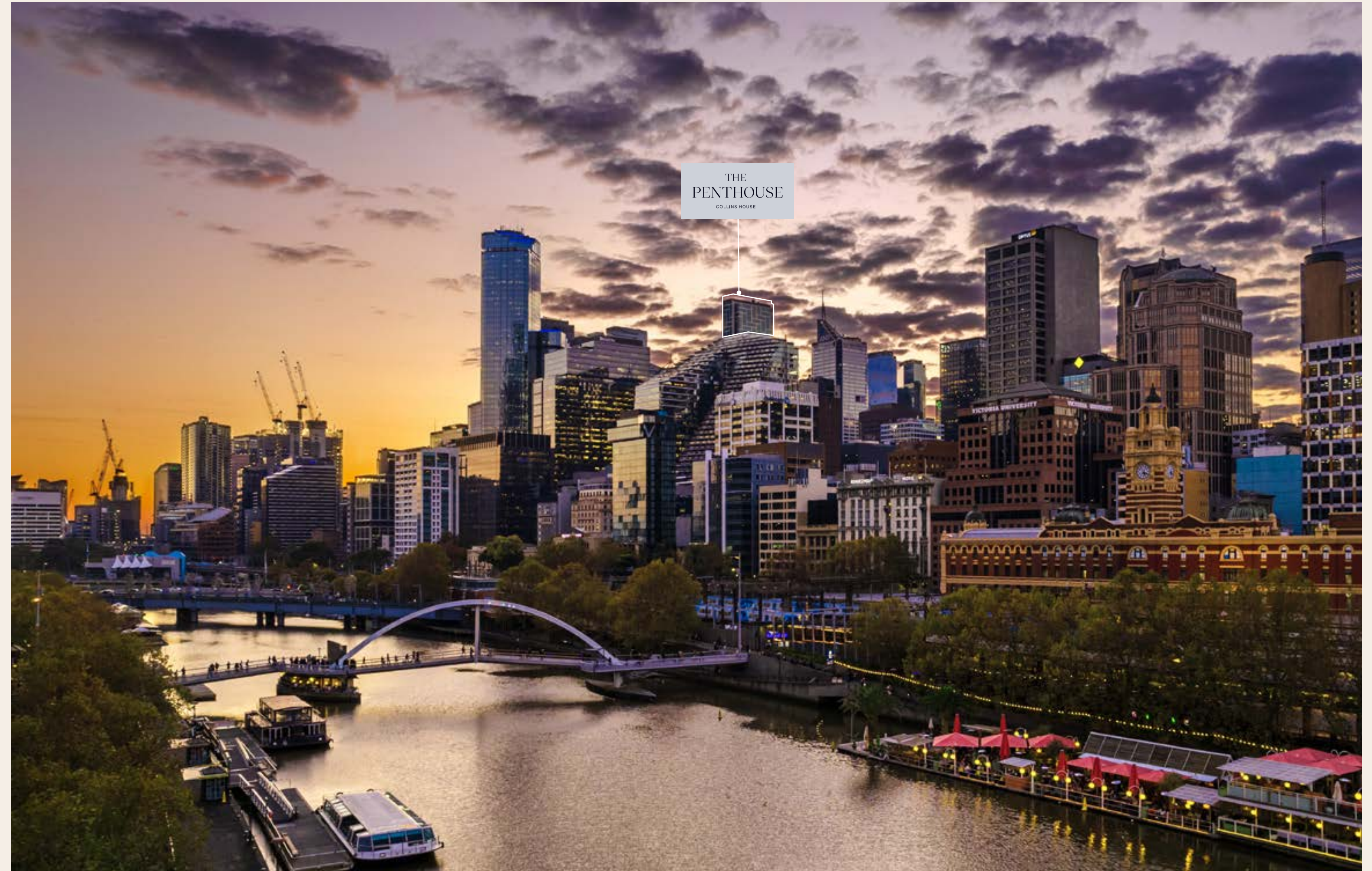
---

Melbourne is celebrated for the richness of its culture, with a broad range of world-class experiences ranging from theatre, museums, galleries and live music, to sporting and fashion events, dining, bars and a thriving coffee scene.

The city plays host to some of the most important sporting, fashion and cultural events in the country. Whether it's the

Australian Open, Formula 1 Grand Prix or Melbourne Cup, or the Melbourne International Fashion, Comedy or Film Festivals, there is always an exciting event to be part of in this truly global city.





*Linked to a global network.*

---

Seamlessly transfer to anywhere in the world with Melbourne's well-connected transport infrastructure. Melbourne International Airport is only a 30-minute drive and offers frequent and efficient flight routes to global destinations.

Alternatively, travel privately and exclusively via private jet to Essendon Fields Airport and take a helicopter transfer to the city, touching down in style at the Melbourne City Helipad, less than 10 minutes away from Collins House by car.









*A life-defining address.*

---

Collins Street is the premier destination in the world's most liveable city. The tree-lined avenue is renowned for its luxury retailers, first-class dining and entertainment, key office headquarters, and iconic arcades branching into Little Collins Street and Flinders Lane.

Collins House's prominent position on Collins Street offers unrivalled access to the Melbourne CBD, with the best of the city's restaurants, theatres, boutiques and events on its doorstep. A truly extraordinary lifestyle awaits.



THE PENTHOUSE AT COLLINS HOUSE

World-Class City Living

ARTS & ENTERTAINMENT

- 1. Crown Casino
- 2. Parliament House
- 3. Her Majesty's Theatre
- 4. The Princess Theatre
- 5. Old Treasury Building
- 6. Regent Theatre
- 7. Hamer Hall
- 8. National Gallery Victoria
- 9. Sidney Myer Music Bowl
- 10. Melbourne Convention & Exhibition Centre
- 11. Royal Exhibition Building
- 12. Melbourne Museum

SPORTS & LEISURE

- 13. Melbourne Cricket Ground
- 14. Margaret Court Arena
- 15. Rod Laver Arena
- 16. Melbourne & Olympic Park
- 17. AAMI Park
- 18. Marvel Stadium
- 19. Flemington Racecourse
- 20. Albert Park Grand Prix Circuit

RETAIL

- 21. Queen Victoria Market
- 22. Melbourne Central Shopping
- 23. Emporium
- 24. QV
- 25. Collins Street Luxury Retail
- 26. Bourke Street Mall
- 27. St Collins Lane
- 28. Block Arcade

HOSPITALITY

- 29. City Wine Shop
- 30. Siglo
- 31. Florentino
- 32. San Telmo
- 33. Longrain
- 34. Ombra
- 35. Cumulus Inc.
- 36. Garden State Hotel
- 37. Chin Chin
- 38. Coda
- 39. Lucy Liu Kitchen & Bar
- 40. MoVida
- 41. Kisume
- 42. Lune Croissanterie
- 43. Supernormal
- 44. Degraes Street Hospitality
- 45. Hardware Lane Restaurants
- 46. Vue De Monde & Lui Bar
- 47. China Town
- 48. Flower Drum Restaurant

ACCESSIBILITY

- 49. Melbourne International Airport
- 50. Melbourne Heliport
- 51. Moorabbin Airport
- 52. Essendon Airport
- 53. Avalon Airport





*Chapter Two*

# COLLINS HOUSE

¶



*Traditional grandeur reimaged.*

---

Superbly designed by the leading architectural practice of Bates Smart, and constructed by the renowned property company Hickory, every aspect of Collins House reflects the grandeur and grace of this discerning city location.

The thin 60-storey tower is a masterpiece of modern engineering and design. It features a steel structure within its walls, which had to be painstakingly hand-clad with thousands of layers by two artisans working full-time for six months.

The tower's design artfully incorporates the grand heritage façade of Melbourne's historic Maker's Mark building, with stunning original Art Nouveau detailing. The sophistication continues as the sleek contemporary tower emerges from the small site footprint, piercing the Melbourne skyline.







*Opulent city living.*

---

Since its nineteenth-century gold rush heyday, Melbourne has been home to several finely appointed members-only clubs. Collins House takes that tradition to a new level with the sumptuous St James Club on Level 27, home to a beautifully crafted private dining and lounge, state-of-the-art gym, outdoor deck and bar, and sweeping views over the streets of Melbourne and beyond.

Collins Terrace on Level 3 is a private indoor and outdoor space with picturesque views over the trees, trams and bustling street scene below. This is a place to meet friends or associates in the plush open-air lounge and dining areas, with a gourmet kitchen and spacious lounge just inside.



*“It is a sophisticated reflection of the traditional grandeur of the Collins Street address and celebrates its unparalleled views across Melbourne..”*

Anthea Leyden - Associate Director  
COX ARCHITECTURE

*View from level 57*

---





*Chapter Three*

# THE PENTHOUSE

¶





*Authentic Melbourne luxury.*

---

The Penthouse sprawls across 480m<sup>2</sup> of levels 56 and 57, the two top levels of Collins House, celebrating the city and the remarkable architecture of its address.

Its truly bespoke design, from the highly regarded Cox Architecture in collaboration with interior designer George Livissianis, conjures a mood of theatre and glamour that unfolds from the very entrance and is distinctly Melbourne.

Each level has a distinct atmosphere: the lower level is moody and luxurious, with bluestone flooring, exposed concrete, concrete plaster, steel accents and a unique Italian feature marble, while the upper level is a rejuvenating oasis, enveloped floor to ceiling, inside and out, with a rare ocean travertine.





*“Collins House is the third thinnest tower on Earth. By placing the structure in the walls, we created a single-span space in the living area, the largest of any apartment in Australia.”*

Michael Argyrou - CEO  
HICKORY



*A grand homecoming.*

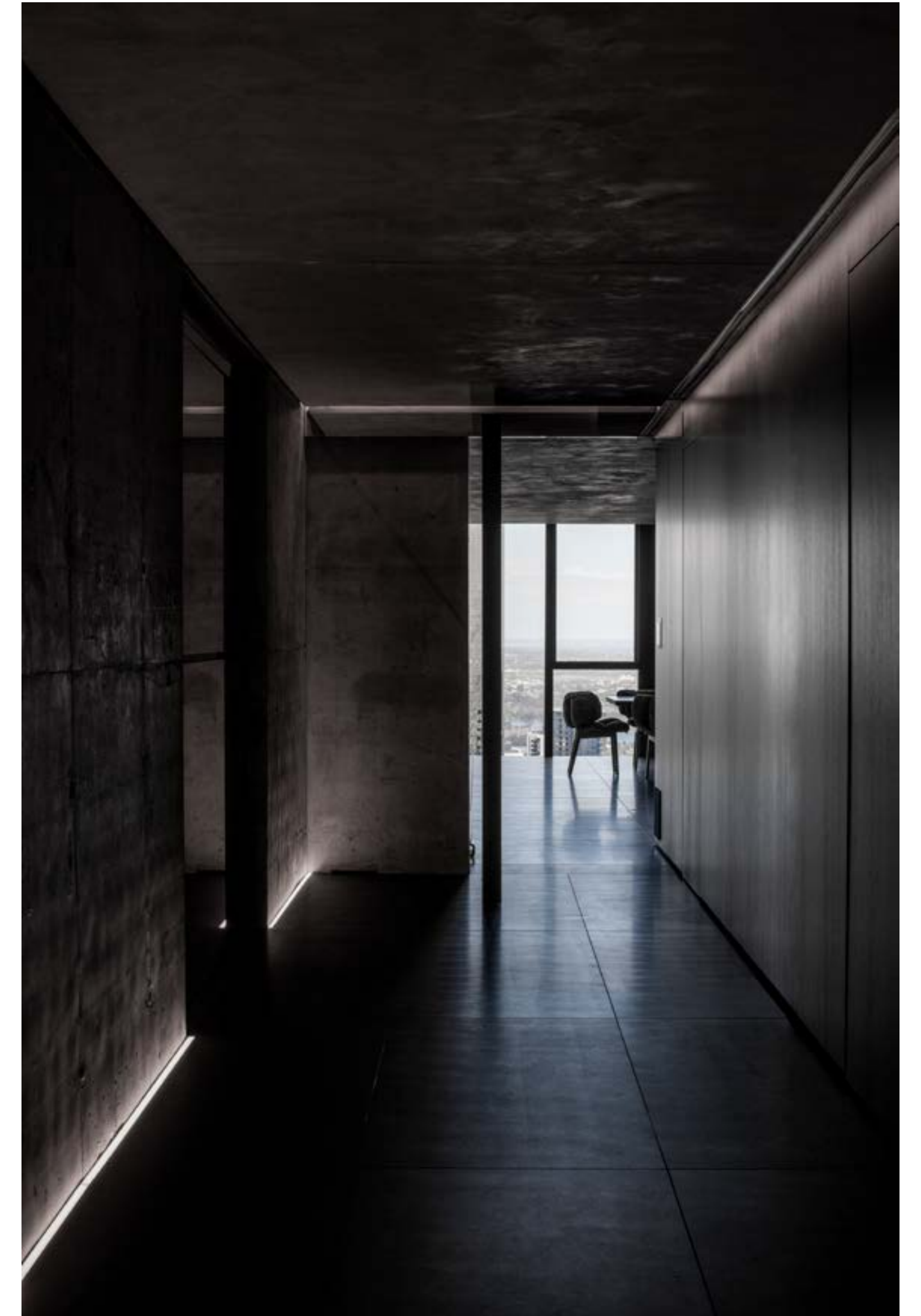
---

Arriving at The Penthouse is to journey from the outside world to the one within.

The visual experiences evokes a sense of mystique from the moment you enter the moody, low-lit timber-clad lobby, where automated sliding doors reveal the striking sculptural staircase and breathtaking city views beyond.

The next transition is through a generous, mirrored corridor, reminiscent of the hidden entrances throughout Melbourne's laneways. Three pivoting mirrored doors in this cross corridor create an infinity effect, acting as moveable walls that open to reveal the master and guest suites, and the living and entertainment zone.

Simply swing through a door and leave the world behind.







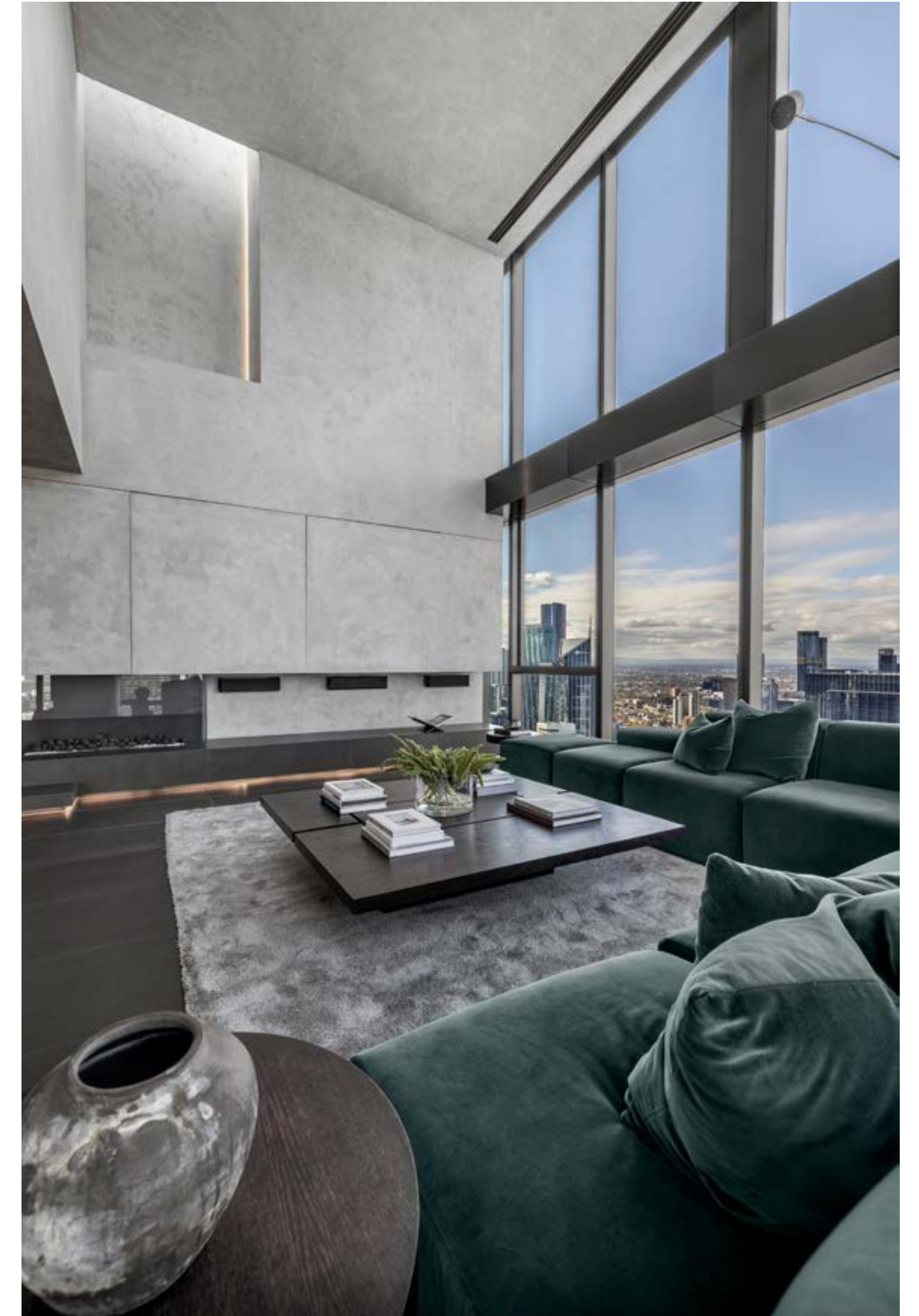


*Soaring heights.*

---

A double-height void in the living space draws the gaze skyward, with full windows flooding the room with natural light and panoramic views. Energy-efficient vertical LED lighting accentuates height, where a sculptural skylight in the corner complements the dynamic composition.

Integrated audio visual, a gas fireplace and soft furnishings add an effortless comfort to the awe-inspiring space.











*Beautiful forms.*

From unforgettable dinner parties and romantic nights in, to the simple pleasures of a morning coffee, the kitchen is central to life's memorable moments.

The sprawling space is anchored by a 5.5-metre island bench – a monolithic piece of artistry honed from Rochelle Grey marble sourced from Italy. The marble is accompanied by designer Italian tapware and Japan black timber veneer joinery, with retractable doors integrating everything from the Gaggenau appliances and refrigerator to inset bars and cooktop spaces. When closed, the timber transforms into a dark seamless backdrop, retaining the penthouse's minimal elegance.























*Everyday indulgence.*

---

The elegance continues in the master bathroom, an inspiring sanctuary boasting rejuvenating views of the cityscape. A Pibamarmi stone bathtub, crafted and carved in Italy, is the hero, offering a soothing respite from the demands of the outside world. Bespoke details from stone vanity wash basins to heated towel hooks and flooring elevate the tranquil luxury of this space.













*Effortless integration.*

---

First-class home automation allows you full control at the touch of a button. All lighting and audio-visual technology is integrated, with pre-set 'scenes' allowing you to set your ideal mood, morning through night.

The wine collector will appreciate the inclusion of a state-of-the-art, climate-controlled wine cellar secluded behind timber joinery, so your favourite drops are always at hand.









*Refined retreat.*

---

Ascend the sculptural staircase and be greeted by a sea of ocean travertine. The exquisite natural stone lines the floors and walls of the upper level, its light tones juxtaposed against the moodier tones below.

With a focus on wellness, this level is composed of a second retreat area, complete with integrated TV and gas fireplace, the third bedroom with ensuite and walk-in robes, and a spectacular outdoor terrace.







*A terrace in the sky.*

---

The outdoor terrace resides on level 57, and the breathtaking sight of the city from this height, experienced in the open air, is a once-in-a-lifetime offering.

It is the ultimate Melbourne asset, complete with hot tub and outdoor BBQ unit. Entertain friends, have a romantic night in, or simply soak up those million-dollar views.







*“Its architecture is timeless,  
its view is irreplaceable. I can’t  
recall any penthouse we’ve  
built like this in our 30 years  
of building in Melbourne.”*

Michael Argyrou - CEO  
HICKORY





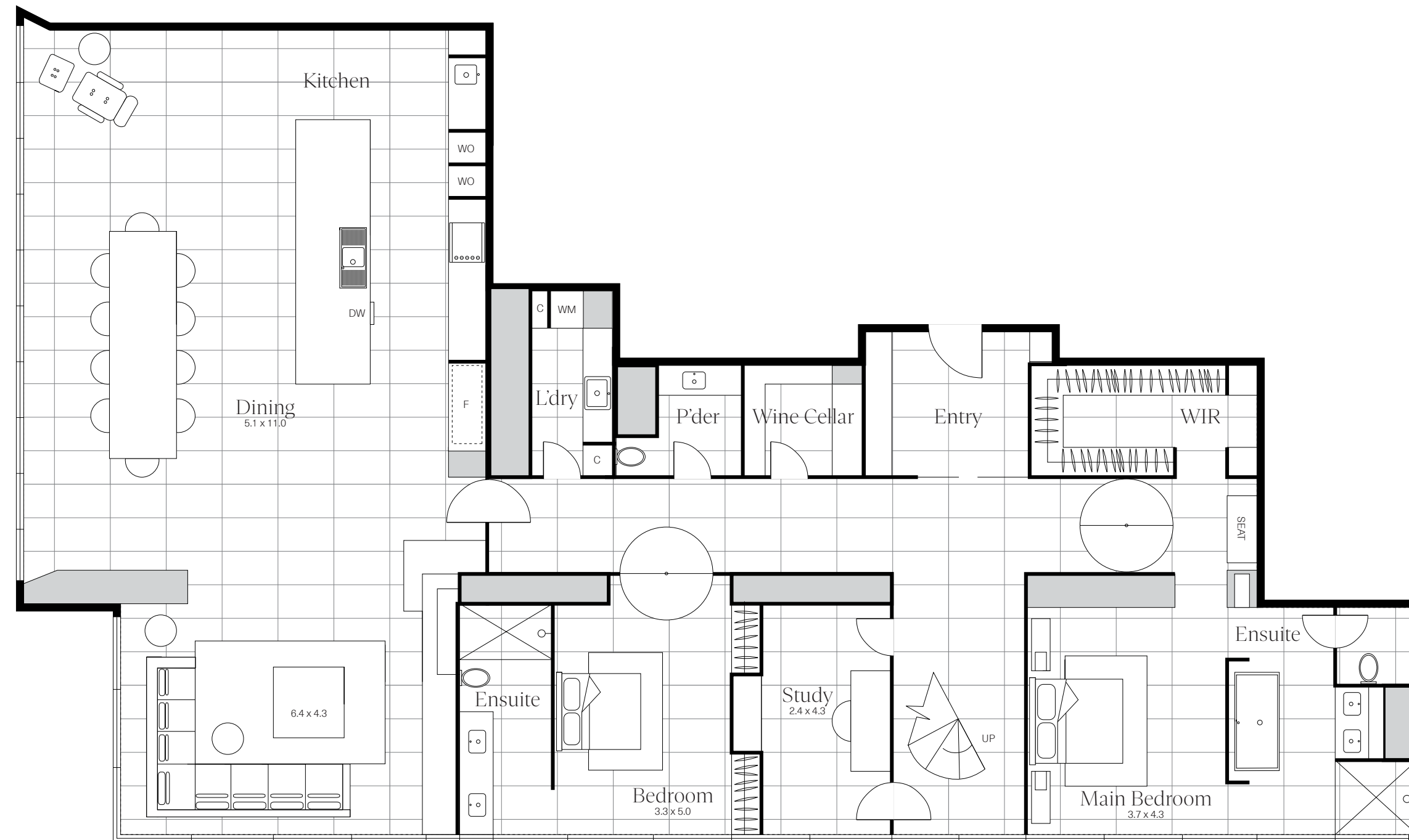




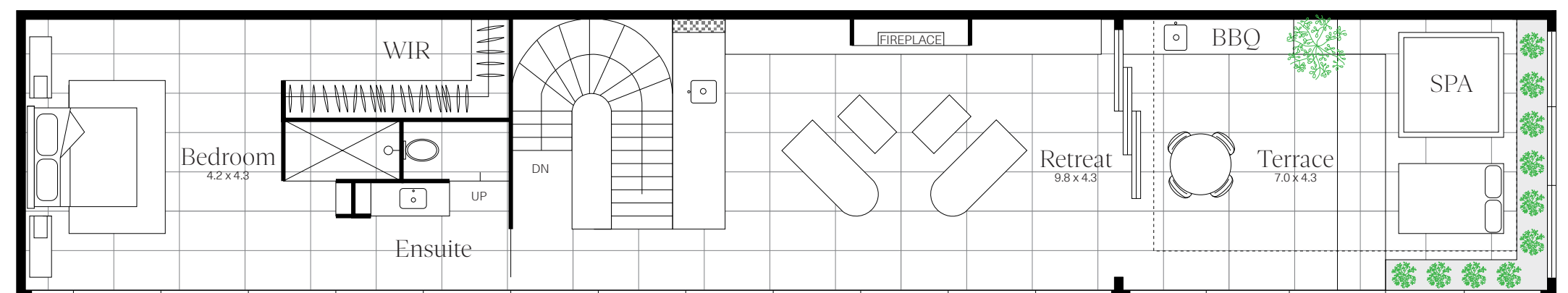




Lower Level



Upper Level



*The Penthouse Floorplan*

- 3 Bedroom suites
- 3 Bathrooms
- 1 Powder room
- 1 Study
- 4 Parking spaces

Total area: 480m<sup>2</sup>





*A Shared Vision*

---

*Cox*

**ARCHITECTURE & INTERIOR DESIGN**

Cox Architecture has a proud history of carefully conceived and crafted projects delivered globally across a broad range of scales and typologies. Architecture should enrich the cities and lives of those within them, so an acute awareness of community, context and history expressed through clear and honest solutions has always been at the core of the Cox ethos.

*Hickory*

**CONSTRUCTION PARTNER**

For over 30 years Hickory has continually invested in researching and developing digital platforms, people, and products to advance the capabilities of the built environment across Melbourne and Sydney. As a result, they've become one of the most diverse property companies in Australia, with businesses across the construction, development, manufacturing, and data centre segments.





*A Shared Vision*

---

*George Livissianis*

**INTERIOR DESIGN**

Founded in 2007, George Livissianis Interior Architecture creates spaces for people, for products, and for experience. Their interiors aim to create feeling, shaping space, influencing emotions and responses. They see things in their simplest form and seek to find simplicity through well-crafted spaces.

*Colliers*

**SALES AGENTS**

The Colliers Residential Victoria team have been marketing and selling off-the-plan residences for over 20 years. With an unrivalled reputation for success, they specialise in the sell-out of large-scale residential super towers, high-end luxury residences, inner suburban apartments and townhouse developments, and outer suburban master planned communities.

Their team has the most comprehensive knowledge of the Victorian residential property market and the experience to deliver outstanding project marketing solutions and sales results time and time again.





**5601 / 464 COLLINS STREET, MELBOURNE**

Disclaimer The information given herein is made by Colliers and affiliated companies in their best judgement, in good faith and as far as possible based on data or sources which are believed to be reliable. COPYRIGHT Colliers. All rights reserved. No part of this work may be reproduced or copied in any form or by any means (graphic, electronic or mechanical, including photocopying, recording taping, or information retrieval systems) without the written permission of Colliers. Colliers Residential Ground Floor, 367 Collins Street Melbourne. VIC 3000. Phone: 9940 7222