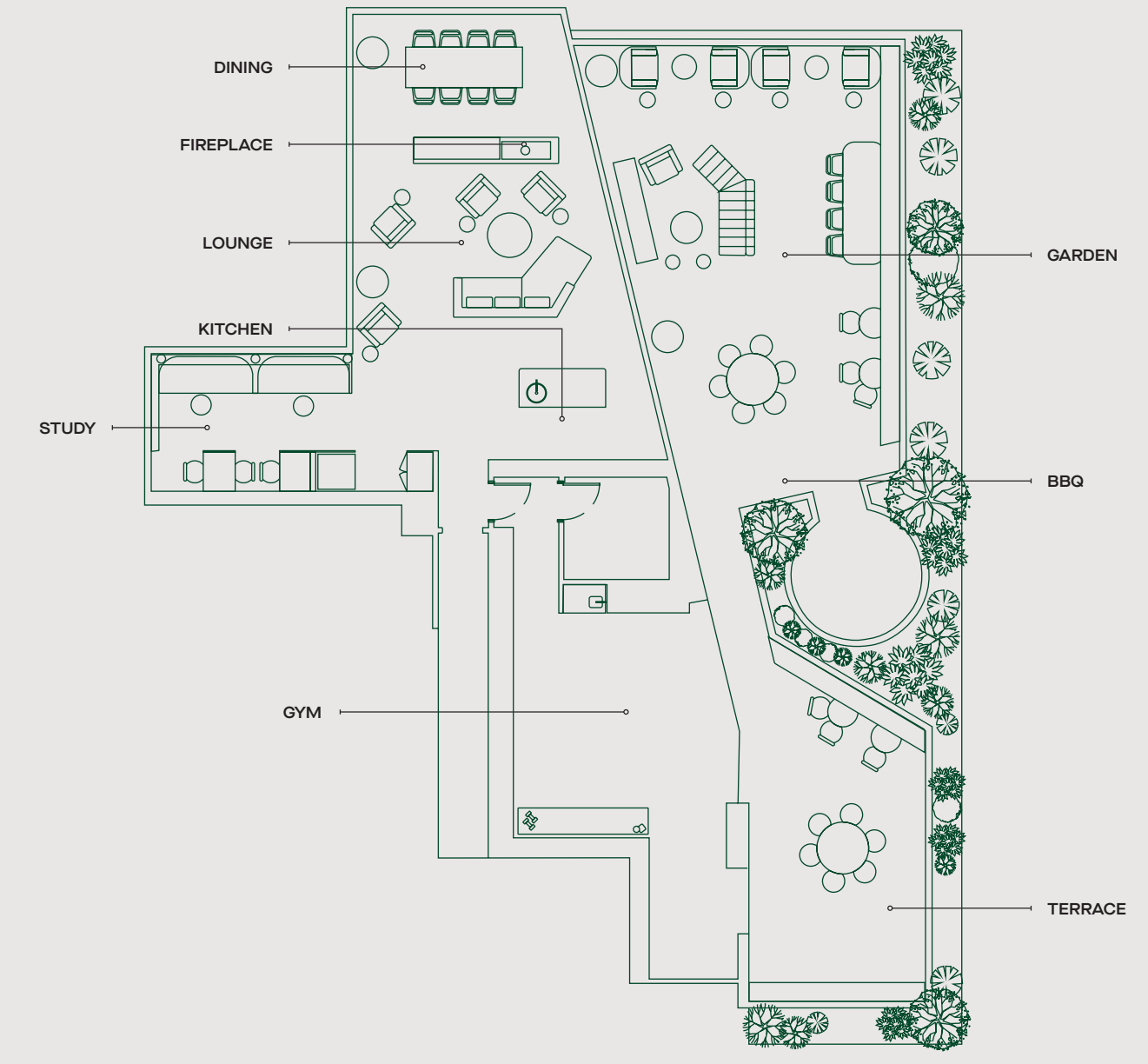


AMENITY
HOTEL-LIKE
AMENITY



VERDÉ

85 COVENTRY ST
A DAY IN THE LIFE



ABUNDANCE & EASE

EASY MORNINGS



01 Concierge Desk
02 Residents Library
— Artist Impression

At Verde, mornings unfold effortlessly with every amenity within arm's reach catering to all desires. Begin your day with a freshly brewed coffee from the downstairs café. For those working or studying from home, transition seamlessly into your day-to-day within the co-working space, an elegant space designed to inspire creativity and foster productivity. Concierge staff on the ground floor await your instruction; they are available to assist

with appointments, deliveries, collections, and more to alleviate challenging logistics. For effortless travel, Verde offers immediate access to trams and trains, allowing for quick journeys to the CBD, South Yarra and South Melbourne. Furthermore, the Metro Tunnel, which is to be completed in 2025, includes five new underground stations, and a future metro rail link to Melbourne airport.

RELAX & REJUVENATE

AFTERNOON WELLNESS

01 Residents Lounge
— Artist Impression
02 Melbourne Recital Centre



The afternoon is a time to decompress then rejuvenate. Immerse in Melbourne's best attractions and connect to nature with a peaceful stroll. Just moments away you'll find Albert Park Lake, The Tan, Royal Botanical Gardens and Port Melbourne. Walk along tree-lined paths and the Yarra River and lose yourself in the tranquility offered by these verdant grounds.

After your walk, ascend to level 1, a sanctuary boasting state-of-the-art gym equipment designed to elevate your afternoon activity. Here, amidst an ambiance of refinement, enjoy some light weights, stretches or meditation nurturing both body and soul.

ARTS PRECINCT

EVENING ENTERTAINMENT



01 Melbourne Recital Centre
02 Ground Floor Restaurant
— Artist Impression

If you're wanting to enjoy a quiet night-in, Verdes elegant residents lounge has been designed as an extension of your home. With a gas fireplace, an eight-seater table and lounge, you can host an intimate dinner party or simply meet, relax and unwind with friends and family. During warmer nights, step out onto the private terrace garden with barbecue facilities and luxury furnishings where you can enjoy an outdoor dinner in your own tranquil retreat. If you don't feel like cooking, there's no need to venture far. Simply head

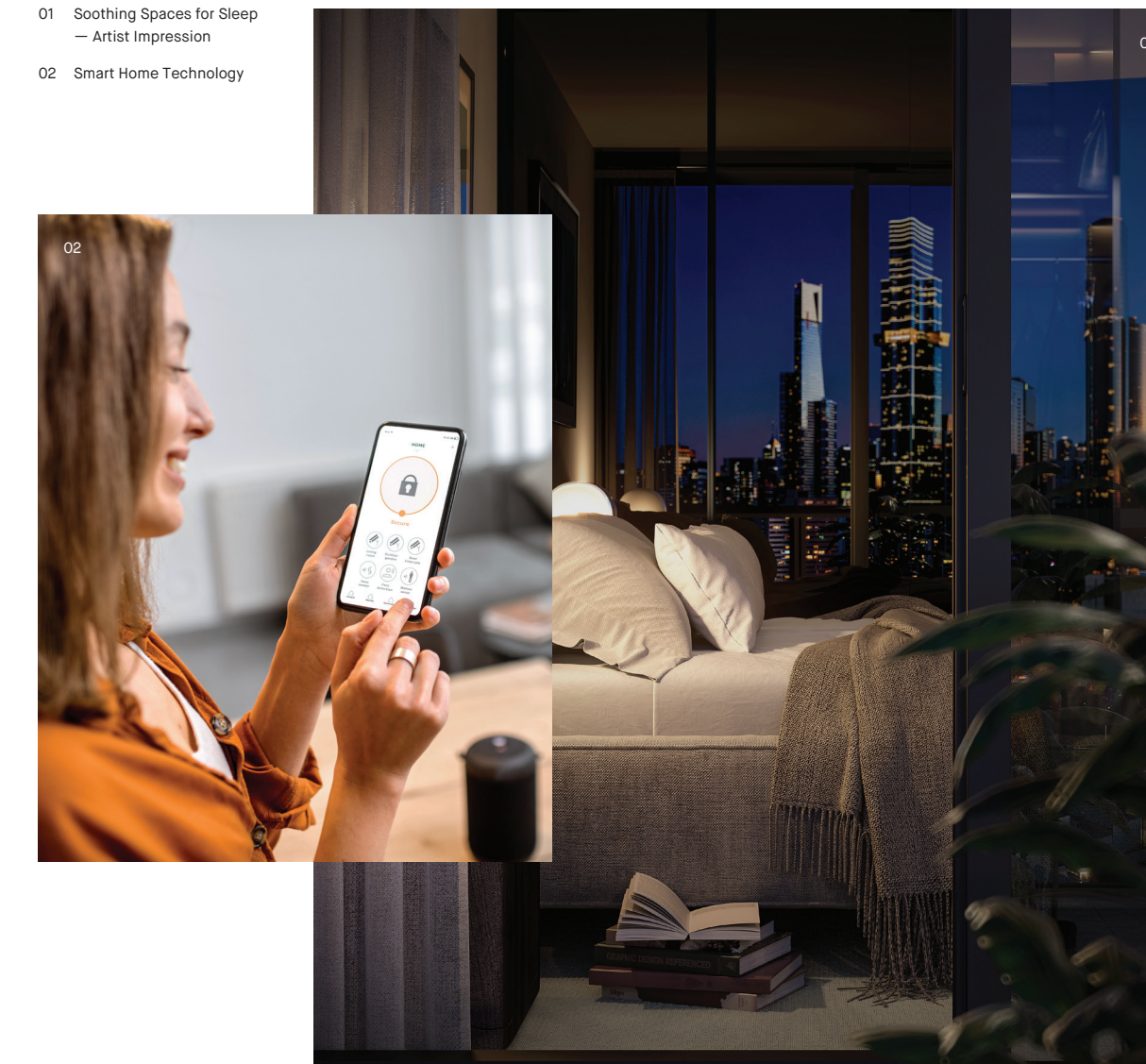
downstairs to the ground floor restaurant and enjoy a meal without any hassle.

If you're looking to venture out, Verde is located in the prestigious art precinct. Within walking distance, you'll find galleries, theatres and exhibitions. Start the night by visiting the NGV followed by a delicious dinner along Southbank. Across the Yarra River, Melbourne reveals a rich fabric of hidden laneways and iconic streets offering a multitude of options to see, discover and indulge.

SMART HOME

NIGHT-TIME LUXURIES

01 Soothing Spaces for Sleep
— Artist Impression
02 Smart Home Technology



An integrated Smart Home system* places every convenience at the fingertips of each resident. As the evening draws to an end, it's all about ease of living. When it's time to sleep, residents can turn off the lights, adjust the room temperature and set schedules for the following day, all at the touch of a button. This programmable electricity usage contributes to greater energy savings.

- 01 Device control: Smart App to control the lights, power and TVs
- 02 Scene control: Welcome Home / Goodbye button for when residents leave or return home. Simply touch one button on the control / use remotely
- 03 Group control
- 04 Room control
- 05 Set timer
- 06 Set schedule

* Upgrade