

arco



Arco.

noun:

The beating heart
of Footscray's soul.

Pickett St, Footscray

Architecture Architettura...

Marvel as spectacular arches adorn Arco's frontage, setting the tone for the grandeur found inside. Every facet has been considered and catered for; resulting in high-end splendour unlike anything else on the market.





Elevating
to a new
benchmark...

Residents have access to their own private terraces and storage facilities, while each penthouse comes complete with private roof top spaces and garages.

A groundbreaking development which simultaneously pays homage to Footscray's history, all the while elevating it to a new benchmark in apartment living.

Arco takes the essence of Footscray, acknowledging its history, and catapults it to a sophisticated new level in apartment living.



Oversized,
luxurious living
zones. A secluded
sanctuary nestled
away from the
bustle of the vibrant
and cosmopolitan
surrounds.



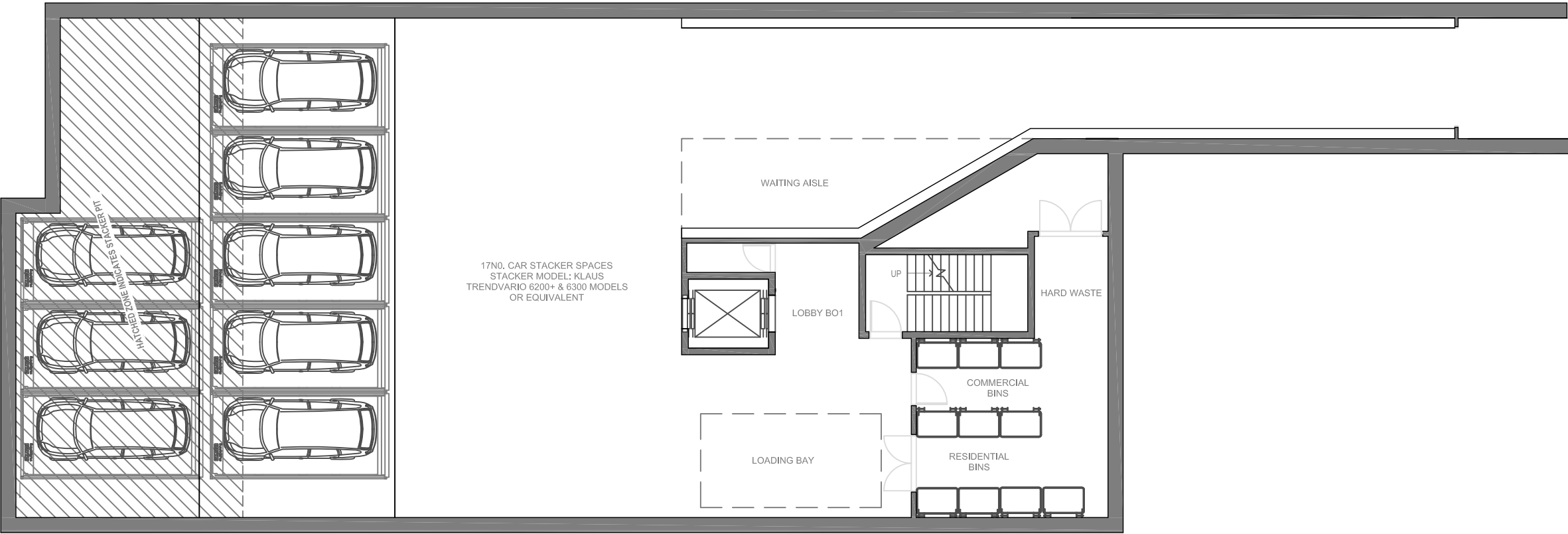


Floorplans



Basement

Basement
floorplan

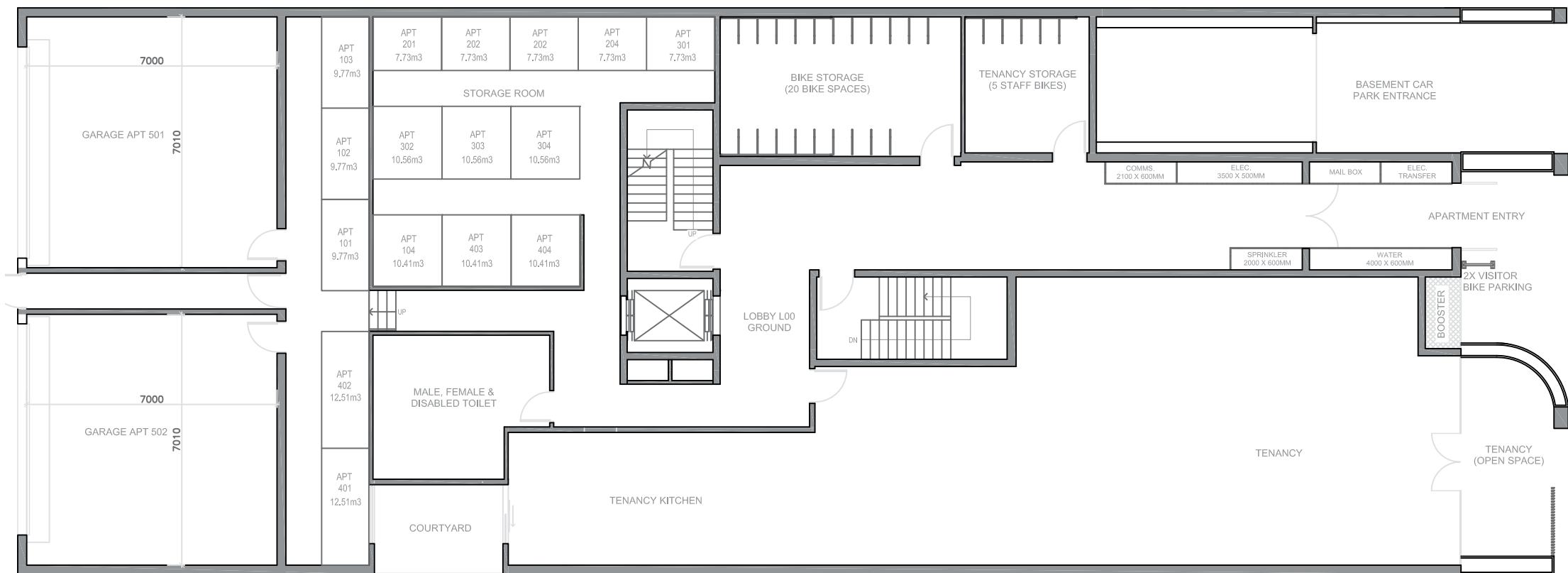


Scale 1:150



Ground floor

Ground floor
floorplan

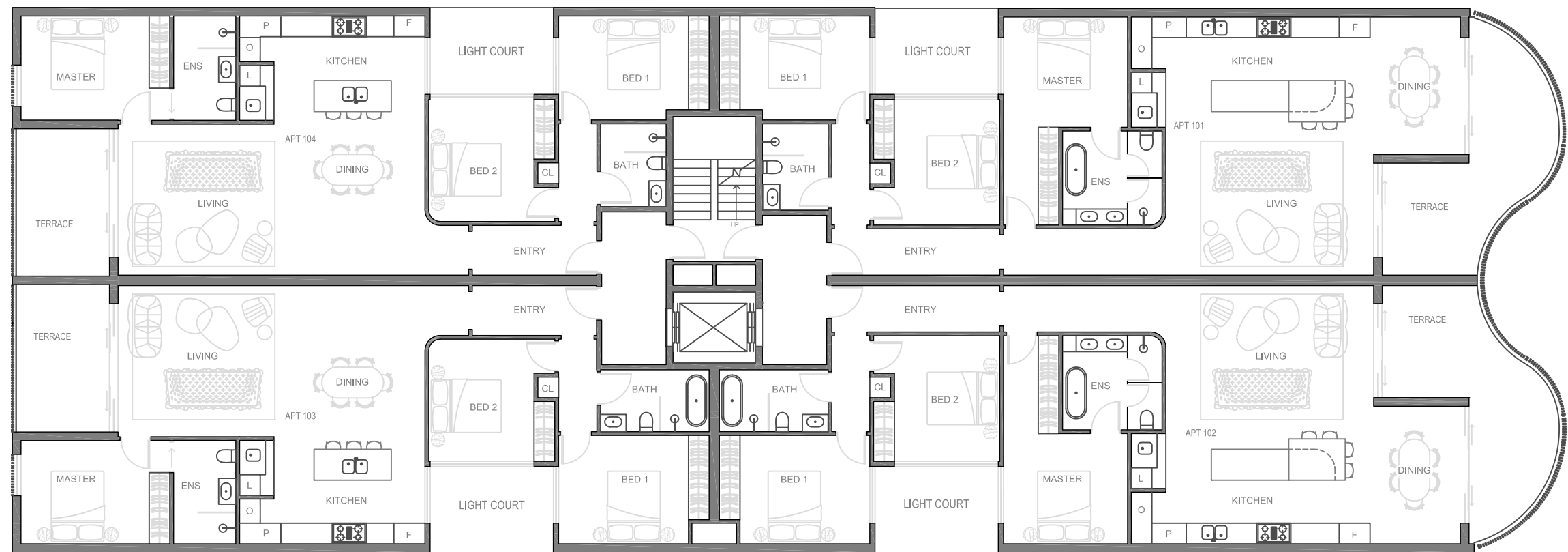


Scale 1:150



First floor

First floor
floorplan



Scale 1:150

Apartment 101 floorplan

3

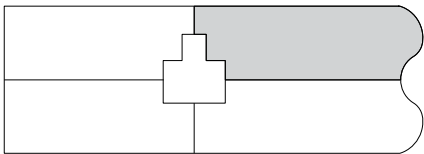
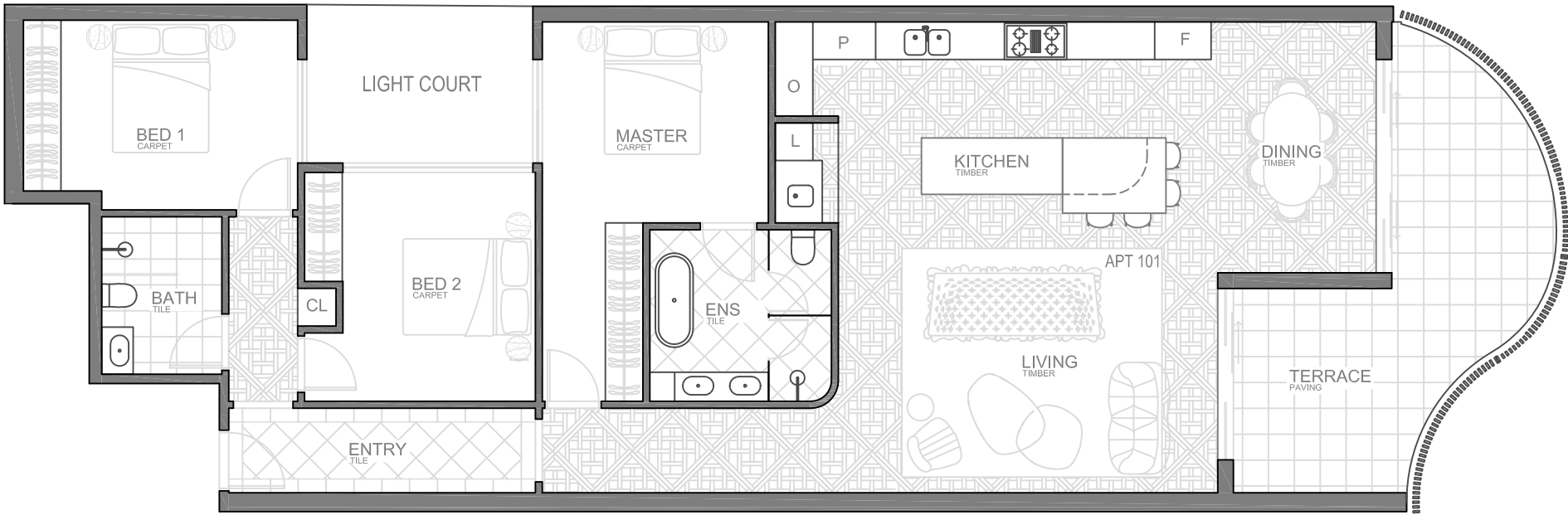
2

1

1

Internal area	146.2m ²
External area	20.7m ²
Total area	166.9m²

Note: Furnishings and hatches are artist impression only, refer to specification sheet for more details.



Scale 1:100

Apartment 102 floorplan

3

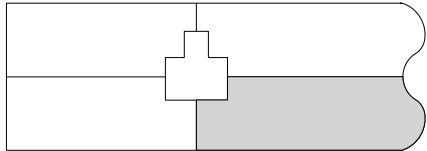
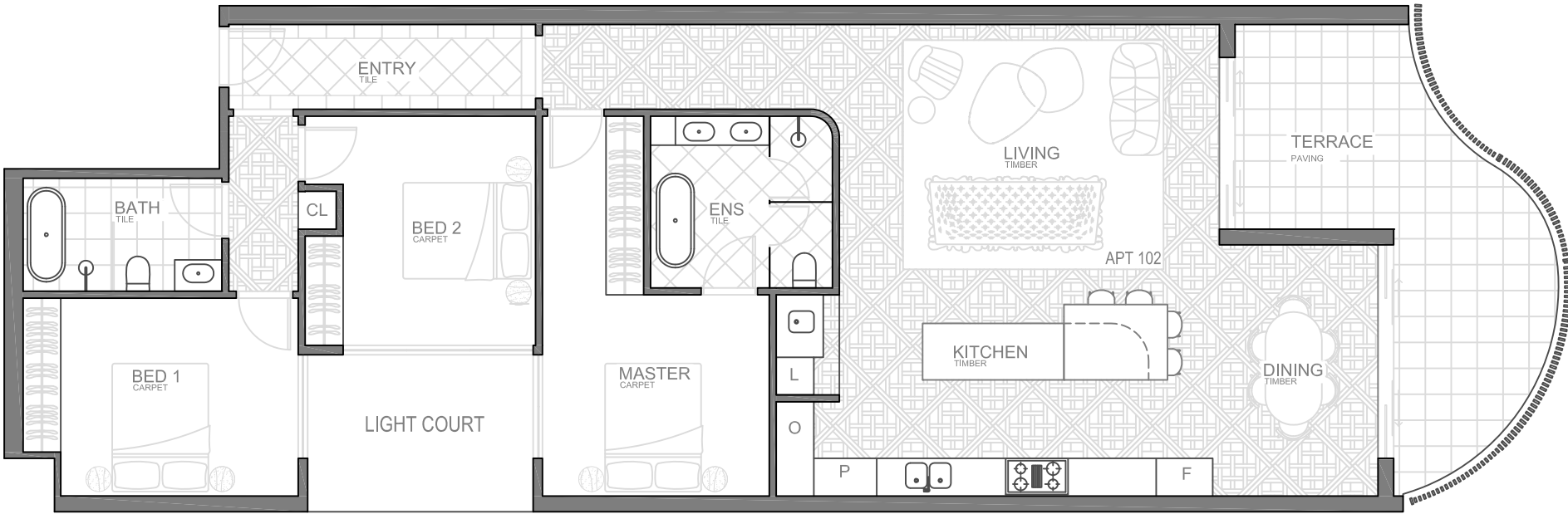
2

1

1

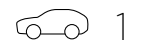
Internal area	147.1m ²
External area	20.7m ²
Total area	167.8m²

Note: Furnishings and hatches are artist impression only, refer to specification sheet for more details.



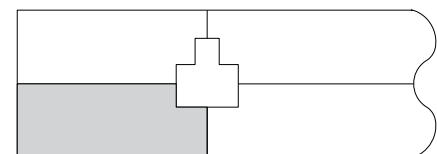
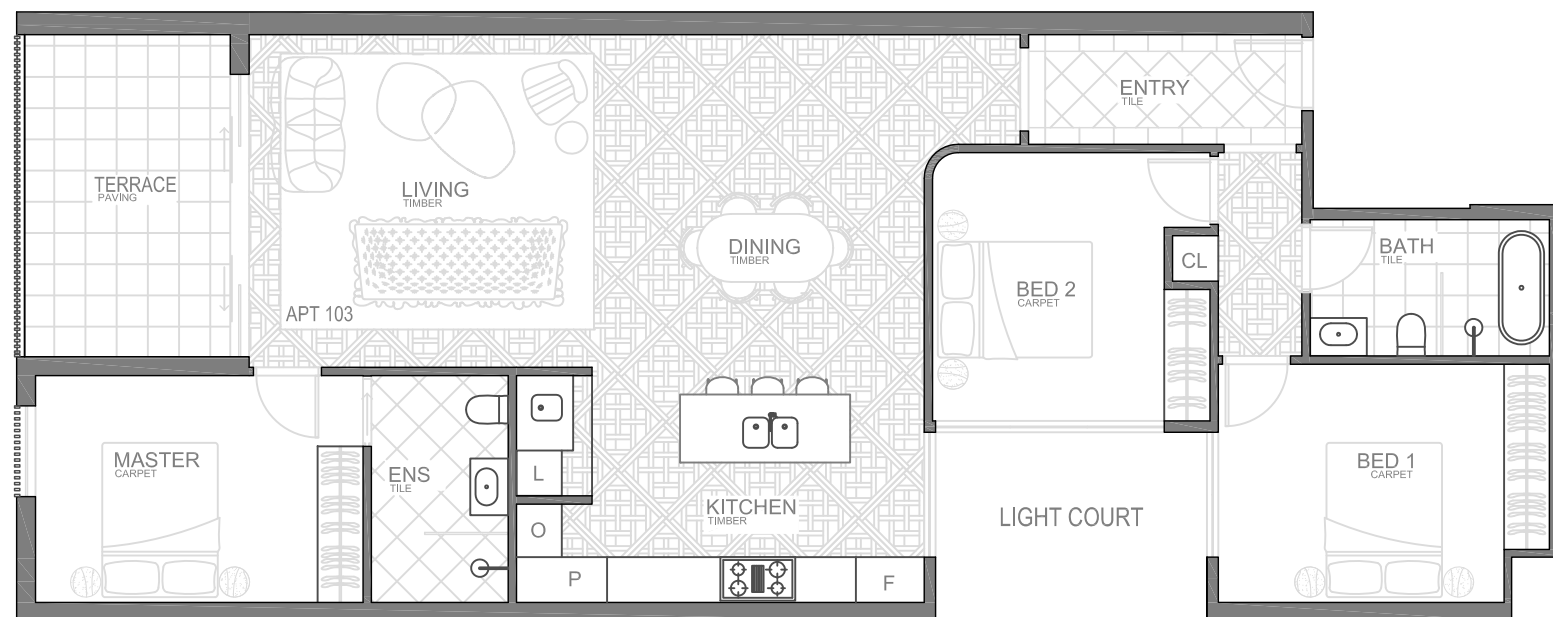
Scale 1:100

Apartment 103 floorplan



Internal area	131m ²
External area	11.6m ²
Total area	142.6m²

Note: Furnishings and hatches are artist impression only, refer to specification sheet for more details.



Scale 1:100

Apartment 104 floorplan

3

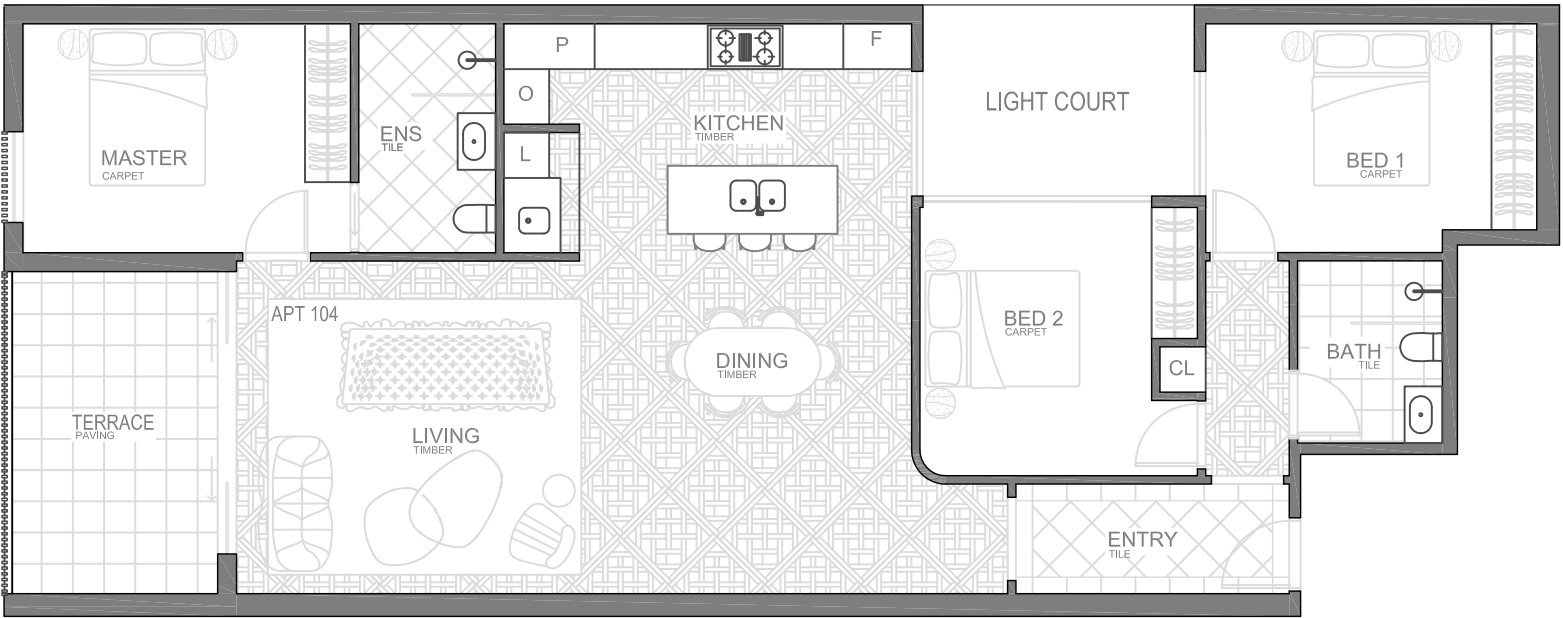
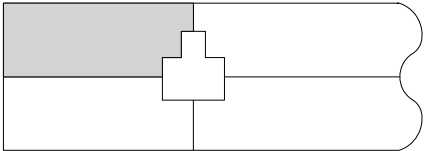
2

1

1

Internal area	129.9m ²
External area	11.6m ²
Total area	141.5m²

Note: Furnishings and hatches are artist impression only, refer to specification sheet for more details.

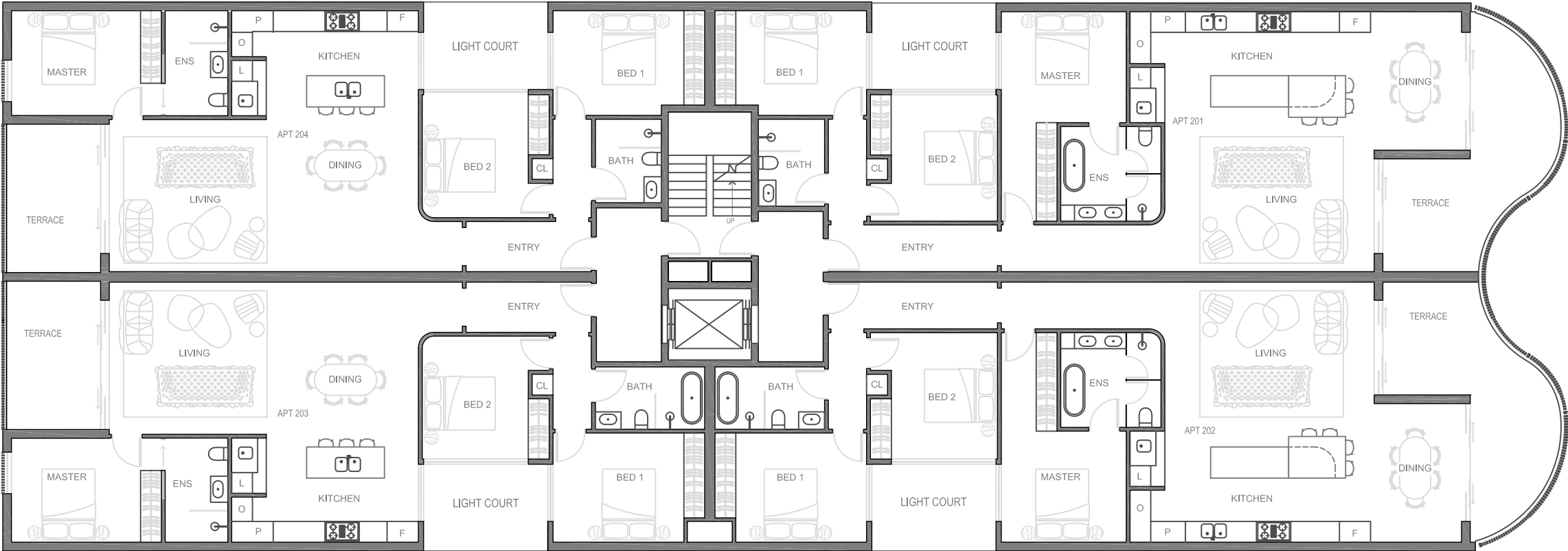


Scale 1:100



Second floor

Second floor
floorplan



Scale 1:150

Apartment 201 floorplan

3

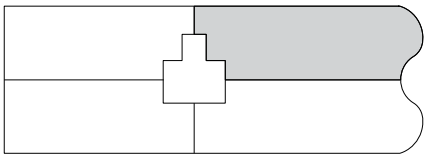
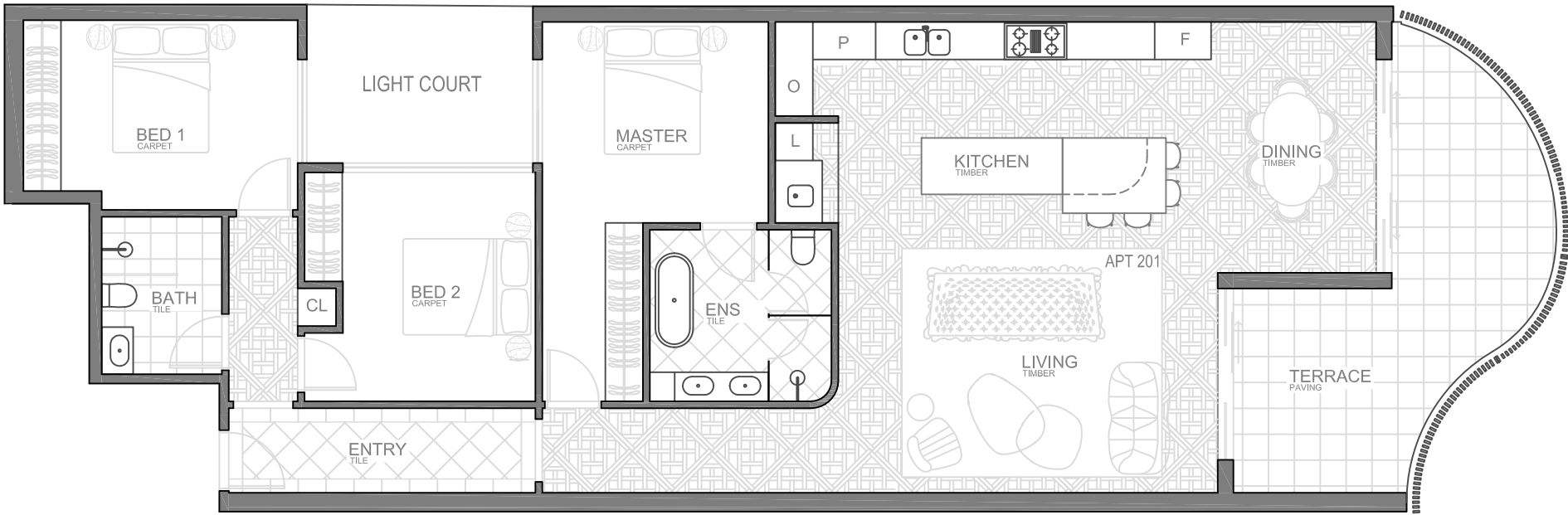
2

1

1

Internal area	147.0m ²
External area	20.7m ²
Total area	167.7m²

Note: Furnishings and hatches are artist impression only, refer to specification sheet for more details.



Scale 1:100

Apartment 202 floorplan

3

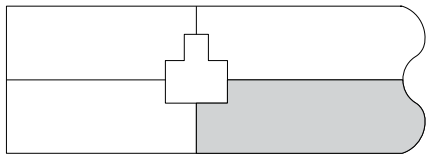
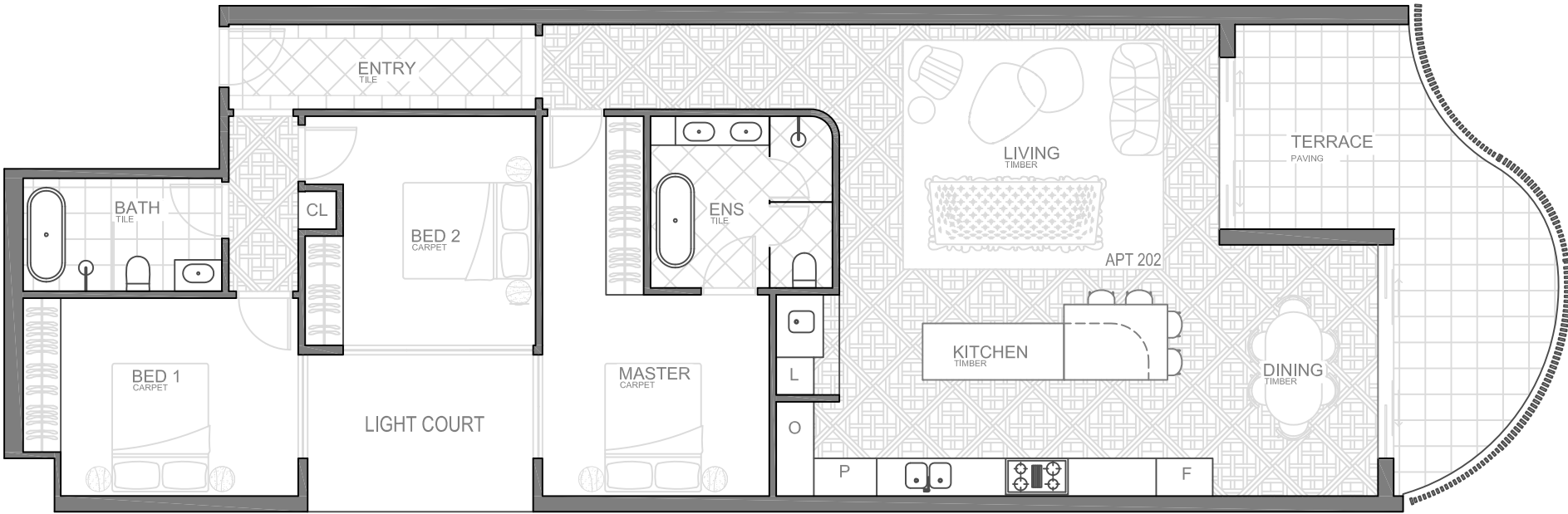
2

1

1

Internal area	145.8m ²
External area	20.7m ²
Total area	166.5m²

Note: Furnishings and hatches are artist impression only, refer to specification sheet for more details.



Scale 1:100

Apartment 203 floorplan

3

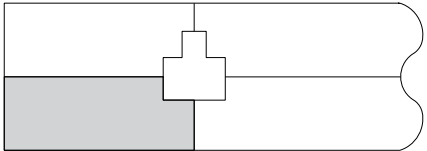
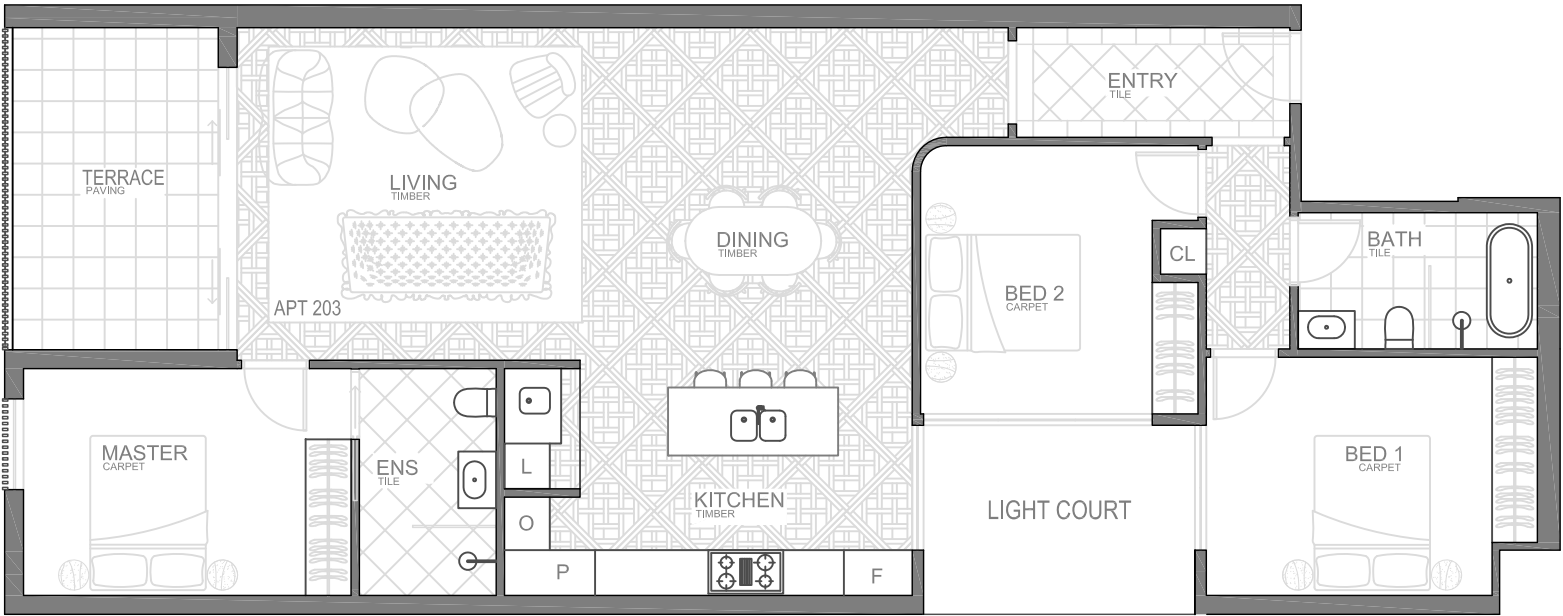
2

1

1

Internal area	131m ²
External area	11.6m ²
Total area	142.6m²

Note: Furnishings and hatches are artist impression only, refer to specification sheet for more details.



Scale 1:100

Apartment 204 floorplan

3

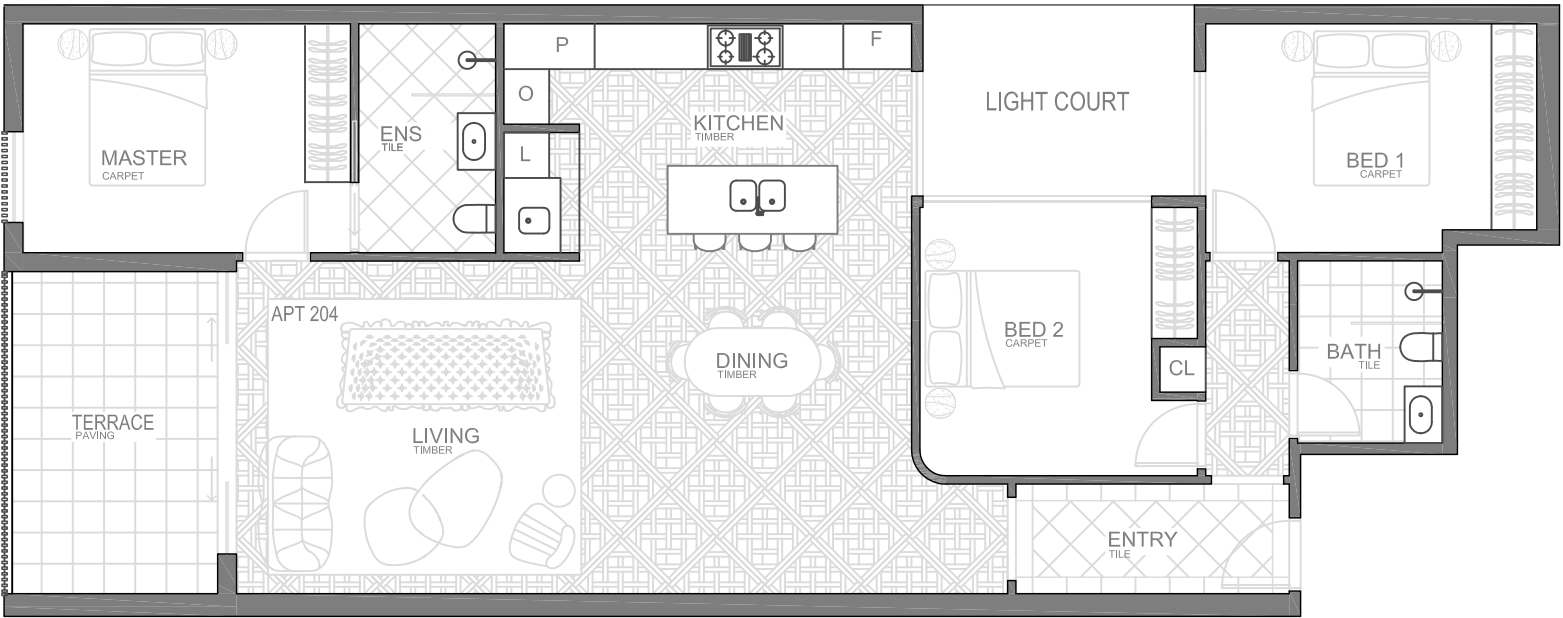
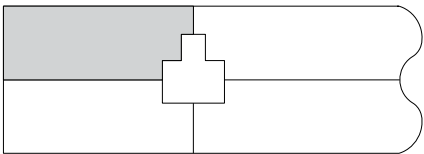
2

1

1

Internal area	129.5m ²
External area	11.6m ²
Total area	141.1 m²

Note: Furnishings and hatches are artist impression only, refer to specification sheet for more details.

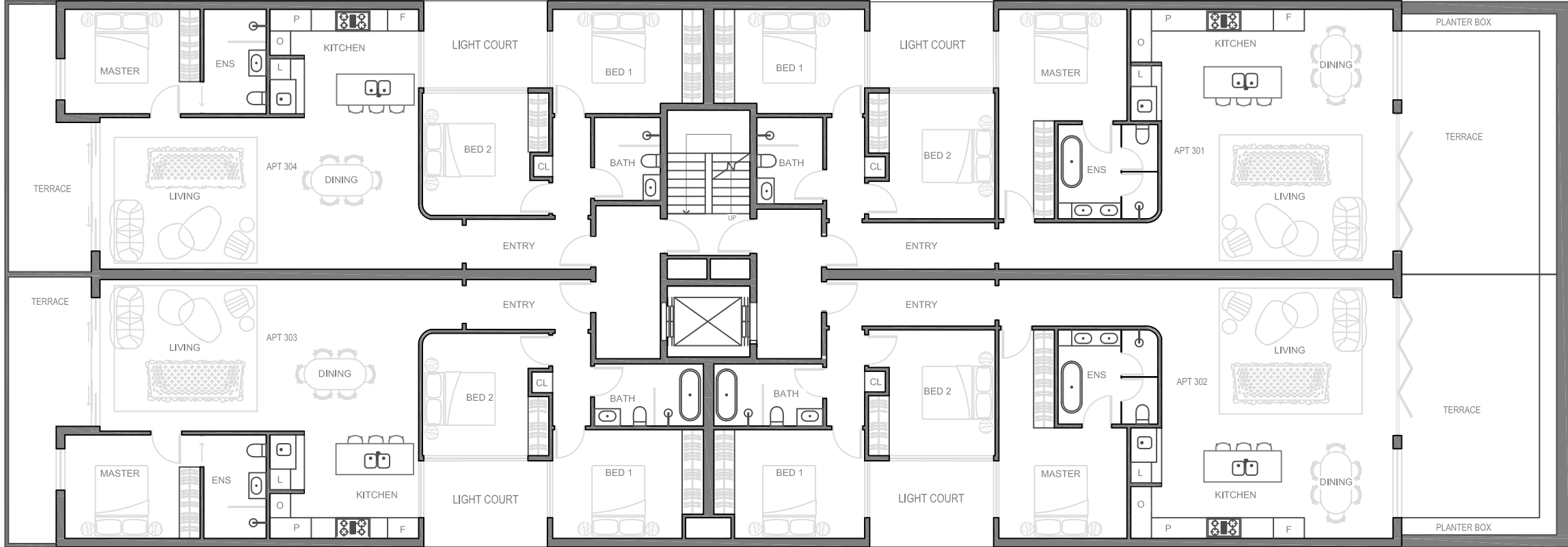


Scale 1:100



Third floor

Third floor
floorplan



Scale 1:150

Apartment 301 floorplan

3

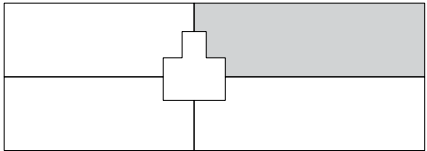
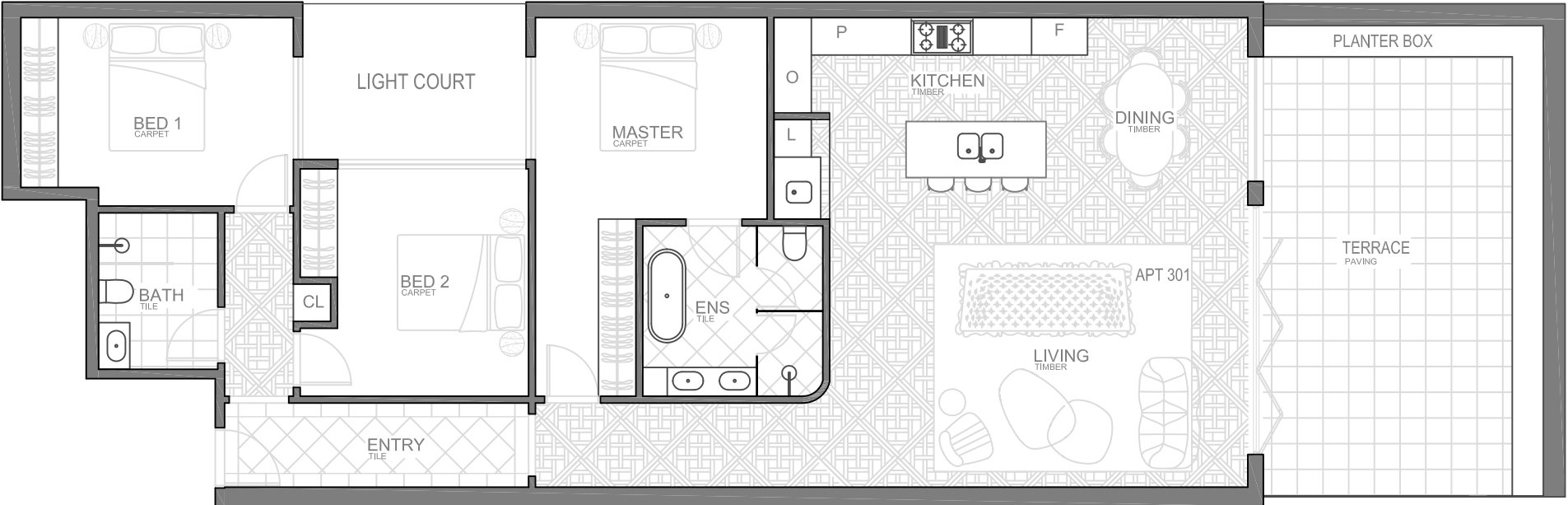
2

1

1

Internal area	140m ²
External area	38.3m ²
Total area	178.3m²

Note: Furnishings and hatches are artist impression only, refer to specification sheet for more details.



Scale 1:100

Apartment 302 floorplan

3

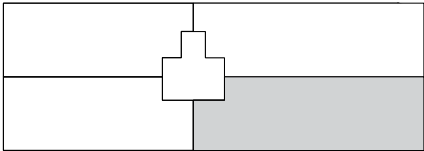
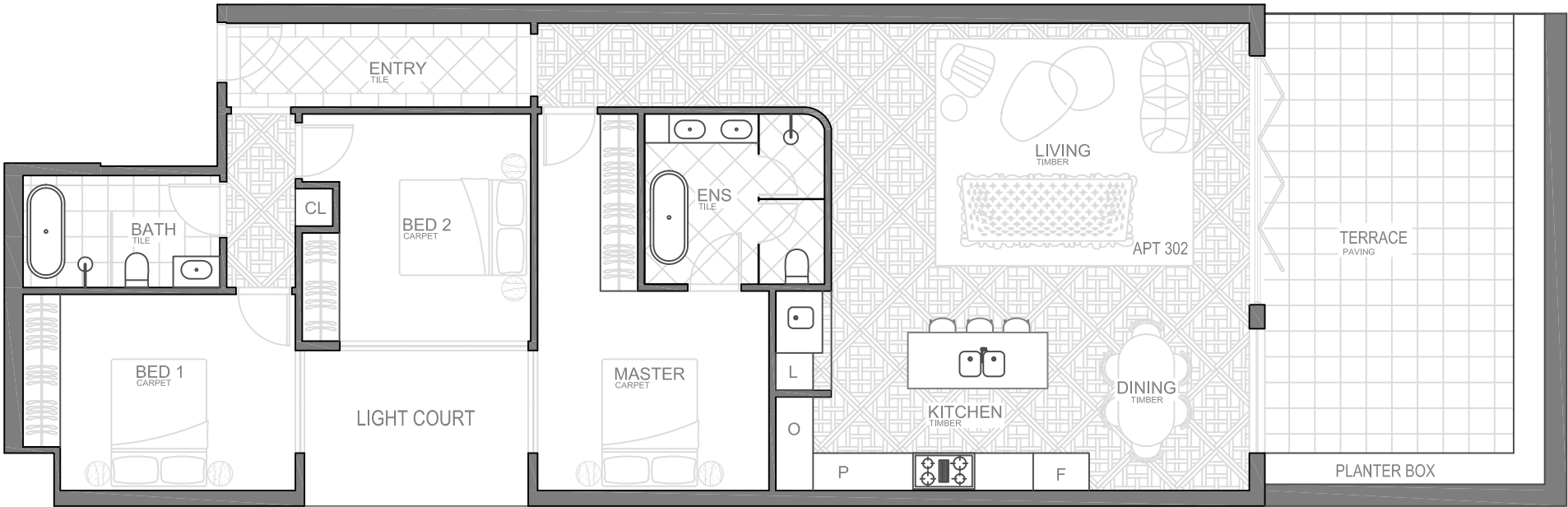
2

1

1

Internal area	141.1m ²
External area	38.3m ²
Total area	179.4m²

Note: Furnishings and hatches are artist impression only, refer to specification sheet for more details.



Scale 1:100

Apartment 303 floorplan

3

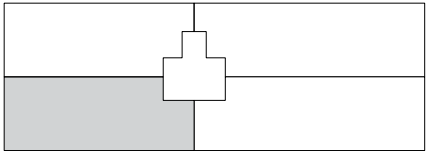
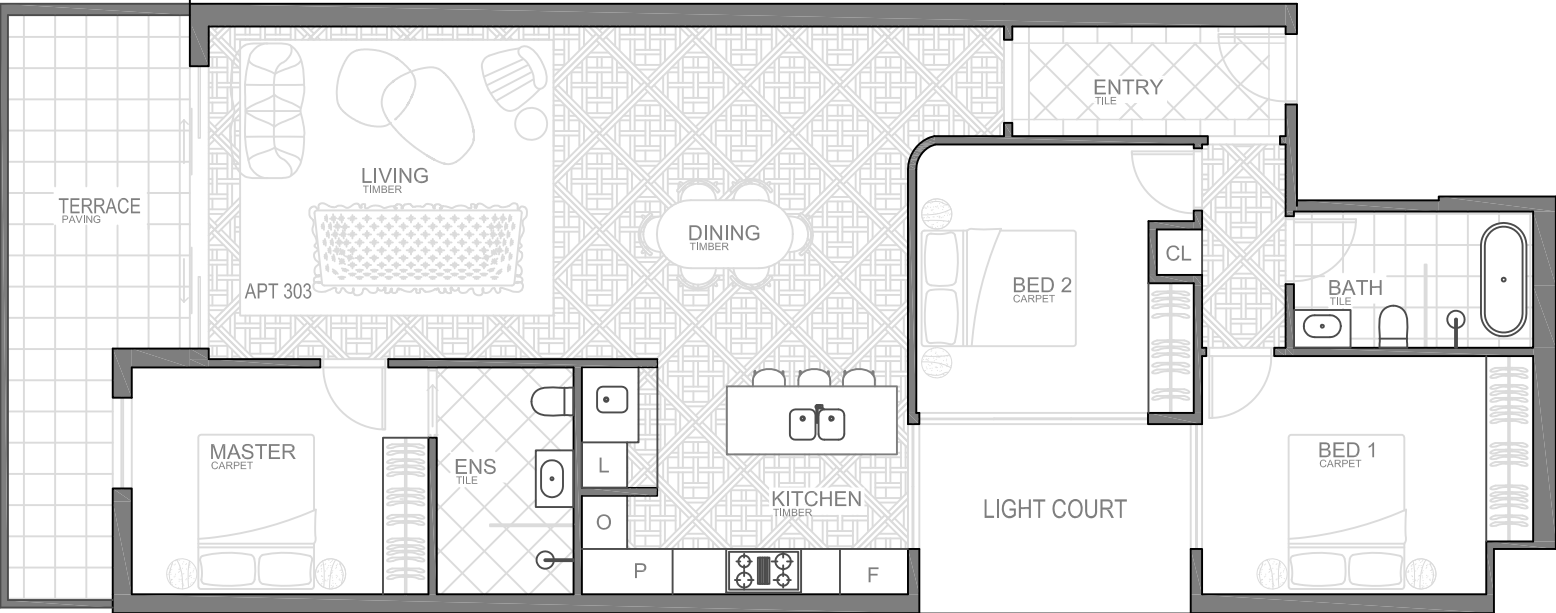
2

1

1

Internal area	127.7m ²
External area	16.2m ²
Total area	143.9m²

Note: Furnishings and hatches are artist impression only, refer to specification sheet for more details.



Scale 1:100

Apartment 304 floorplan

3

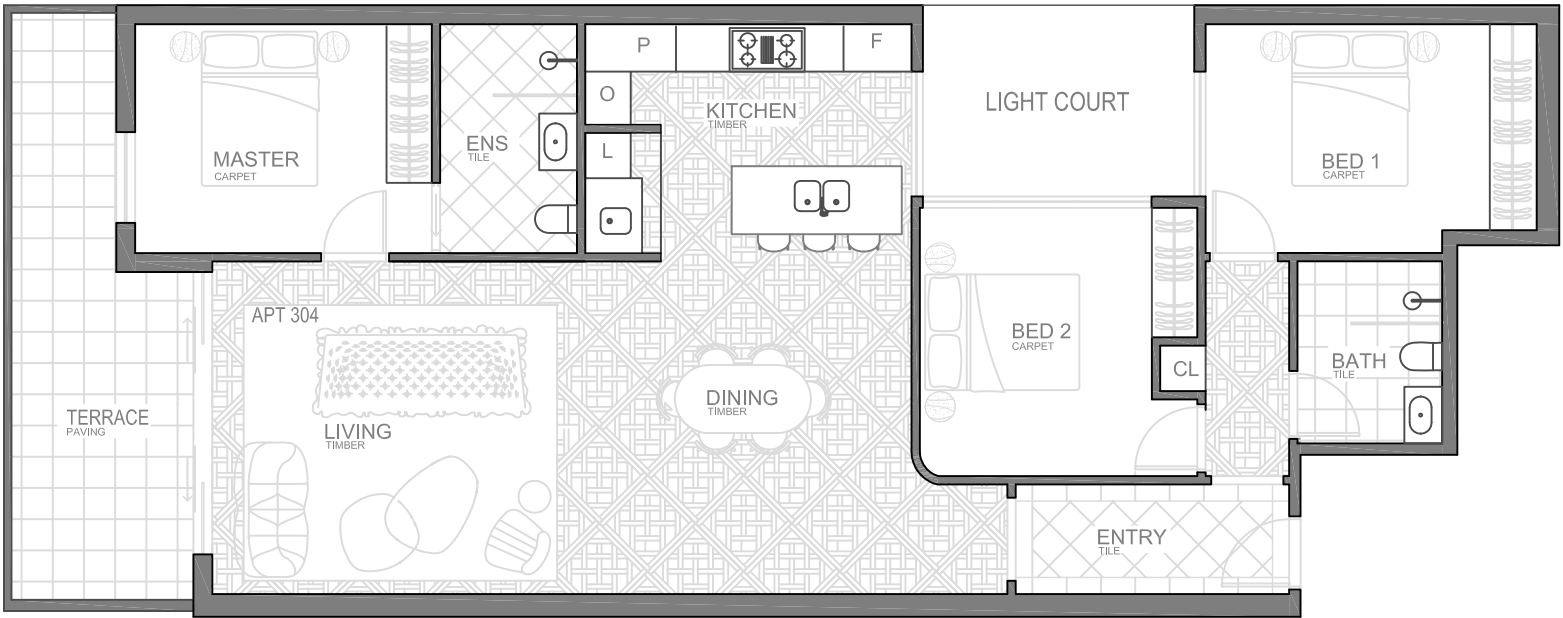
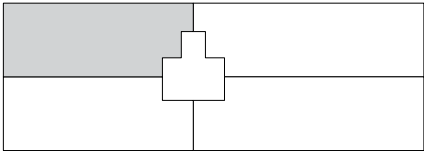
2

1

1

Internal area	126.1m ²
External area	16.2m ²
Total area	142.3m²

Note: Furnishings and hatches are artist impression only, refer to specification sheet for more details.

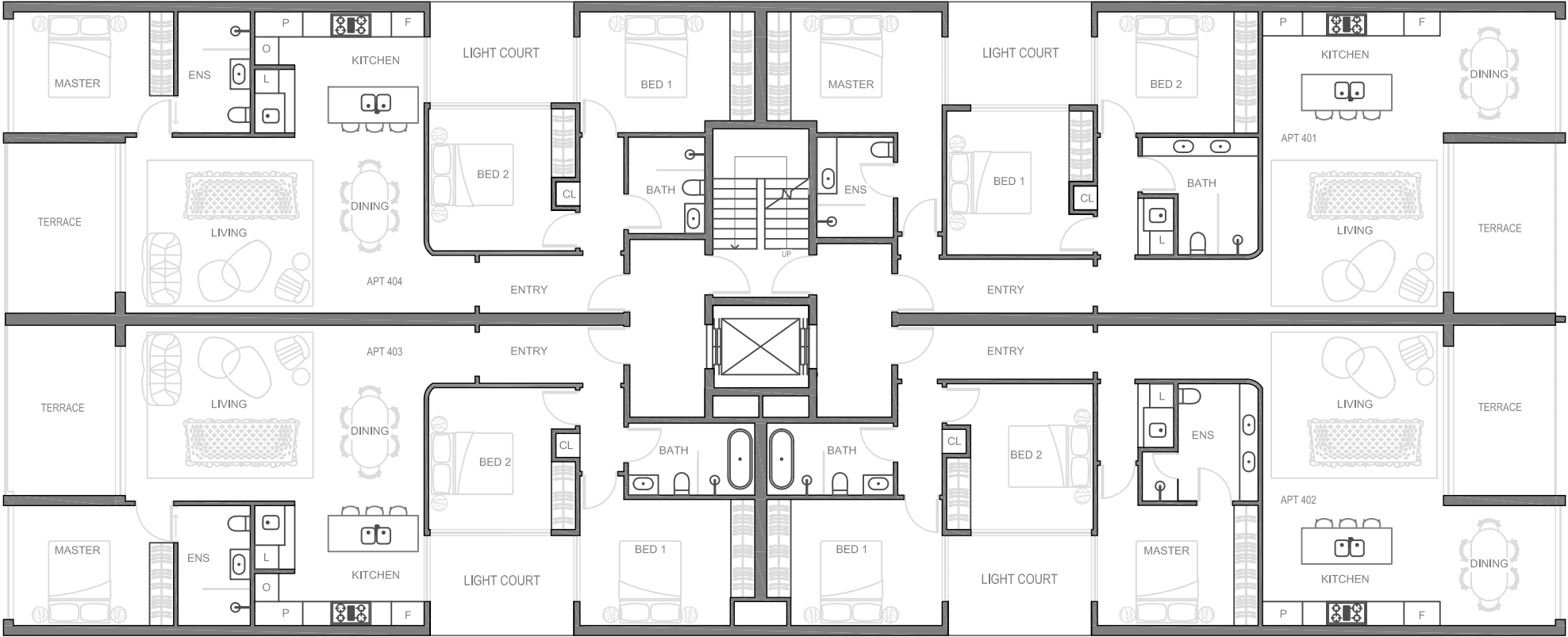


Scale 1:100



Fourth floor

Fourth floor
floorplan



Scale 1:150

Apartment 401 floorplan

3

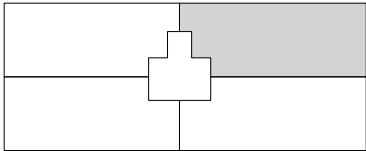
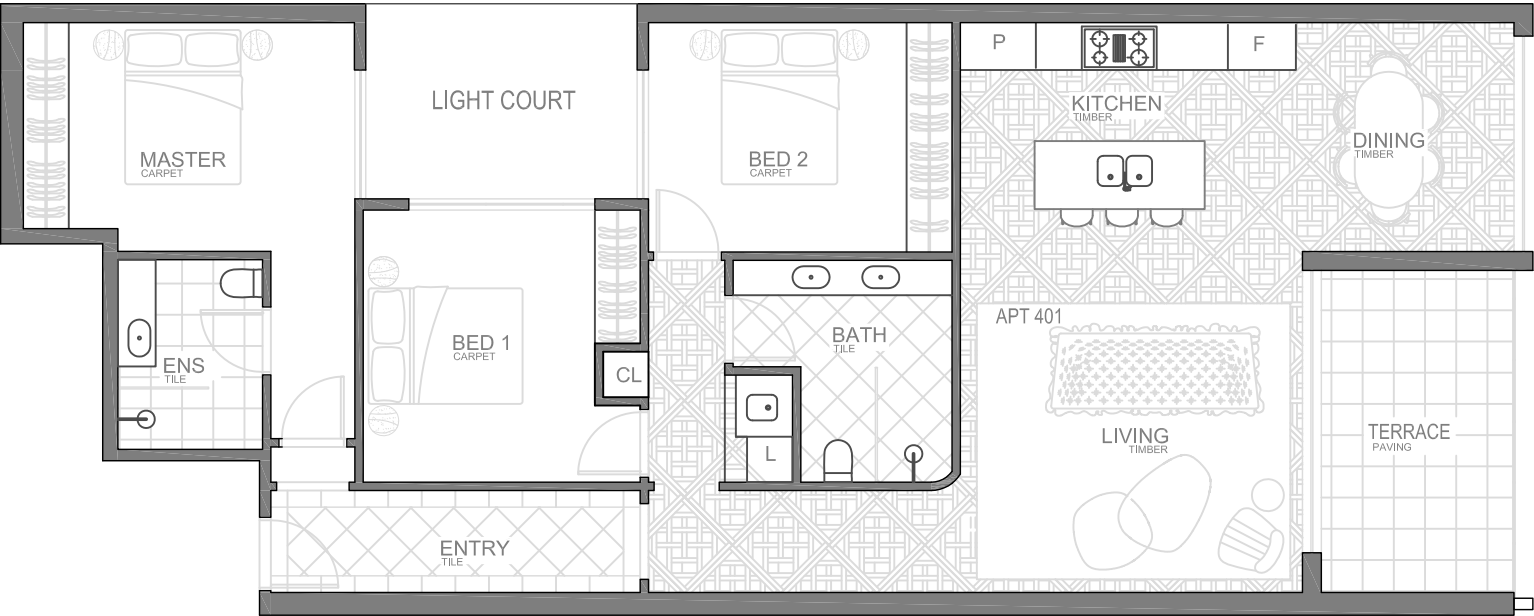
2

1

1

Internal area	127.7m ²
External area	11.2m ²
Total area	138.9m²

Note: Furnishings and hatches are artist impression only, refer to specification sheet for more details.



Scale 1:100

Apartment 402 floorplan

3

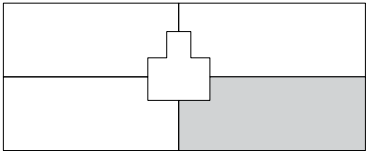
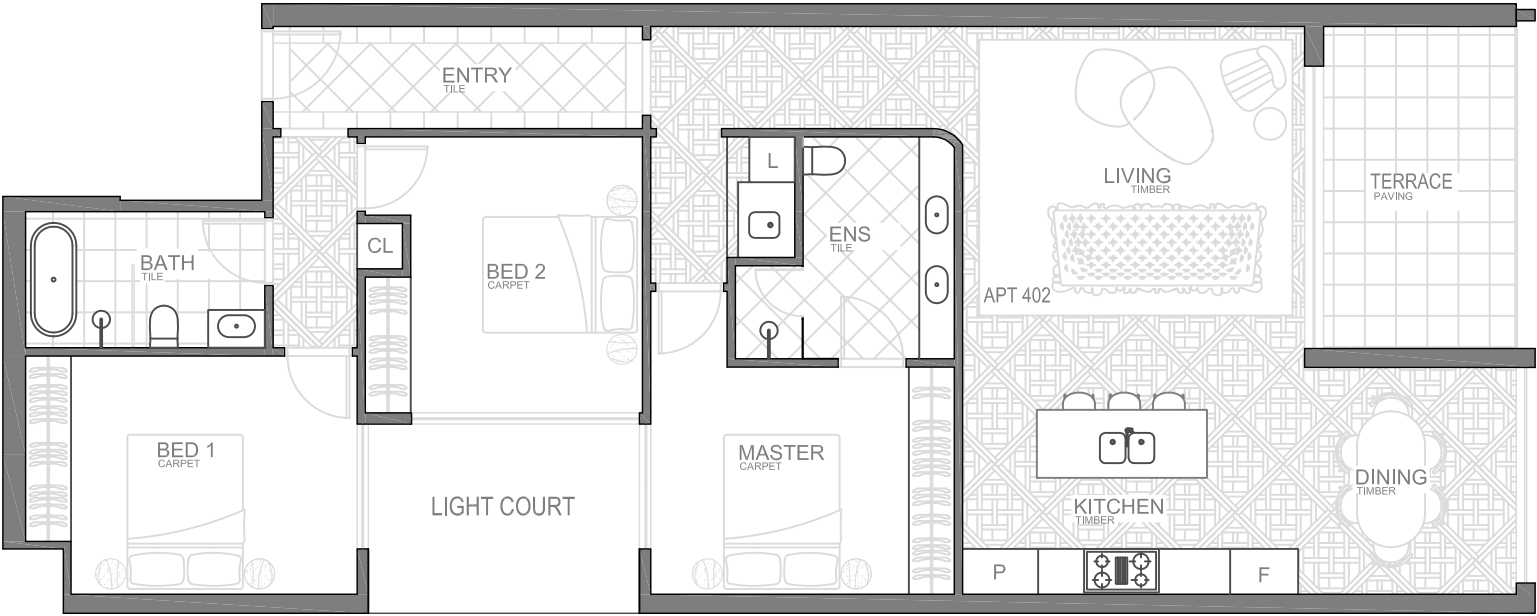
2

1

1

Internal area	128.7m ²
External area	11.2m ²
Total area	139.9m²

Note: Furnishings and hatches are artist impression only, refer to specification sheet for more details.



Scale 1:100

Apartment 403 floorplan

3

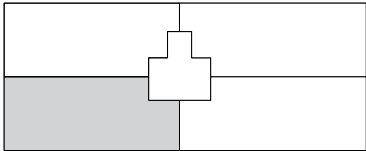
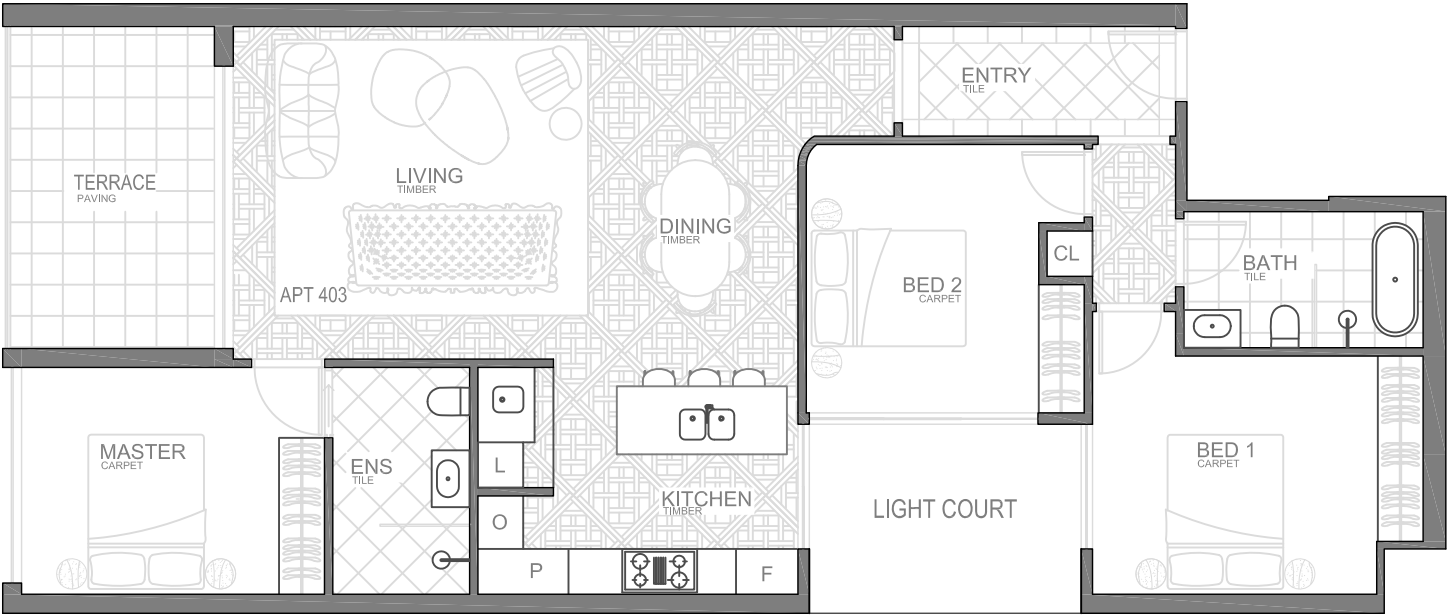
2

1

1

Internal area	119.4m ²
External area	12.1m ²
Total area	131.5m²

Note: Furnishings and hatches are artist impression only, refer to specification sheet for more details.



Scale 1:100

Apartment 404 floorplan

3

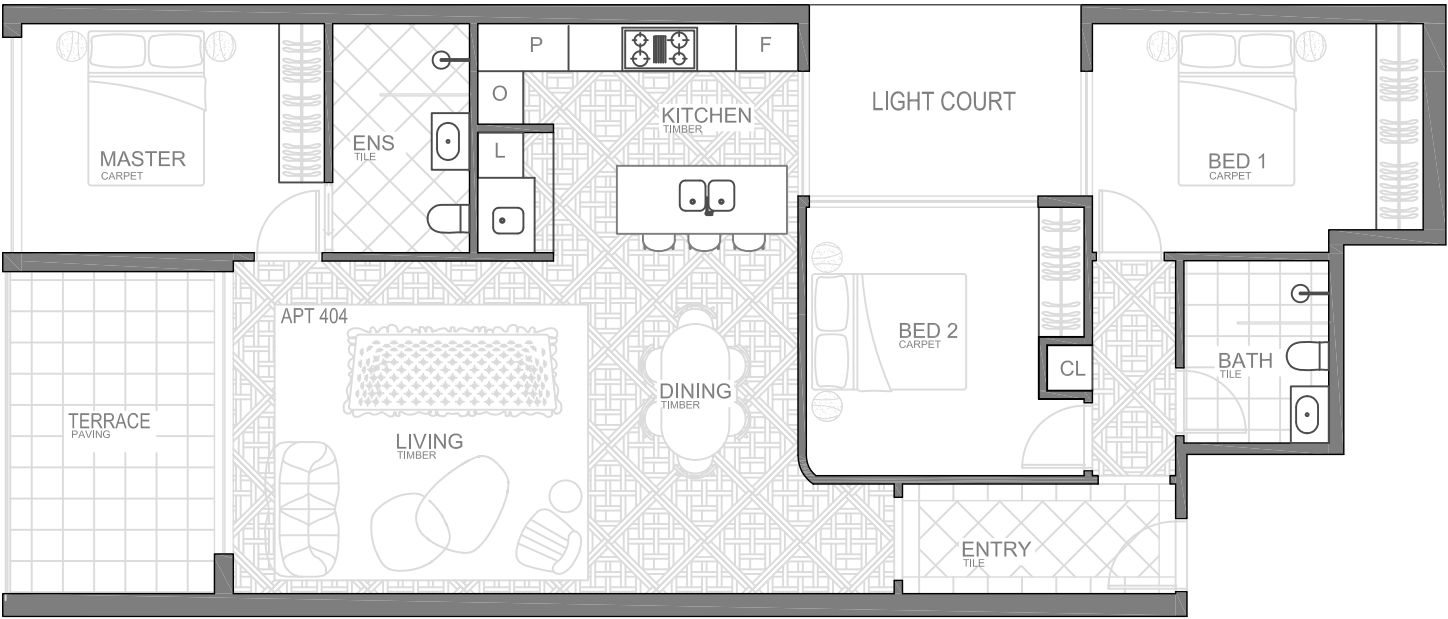
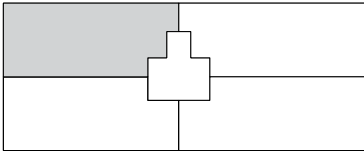
2

1

1

Internal area	118.2m ²
External area	12.1 m ²
Total area	130.3 m²

Note: Furnishings and hatches are artist impression only, refer to specification sheet for more details.



Scale 1:100



Penthouses

Fifth floor penthouses
floorplan



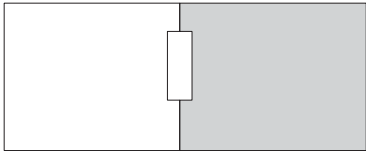
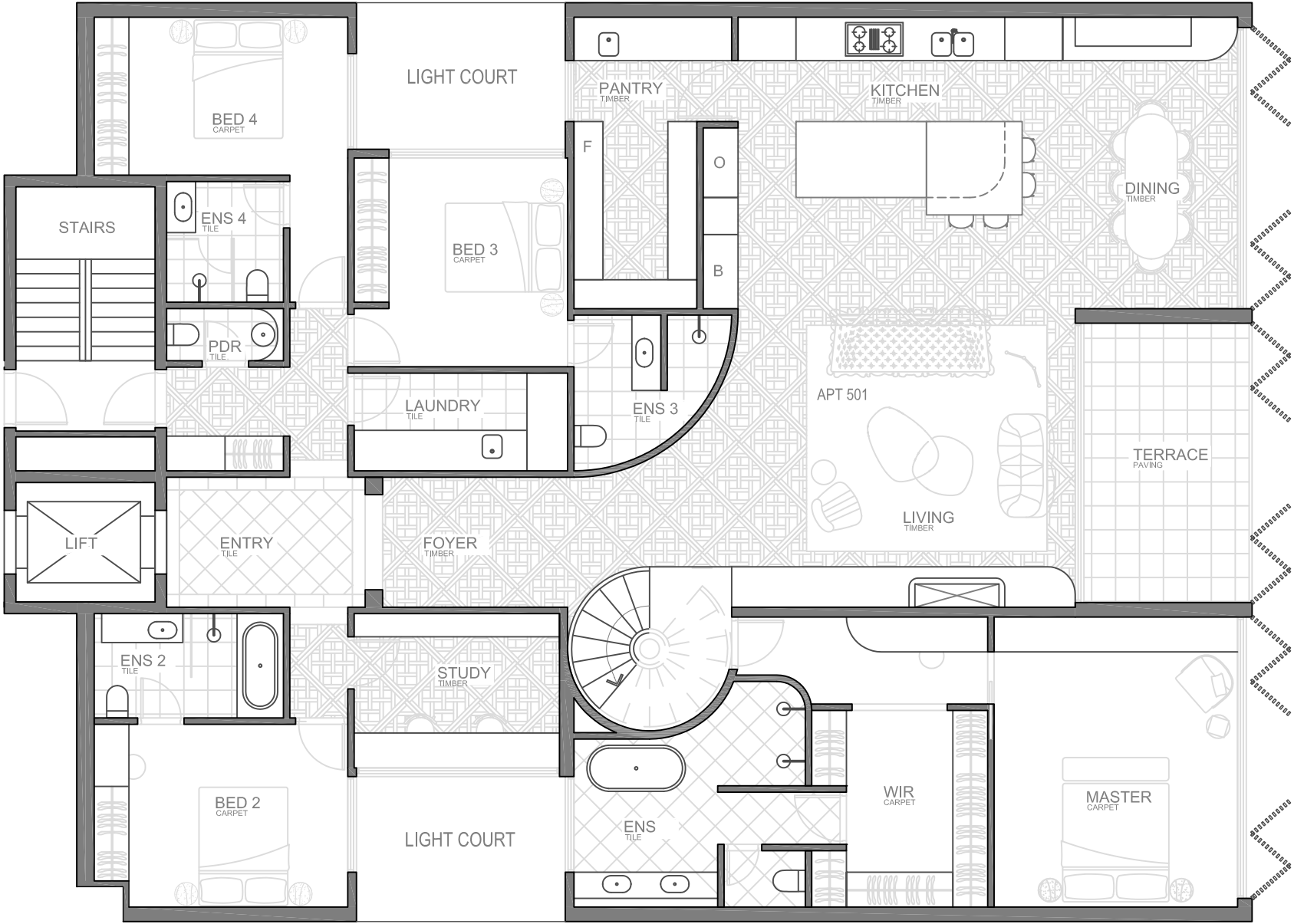
Scale 1:150



Penthouse 501
floorplan

-  4
-  4
-  2

Internal area	276.5m ²
External area	14m ²
Roof terrace area	176.5m ²
Garage area	50.41m ²
Total area	517.41m²



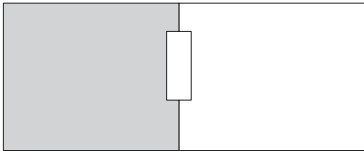
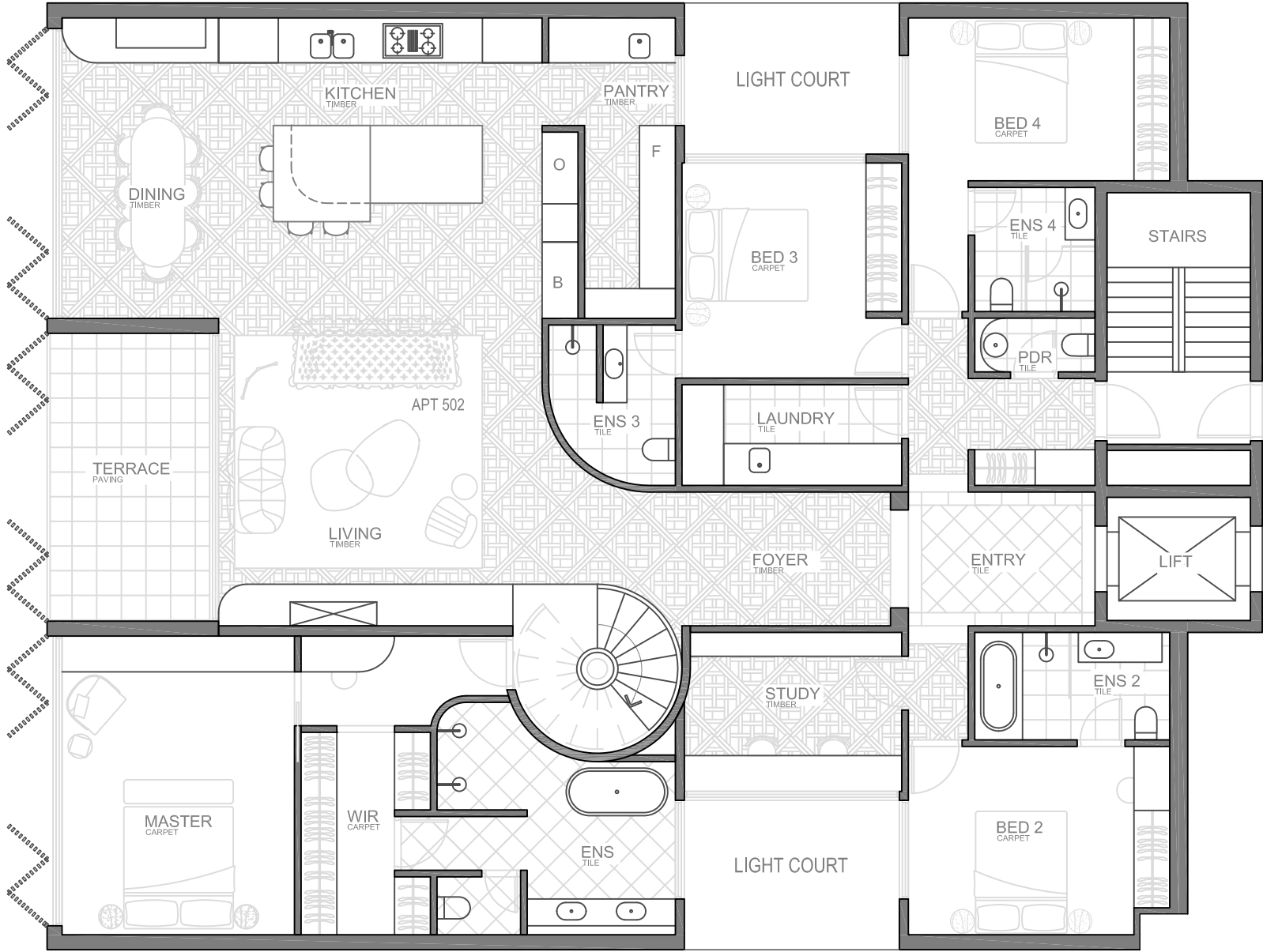
Scale 1:100



Penthouse 502
floorplan

- 4
- 4
- 2

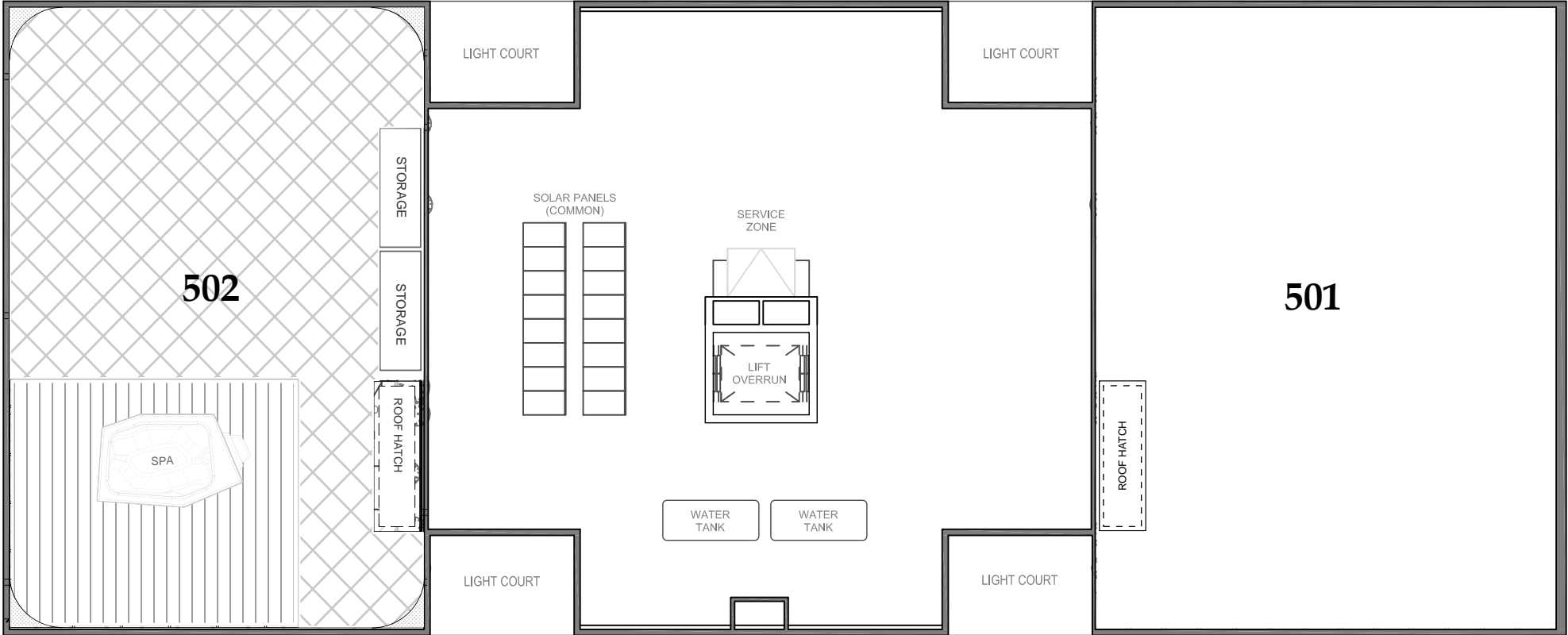
Internal area	258.5m ²
External area	13.2m ²
Roof terrace area	155.9m ²
Garage area	50.41m ²
Total area	478m²



Scale 1:100



Penthouse 501 and 502
roof terrace floorplan





DISCLAIMER

The information within this brochure is indicative only and whilst the developer has endeavoured to provide a fair overview, this brochure does not form an offer, guarantee or contract. All images & illustrations are artists impressions of apartment 501 and are indicative only. Some materials depicted are upgrade options and may not apply to all floor plans. Prospective purchases should refer to each apartment's individual specifications sheet. This Brochure was completed prior to completion of the design and construction of the project, therefore designs, dimensions, fittings and specifications are subjected to change. Prospective purchasers should only rely on their own enquiries, legal advice and contract of sales.



BY SABAU