

Townhome

# Hattan



Artist impression.

## CHURCHILL D | OLIVINE -

 4  2  2

## \$590,390

Build Price \$439,400  
Land Price \$150,990

LOT 1950 LUSK CRESCENT  
DONNYBROOK  
OLIVINE

EST. TITLE DATE Q2 2025  
HOME SIZE 20SQ  
LAND SIZE 168m<sup>2</sup>

## HATTAN TURNKEY INCLUSIONS

- Full Turnkey
- 2590mm High Ceilings
- Holland Roller blinds and fly screens
- 20mm stone benchtop to kitchen with waterfall edge
- Timber laminate flooring to living area
- Quality carpet to bedrooms
- Split system cooling to living
- Premium Splashback to Kitchen
- Coloured Concrete Driveway
- Landscaping and Fencing
- Letterbox and Clothesline
- Alarm System with Sensors
- LED Downlights

# CHURCHILL D | OLIVINE -

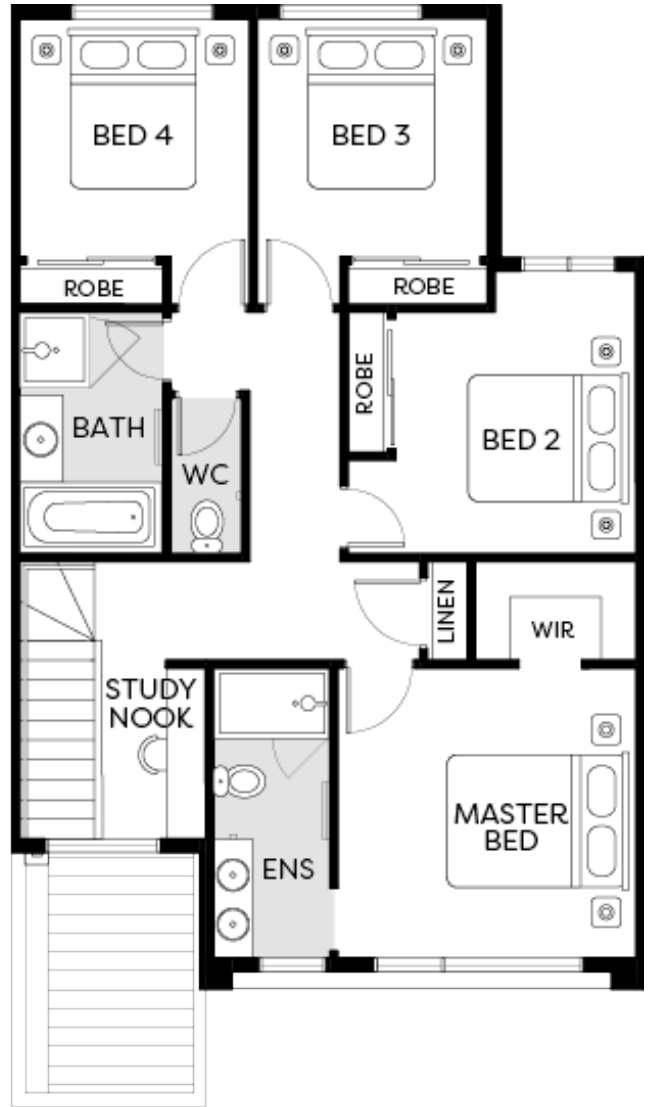
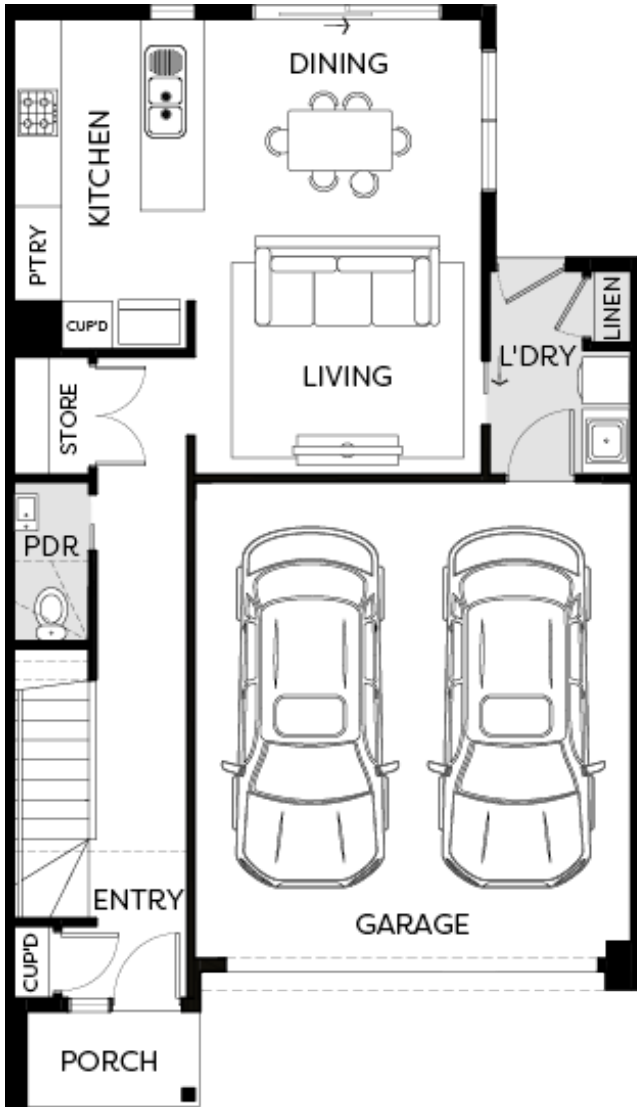
# \$590,390

4 2 2

Build Price \$439,400  
Land Price \$150,990

LOT 1950 LUSK CRESCENT  
DONNYBROOK

EST. TITLE DATE Q2 2025  
HOME SIZE 20SQ  
LAND SIZE 168m<sup>2</sup>



# Hattan

---

Smart Turnkey  
Inclusions

Hattan is Quality. Quality is what makes Hattan a home.



Artist Impression

Discover a seamless blend of sophistication and comfort in our townhomes. Experience vibrant community living, thoughtfully designed spaces and unparalleled comfort and possibilities.

## Why Townhomes?



### Low Maintenance

Townhomes maximise living space by utilising every square meter effectively. Townhomes with lower maintenance yards allow you to enjoy your weekends without worrying about upkeep.



### Low Stamp Duties

Save big on fees! Townhome living means fewer expenses upfront, leaving you with more funds to personalise your space.



### "No Body Corporate Fees, All the Benefits!"

Unlike other properties, most of our townhouses come without the burden of body corporate fees. Enjoy the freedom of homeownership without the additional costs.



### "No Shared Dwelling Walls, Maximum Privacy!"

Unlike apartments and other townhome developments, our townhouses ensure privacy with no shared dwelling walls with neighbours. Enjoy the peace and quiet of a home that's truly your own.



### Cost-Effective

Townhomes often provide a more affordable option than house and land packages, making them ideal for first-time buyers and investors or those looking for a budget-friendly housing solution.



### Urban Accessibility

Townhomes often located in urban or suburban town centers, offering easy access to schools, shopping centres, restaurants, and public transport.



### Investment Potential

Townhomes can be a lucrative investment opportunity. Their lower initial cost and ongoing demand in real estate markets make them an attractive option for investors.



### Customisation

While townhomes share certain design elements, they often allow for customisation, allowing residents to add personal touches and create a home that suits their lifestyle.







Artist Impression

## SITE WORKS

Concrete waffle pod slab, engineer designed "M" up to "P" class\*, maximum 300mm site fall over the building platform, no existing fill.

Slab costs will be adjusted if founding conditions differ.

\*Compaction report "site specific" is required or else other cost incurred.

Based on land size up to 600m<sup>2</sup>, and a maximum building setback of 6m (subject to planning authority).

Engineer design surface drainage, including silt pits with grated covers, connected to stormwater, (2 No) flexible couplings to sewer, engineer design and certification.

Rock removal is included, however any rock requiring explosives or core drilling will be an additional charge.

## CONNECTIONS

Underground electricity, gas, sewer and storm water included.

Telephone conduit and draw cable from the supply pit.

Telephone and electricity fees by owner.

NBN ready.

## EXTERNAL FEATURES

**External:** Light weight cladding.

**Render:** Acrylic texture coating render. Colour to be selected from Hattan colour scheme.

**Infills Over Windows:** Cement sheet infill over windows and doors.

**Roof Cover:** Colorbond Roof to be selected from colour selection.

**Roof Plumbing:** Metal gutter, fascia and flashings to be Colorbond finish.

**Roof Pitch:** 22.5 degree.

**Front Entry Door:** Stain colour to be selected from Hattan colour scheme.

**Windows:** Powder coated aluminum awning windows or timber to front façade only (façade design dependent). Powder coated aluminum sliding windows to side and rear elevations only.

**Sliding Doors:** Aluminum powder coated sliding door. Colour to be selected from Hattan colour scheme.

Locks to all windows and sliding doors keyed alike.

## FRAMING

**Walls:** Stabilised timber frame throughout at 450mm centres to ground floor of double storey homes, 600mm centres to single storey homes and first floor of double storey homes. Timber Sizes to be in accordance with AS1684 Timber Framing Code.

**Roof:** Engineer designed stabilised timber roof trusses at 600mm centres.

## INSULATION

Insulation batts to home to comply with 6 Star Energy Rating.

## INTERNAL FEATURES

**Ceiling Height:** 2590mm ceiling height (nominal) to single storey with 75mm cove cornice. 2590mm ceiling height (nominal) to ground floor of double storey homes, 2440mm ceiling height (nominal) to first floor, 75mm cove cornice throughout.

**Room Doors:** Flush panel Honeycomb Core 2040mm high to single storey, 2040mm high to ground floor and first floor of double storey.

**Room Door Furniture:** Passage set. Provide Alba Chrome levers through Chrome finish.

**Mouldings:** Skirtings – 67x18mm square edge primed MDF. Architraves – 67x18mm square edge primed MDF.

**Plaster:** Ceiling Plaster. 10mm plasterboard finish.

**Wall Plaster:** Plasterboard 10mm thick. Water resistant plasterboard to Ensuite, Bathroom and above Laundry trough.

## PAINT

**Internal and External:** Two coats.

**Woodwork and Skirting:** Two coats.

## HEATING

Panel heating unit installed to living areas and bedrooms (excludes wet areas and area's with split systems) as per manufacturers/suppliers recommendations for home size.

## HOT WATER SYSTEM

Hot water unit in accordance with estate design guidelines.

## KITCHEN

Fisher & Paykel oven 600mm.  
Fisher & Paykel cooktop 600mm 4 burner stainless steel gas cooktop.  
Fisher & Paykel rangehood 600mm stainless steel.  
Fisher & Paykel dishwasher 600mm.

**Sink:** Stainless steel double bowl sink.

**Tap:** Mixer gooseneck in chrome finish.

**Bench Top:** Engineered stone benchtop 20mm. Choose colour from Hattan colour scheme.

**Splashback:** Selected as per Hattan colour scheme. Regent design white subway tiles.

## BATHROOM, ENSUITE, POWDER ROOM & WC

**Mirror:** Polished edges to full width of vanities sitting on 200mm tile splashback.

**Basin:** Ceramic abovement 440mm round, 120mm high, No tap hole low profile square inset basin (white), chrome

waste 1 tap hole/overflow.

**Vanity Unit:** Floating vanity unit on tiled pedestal.

**Bench Top:** Engineered stone benchtop 20mm. Choose colour from Hattan colour scheme.

**Bath:** 1525/1675mm acrylic bath (white) in tiled podium. (Design Specific)

**Shower Bases:** Ceramic tiled shower base. Selection from Hattan colour scheme range with Stainless Steel Centre Waste.

**Shower Screens:** 1950mm high semi frameless with pivot door and clear laminated glass.

**Taps and Outlets:** Ensuite Shower hand shower on rail. Bathroom Shower – Shower hand shower on rail. Bath (Wall Mounted) – Straight wall bath outlet and wall mixer. Basin (Wall Mounted) – Wall mixer.

**Accessories:** Toilet roll holders chrome, double towel rails and soap dish holders to showers.

**Toilet Suite:** China toilet suite in white with soft close seat.

## LAUNDRY

**Trough:** Design specific.

**Base Cupboard:** 800mm wide fully lined modular cabinet, refer to working drawings.

**Bench Top:** Laminate with square edge.

**Tapware:** Sink mixer in chrome finish.

## ELECTRICAL

**Internal Light Points:** Recessed LED downlight in white non-metallic polyamide housing with diffuser.

**External Light Points:** (2 No) flood light wall mounted light fitting.

**Power Points:** White surround, double power points throughout excluding dishwasher, microwave and refrigerator provision, where single power point is provided.

**Smoke Detector:** Hardwired with battery backup.

**Exhaust Fans:** Above all showers not opening to outside air, 250mm with self-sealing air flow draft stoppers.

**TV Points:** To Family and Master Bedroom.

**Telephone Point:** To Kitchen and Master Bedroom.

**Safety Switch:** Residual Current Devices safety switch and circuit breakers to meter box.

## PLUMBING

(2 No) garden taps, one located to the front water meter and one adjacent the external Laundry door.



## TILING

**Ceramic Floor Tiles:** Selected from Hattan colour scheme 400x400mm to Laundry, Ensuite, Bathroom, WC, Internal Courtyard and Powder room.

**Ceramic Wall Tiles:** Selected from Hattan colour scheme 400x400mm to Laundry, Ensuite, Bathroom, WC, Powder room, shower recesses and above bath

## FLOOR COVERING

**Carpet:** Selected from Hattan colour scheme to Bedrooms, WIR, Activity and Staircase.

**Timber Laminate:** Selected from Hattan colour scheme timber look laminate flooring to Entry, Kitchen, WIP, Meals, Family, Living, Rear Hallway, Lounge and Study.

## STORAGE

**Shelving:** Robes – One white melamine shelf and hanging rail.

Walk in Robe – One white melamine shelf and hanging rail.

Pantry/Linen – Four white melamine shelves.

Broom – One white melamine shelf (Design specific).

## STAIRS (DOUBLE STOREY HOMES)

Plaster dwarf walls to stairs and void areas with painted timber handrail (refer to staircase layout).

## CAR ACCOMMODATION

**Garage Door:** 2100mm high x 4800mm wide Colorbond sectional door in flat line profile.

**Remote Control:** Remote control unit to front garage door with 2 handsets.

## OUTDOOR

**Landscaping:** Garden and plants to the front and rear. Instant turf to rear yard. Or as per landscape design on drawings.

**Fencing:** 1800mm high timber paling/Colorbond including wing fence and gate to suit estate design covenants.

**Paving:** Coloured concrete to driveway and front path.

**Letterbox:** Pre cast concrete letterbox with colour to match house.

**Clothesline:** Fold out clothesline in rear yard.

## ABOUT US

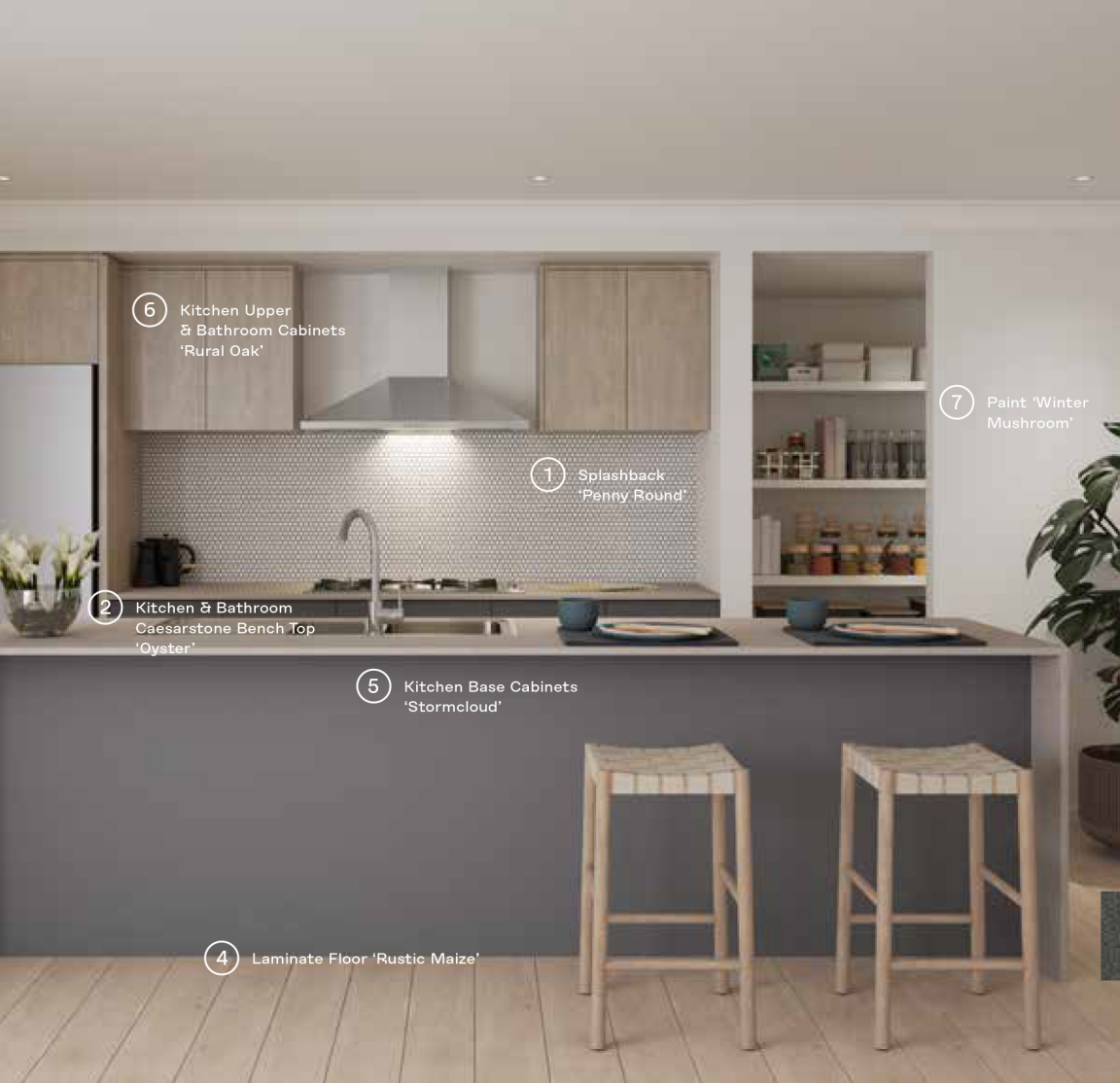
Member of Master Builders Association & Housing Industry of Australia.

10-year structural guarantee.

Hattan reserves the right to amend specification without prior notice. Products may vary depending on availability.

Imagery for illustrative purposes.





6 Kitchen Upper & Bathroom Cabinets 'Rural Oak'

1 Splashback 'Penny Round'

7 Paint 'Winter Mushroom'

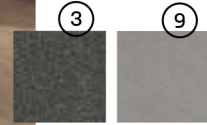
2 Kitchen & Bathroom Caesarstone Bench Top 'Oyster'

5 Kitchen Base Cabinets 'Stormcloud'

4 Laminate Floor 'Rustic Maize'

## Kitchen Colour Scheme 04

- 1 Splashback 'Penny Round'
- 2 Kitchen & Bathroom Caesarstone Bench Top 'Oyster'
- 3 Carpet Rumble 'Storm Cloud'
- 4 Laminate Floor 'Rustic Maize'
- 5 Kitchen Base Cabinets 'Stormcloud'
- 6 Kitchen Upper & Bathroom Cabinets 'Rural Oak'
- 7 Paint 'Winter Mushroom'
- 8 Tile Simplicity Dark Grey Natural 400 x 400
- 9 Laundry Bench Top 'Basalt'



7 Paint 'Winter Mushroom'

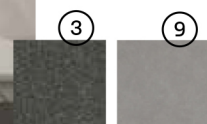
8 Tile Simplicity Dark Grey Natural 400x400

2 Kitchen & Bathroom Caesarstone Bench Top 'Oyster'

6 Kitchen Upper & Bathroom Cabinets 'Rural Oak'

## Bathroom Colour Scheme 04

- 1 Splashback 'Penny Round'
- 2 Kitchen & Bathroom Caesarstone Bench Top 'Oyster'
- 3 Carpet Rumble 'Storm Cloud'
- 4 Laminate Floor 'Rustic Maize'
- 5 Kitchen Base Cabinets 'Stormcloud'
- 6 Kitchen Upper & Bathroom Cabinets 'Rural Oak'
- 7 Paint 'Winter Mushroom'
- 8 Tile Simplicity Dark Grey Natural 400 x 400
- 9 Laundry Bench Top 'Basalt'







6 Kitchen Upper & Bathroom Cabinets 'Bleached Elm'

1 Splashback Luc Statuario Lunensis

7 Paint 'Wattyl White'

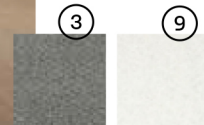
2 Kitchen & Bathroom Caesarstone Bench Top 'Snow'

5 Kitchen Base Cabinets 'Calm White'

4 Laminate Floor 'Rustic Oatmeal'

## Kitchen Colour Scheme 05

- 1 Splashback Luc Statuario Lunensis
- 2 Kitchen & Bathroom Caesarstone Bench Top 'Snow'
- 3 Carpet Rumble 'Light Shadow'
- 4 Laminate Floor 'Rustic Oatmeal'
- 5 Kitchen Base Cabinets 'Calm White'
- 6 Kitchen Upper & Bathroom Cabinets 'Bleached Elm'
- 7 Paint 'Wattyl White'
- 8 Tile Simplicity Sand Natural 400 x 400
- 9 Laundry Bench Top 'Fresh Snow'



7 Paint 'Wattyl White'

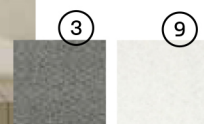
8 Tile Simplicity Sand Natural 400x400

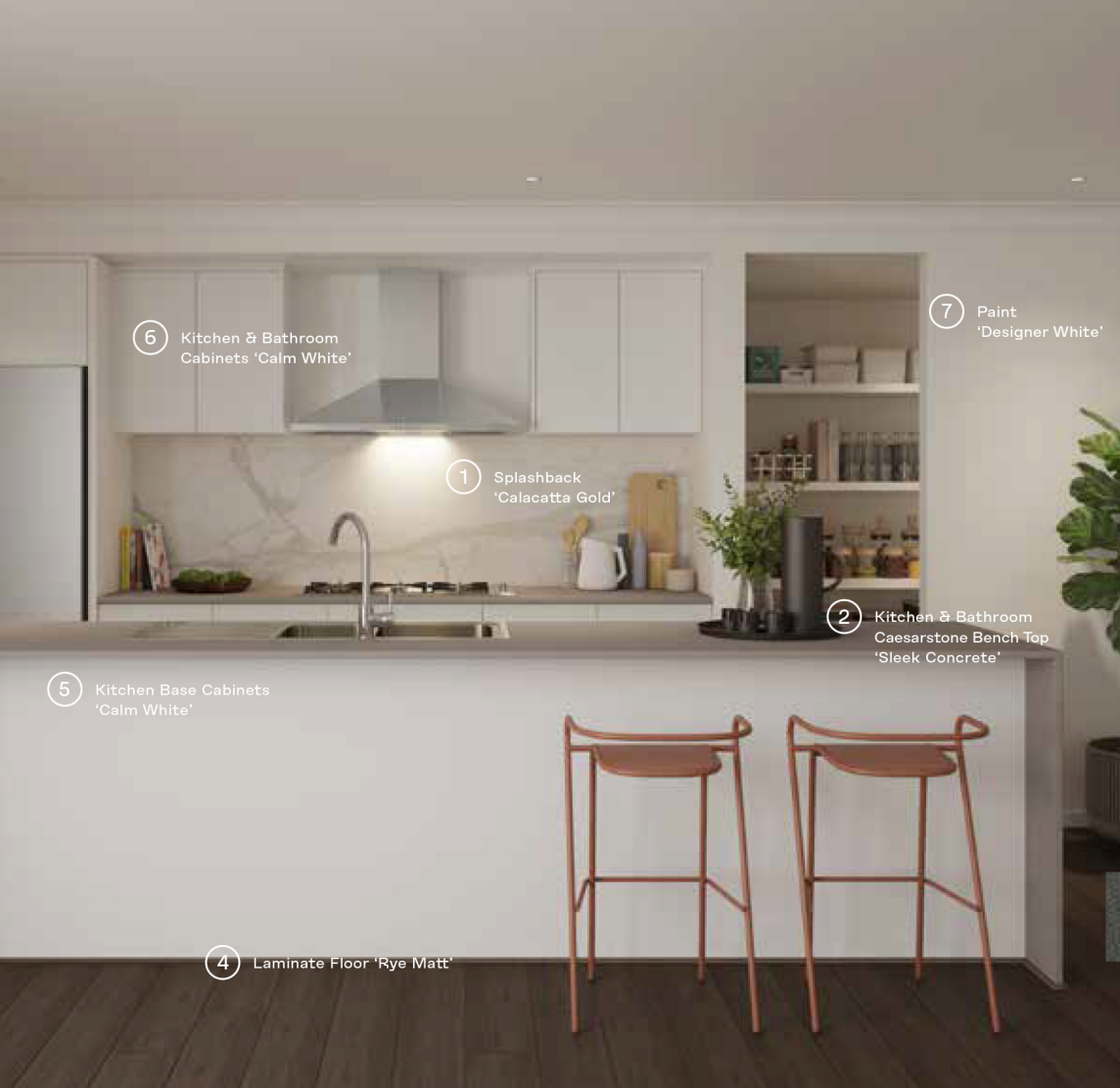
2 Kitchen & Bathroom Caesarstone Bench Top 'Snow'

6 Kitchen Upper & Bathroom Cabinets 'Bleached Elm'

## Bathroom Colour Scheme 05

- 1 Splashback Luc Statuario Lunensis
- 2 Kitchen & Bathroom Caesarstone Bench Top 'Snow'
- 3 Carpet Rumble 'Light Shadow'
- 4 Laminate Floor 'Rustic Oatmeal'
- 5 Kitchen Base Cabinets 'Calm White'
- 6 Kitchen Upper & Bathroom Cabinets 'Bleached Elm'
- 7 Paint 'Wattyl White'
- 8 Tile Simplicity Sand Natural 400 x 400
- 9 Laundry Bench Top 'Fresh Snow'





6 Kitchen & Bathroom Cabinets 'Calm White'

1 Splashback 'Calacatta Gold'

7 Paint 'Designer White'

2 Kitchen & Bathroom Caesarstone Bench Top 'Sleek Concrete'

5 Kitchen Base Cabinets 'Calm White'

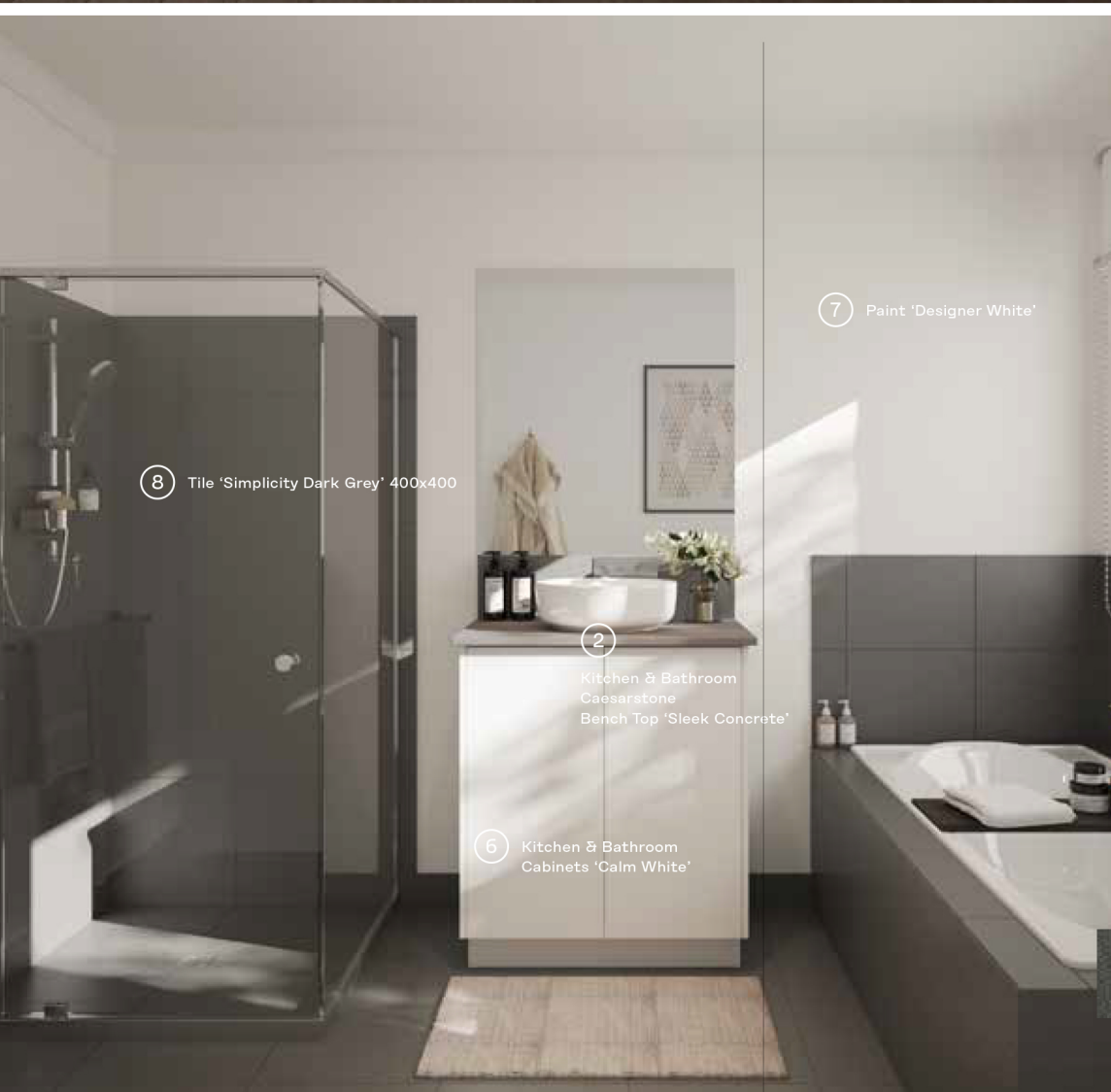
4 Laminate Floor 'Rye Matt'

## Kitchen Colour Scheme 06

- 1 Splashback 'Calacatta Gold'
- 2 Kitchen & Bathroom Caesarstone Bench Top 'Sleek Concrete'
- 3 Carpet 'Storm Cloud'
- 4 Laminate Floor 'Rye Matt'
- 5 Kitchen Base Cabinets 'Calm White'
- 6 Kitchen & Bathroom Cabinets 'Calm White'
- 7 Paint 'Designer White'
- 8 Tile 'Simplicity Dark Grey' 400 x 400
- 9 Laundry Bench Top 'Fresh Snow'

3

9



7 Paint 'Designer White'

8 Tile 'Simplicity Dark Grey' 400x400

2 Kitchen & Bathroom Caesarstone Bench Top 'Sleek Concrete'

6 Kitchen & Bathroom Cabinets 'Calm White'

## Bathroom Colour Scheme 06

- 1 Splashback 'Calacatta Gold'
- 2 Kitchen & Bathroom Caesarstone Bench Top 'Sleek Concrete'
- 3 Carpet 'Storm Cloud'
- 4 Laminate Floor 'Rye Matt'
- 5 Kitchen Base Cabinets 'Calm White'
- 6 Kitchen & Bathroom Cabinets 'Calm White'
- 7 Paint 'Designer White'
- 8 Tile 'Simplicity Dark Grey' 400 x 400
- 9 Laundry Bench Top 'Fresh Snow'

3

9