

# RIVERWALK

W E R R I B E E



DEVELOPMENT  
VICTORIA

A project by



VICTORIA  
State  
Government

# Be at the heart of it all.

## Creating a better Victoria

At Development Victoria we're passionate about making Victoria a great place to live, work and play.

We create vibrant places across our state, through diverse and strategic property development and urban renewal projects. As the Victorian Government's development arm, we revitalise iconic public buildings, create important cultural and recreational facilities and repurpose public land, for all Victorians.

We also build great homes and communities where people and business can thrive, catering for different budgets, lifestyles and people – designed to be sustainable and affordable.

We help create a better Victoria.



A project by





Come home to a vibrant community alive with neighbourhood spirit set against the scenic Werribee River, enriched by green parklands, waterways and minutes from an abundance of lifestyle amenity.



Be at the heart  
of an established  
community.

*A modern lifestyle is yours in  
a friendly community at the  
heart of Werribee's thriving hub.*

Join the many like-minded families  
enjoying the established urban and  
recreational amenity on offer.





## Be at the heart of community spirit.

*Join a friendly engaged community with its own program of events for bringing residents and families together.*



Work It Out - Skateboarding

Moonlight Cinema



Work It Out - Basketball

A range of activities, initiated by Development Victoria, will delight all ages and build new friendships.



Work It Out - Yoga







Moonlight Cinema



Work It Out - Fitness



Family Day Out



Work It Out - Basketball



Work It Out - Soccer



## Be at the heart of Riverwalk's Future Town Centre



*The Future Town Centre  
will be a central hub where  
residents can meet, socialise  
and shop for daily essentials.*

A supermarket, retail stores, café  
and services are all on the doorstep  
for unrivalled convenience.





Be at the heart  
of an aspirational  
lifestyle.

*Imagine your modern  
spacious home nestled amongst  
landscaped public spaces and  
set on tree-lined streetscapes.*

Watch your family thrive in  
a beautiful natural environment  
in a harmonious community that  
offers an enviable lifestyle.



ARTIST IMPRESSION Riverwalk Streetscape

## RIVERWALK PREMIUM

Be at the heart  
of a prized location.

*Aspire to an exceptional lifestyle  
at Riverwalk Premium, an  
unrivalled riverfront location  
within the established Riverwalk  
community in the heart of  
vibrant Werribee.*

A unique experience of incomparable family living awaits in a secluded sanctuary nestled beside the picturesque Riverfront Parklands of the Werribee River. With its own landmark entry on Newmarket Road, Riverwalk Premium boasts a prime position for its exclusive offering.

Build the home of your dreams on one of the lush tree-lined streets of Riverwalk Premium's three neighbourhoods: The Promenade, The Grove or The Banks. Walk down to the riverbank and the community's sports and recreation areas.

Enjoy the utmost convenience and connection to all the spoils of dynamic Riverwalk from your riverside home. Embrace a riverfront lifestyle at Riverwalk Premium.



## Be at the heart of education.

*Quality education is within walking distance for all residents and their families.*

Brand new, best-in-class education facilities, including the recently opened Riverwalk Primary School, a future Secondary School and a new Early Learning Centre, all directly connected to Riverwalk.



Riverwalk Primary School



## Be at the heart of an active community.

*Family fun and an active lifestyle are yours at Riverwalk.*

Enjoy the outdoors at the future Riverwalk Sports & Recreation Reserve, local parks and ovals. Cheer on young champions at Eagle Stadium, Werribee Indoor Sports Centre and Swim Centre, all within 4kms. Werribee Open Range Zoo, just 20-minutes away, is the perfect family treat.





# Be at the heart of family enjoyment.

*The Village Park:  
a beloved destination  
for the entire community.*

All ages will be captivated by the magic of the Village Park with its water play area. Picnics or BBQs with family and friends will sow the seeds of lifetime memories.

## 1. The Hub

Featuring a basketball court and skate zone.

## 2. BBQ & Picnic Area

Excellent facilities make entertaining a breeze.

## 3. Amphitheatre Lawn

An impressive grassed oval perfect for ball games and open air entertainment.

## 4. Water Play Area

Little ones will rejoice as they play in the water under sun-drenched skies.

## 5. Playground Area

An intricate maze of equipment ranging from swings and slides to various climbing equipment catering for all ages.

## 6. Wetlands

Home to a range of wildlife whilst also contributing to the water-sensitive urban design of the park.

## 7. Exhibition Gardens

Featuring a range of local and native plants.

## 8. Market Pavilions

A mixed-use space featuring sheltered areas serving as a gathering point for local families.





## Be at the heart of everything Werribee has to offer.

*Live close to all the spoils of city living.*

Take a 5-minute drive to Werribee City Centre and the popular Watton Street shopping strip with its supermarkets, fresh food outlets, great cafes and restaurants.



The West's largest retail centre, Pacific Werribee is less than 8kms away, while Werribee Train Station is just moments away.





## Be at the heart of nature.

*Immerse yourself in the natural wonderland on the doorstep of Riverwalk.*

Cycle, walk, play and explore wildlife at Werribee River. Take in fresh air and serenity as you kayak or canoe the waterways.





# Be at the heart of urban connectivity.

## Education

- 1 Werribee Primary School
- 2 Werribee Secondary College
- 3 Iramoo Primary School
- 4 Hoppers Crossing Secondary College
- 5 Westbourne Grammar School
- 6 Victoria University, Werribee Campus
- 7 Corpus Christi Primary School
- 8 MacKillop Catholic Regional College
- 9 St Andrew's Primary School
- 10 Thomas Chirnside Primary School
- 11 Manorvale Primary School
- 12 Little Blossoms Child Care Centre
- 13 RMIT University, Point Cook Campus
- 14 University of Melbourne - Werribee Campus
- 15 Suzanne Cory High School

## Health

- 16 Werribee Mercy Hospital
- 17 Werribee Medical Centre
- 18 Werribee Medical & Dental Centre

## Lifestyle, Leisure & Dining

- 19 Wyndham Cultural Centre
- 20 Presidents Park
- 21 Werribee Indoor Sports Centre
- 22 Werribee Polo Field
- 23 National Equestrian Centre
- 24 Werribee Open Range Zoo
- 25 Werribee Park Golf Club
- 26 Werribee Racecourse & Recreation Reserve
- 27 Mansion Hotel & Spa at Werribee Park
- 28 Shadowfax Wines
- 29 Village Cinemas
- 30 Werribee Swim Centre
- 31 The Views Function Bar And Grill
- 32 Wyndham Cache
- 33 Eagle Stadium
- 34 Chirnside Park:
  - Avalon Airport Oval
  - Werribee Outdoor Pool
  - Werribee Tennis Club
  - Werribee Bowls Club

## Amenities

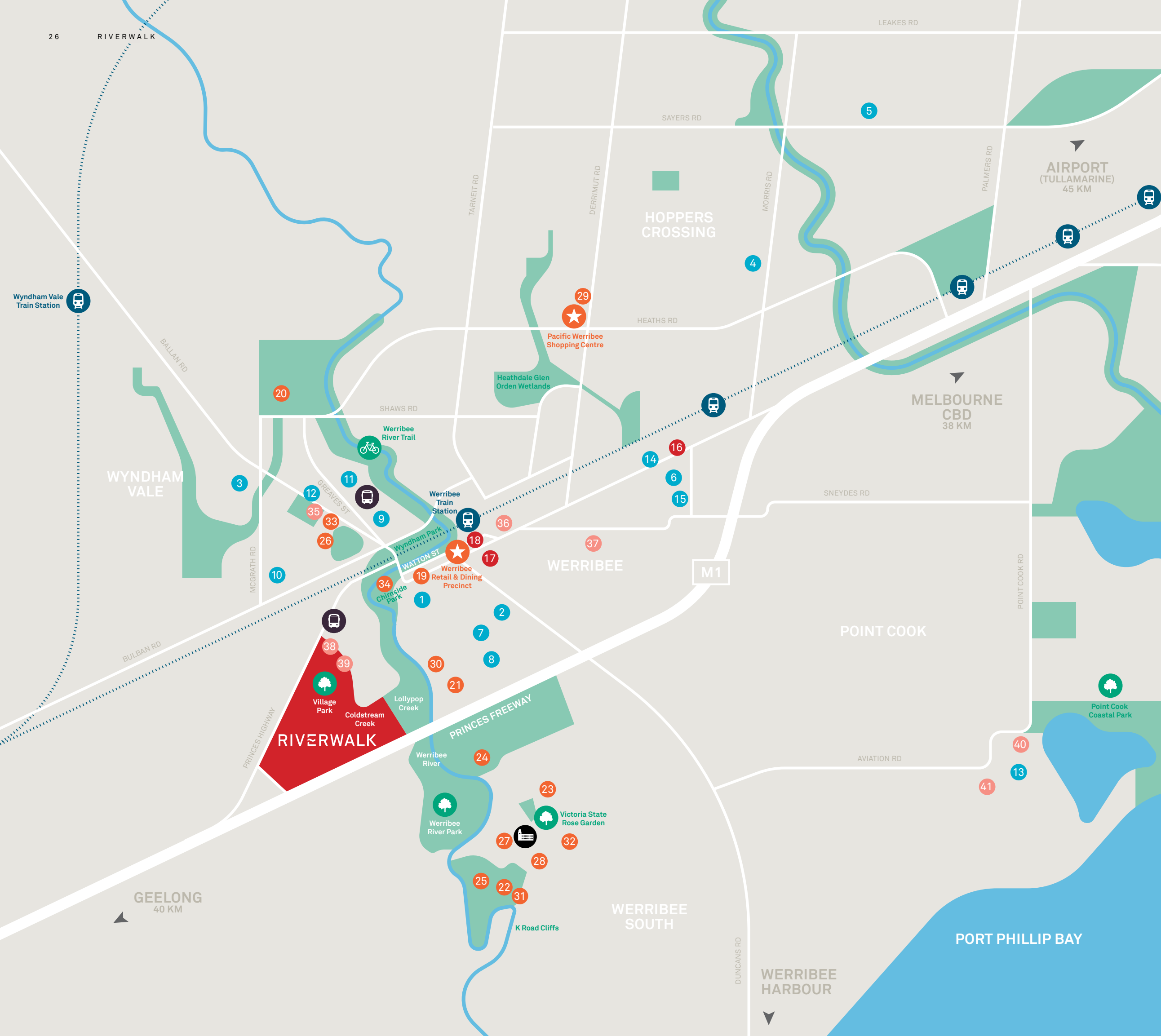
- 35 Werribee West Family Centre
- 36 Wyndham City Council
- 37 CSIRO
- 38 B-24 Liberator Memorial
- 39 Melbourne Water Discovery Centre
- 40 RAAF Williams Point Cook Base
- 41 RAAF Museum

— River

🚉 Railway Stations

🚌 Bus stops

🏛️ Werribee Park Mansion





Aspirational living is yours at Riverwalk, a vibrant established community set in natural surrounds, with a strong community spirit and immediate access to an abundance of lifestyle amenity.

[myriverwalk.com.au](http://myriverwalk.com.au)  
(03) 8317 3478



/MyRiverwalk



@myriverwalk

Artists impression images are conceptual and intended to be for illustrative purposes only. Details may not be accurate and may not be to scale. The plans and images are indicative only and subject to change. Details are not necessarily correct or to scale. Subject to Planning, Council and Government authorities approval.