

The logo features a central rectangular area with a background of numerous thin, wavy, horizontal lines in a slightly darker shade of blue than the main background. The word "Riverina" is centered within this area in a large, orange, serif font. Below it, the words "CITY OF MARIBYRNONG" are centered in a smaller, orange, sans-serif font.

Riverina

CITY OF MARIBYRNONG



ARTIST IMPRESSION OF EXTERIOR

Project Team

RIVERINA

DEVELOPER

AZX Group



AZX is arguably the most active player in the Melbourne property market, having acquired some of the most significant and unique new landholdings within the CBD, Docklands and inner fringe suburbs. With a line-up of projects due to launch in 2015 and 2016, the group's voracious approach to developing premium properties is clear, with quality and proficiency always at the forefront of their continued success. With a current head office in Melbourne and future plans to expand to Sydney, Brisbane and the Gold Coast, AZX Group is certainly laying the foundations to become the most significant developer in the country.

azxgroup.com.au

ARCHITECT

Peddle Thorp

PEDDLE THORP

Peddle Thorp Group is an independent company, practising in Architecture, Planning and Interior Design, consisting of a number of business units relating to different markets or specialist areas, with offices in Melbourne, Asia and the Middle East. Peddle Thorp Architects is our commercial architectural arm and the core operation of our office and covers a number of industry sectors including sports architecture, commercial offices, residential & hotels, aquariums, industrial and retail.

Having been in business since the mid 1980s and with staff numbers of over 100 locally and 300+ overseas, we confirm that we have the financial stability, expertise and experience in order to successfully undertake projects of any size or complexity.

pta.com.au



AZX Group



AZX Group



Peddle Thorp, Mangrove Bay



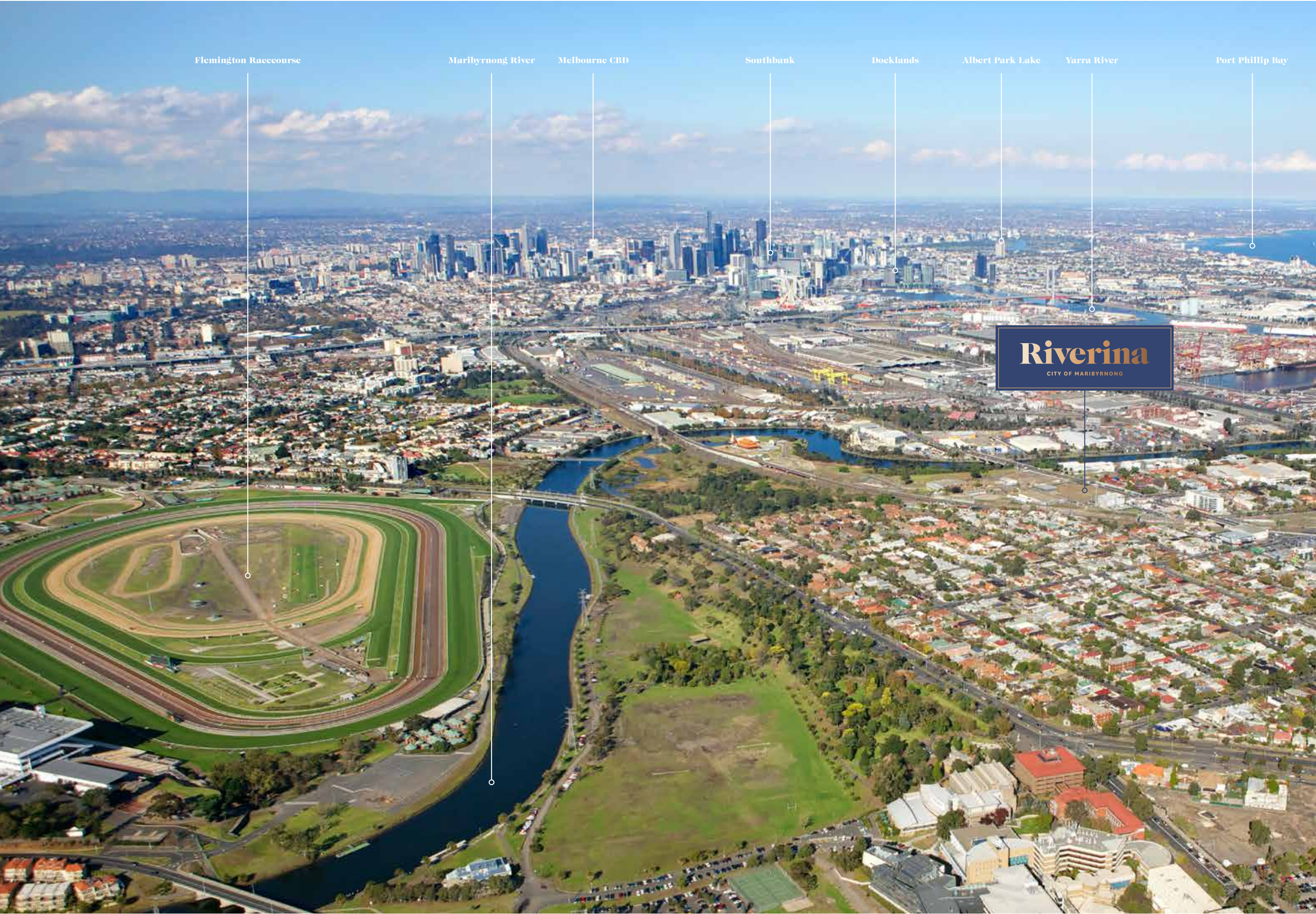
Peddle Thorp, Shuimu Lanshart Estate



Peddle Thorp, Mangrove Bay

Location

RIVERINA



Where the best
things in life collide.

EAT & DRINK

- 01 8bit
- 02 African Taste Café Bar
- 03 Australian Croatian Association
- 04 Café Lalibela
- 05 Common Galaxia
- 06 Footscray Milking Station
- 07 Happy River Café
- 08 Hao Phong
- 09 Ice Bear Frozen Yogurt
- 10 Lentil As Anything
- 11 Little Saigon Supermarket
- 12 Nhulan Bakery
- 13 Olympic Doughnuts
- 14 Plough Hotel
- 15 Roti Road
- 16 Sapa Hills
- 17 Seddon Deadly Sins
- 18 Rockfish
- 19 Sourdough Kitchen
- 20 Station Hotel

PARKS & RECREATION

- 21 Footscray Community Arts Centre
22 Footscray Town Hall
23 Jensen Reserve
24 Lynch's Bridge
25 The Maribyrnong River Trail
26 Newells Paddock Urban Nature Park
27 Sun Theatre
28 Victoria University
Aquatic & Fitness Centre
29 Whitten Oval

SHOPPING

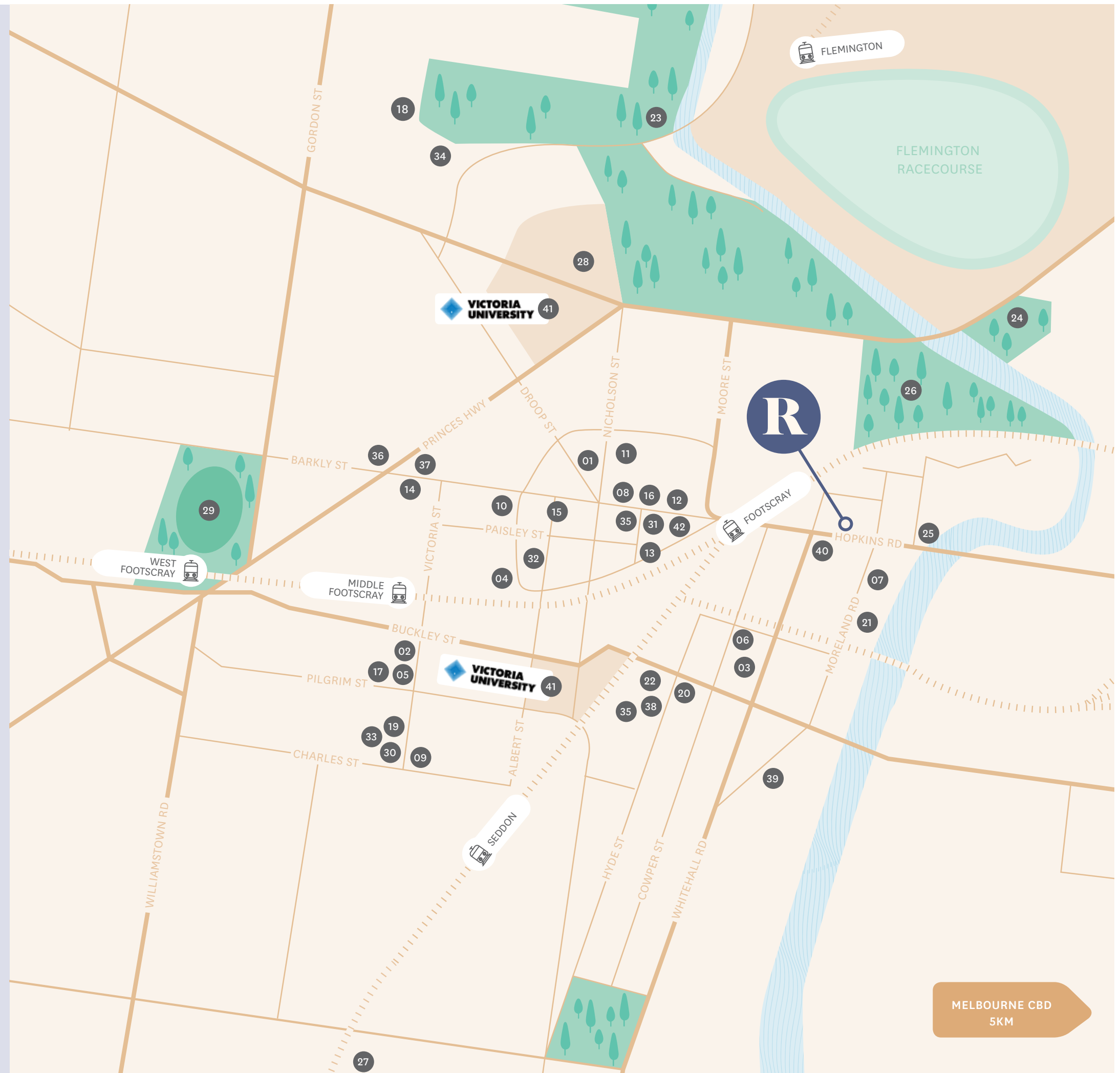
- 30 A. Bongiovanni & Son Grocery Store
31 Footscray Market
32 Footscray Plaza Shopping Centre
33 LoveLuvu

EDUCATION

- 34 Footscray City College
35 Footscray City Primary School
36 Footscray Primary School
37 Gilmore College for Girls
38 Hyde St Kindergarten
39 Strathcona
40 St Monica's Catholic Primary School
41 Victoria University

TRANSPORT

- 42 No 82 Tram



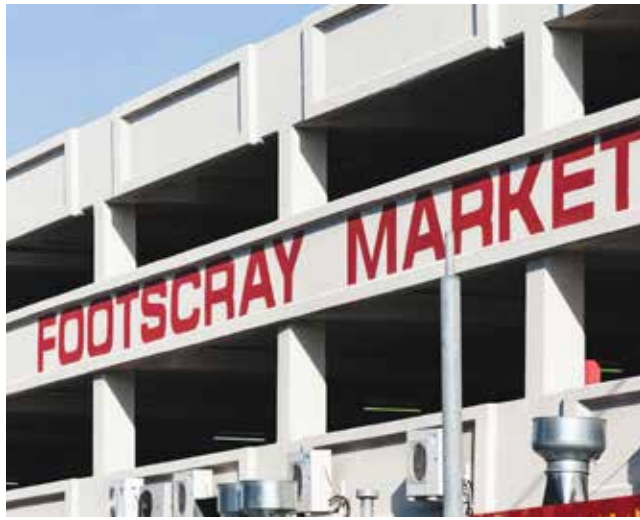
Lifestyle

RIVERINA













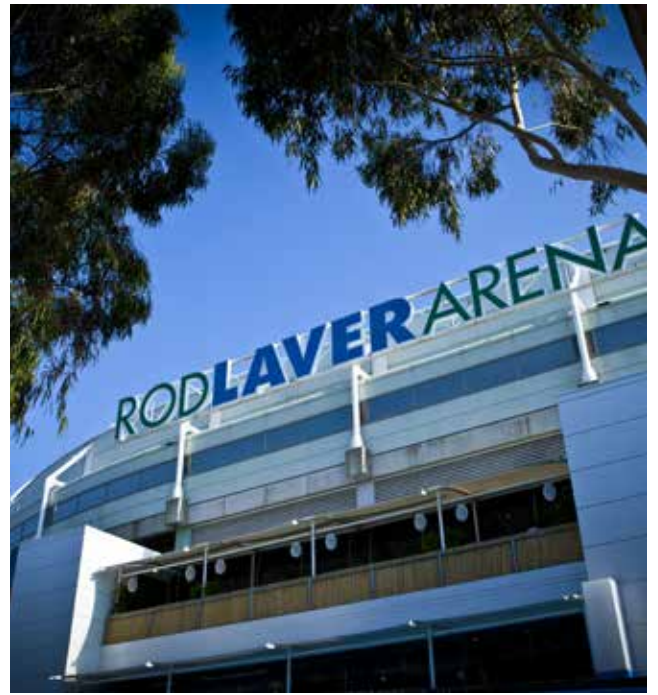
City		
Scheduled	3:49	Departing 9 min
Train		
Line		
Platform		
1 19/14		

Platform 5 / City		Platform 4 / Ballarat / Bendigo	
Lift & ramp access to Platforms 4 & 5	⬅	Stair access to Platforms 4 & 5	⬇
Platforms 1 - 3	⬆	Customer Service (at Platform 1)	⬆
Trams	⬆	Buses	⬆

Lift

4





Architecture

RIVERINA





ARTIST IMPRESSION OF EXTERIOR



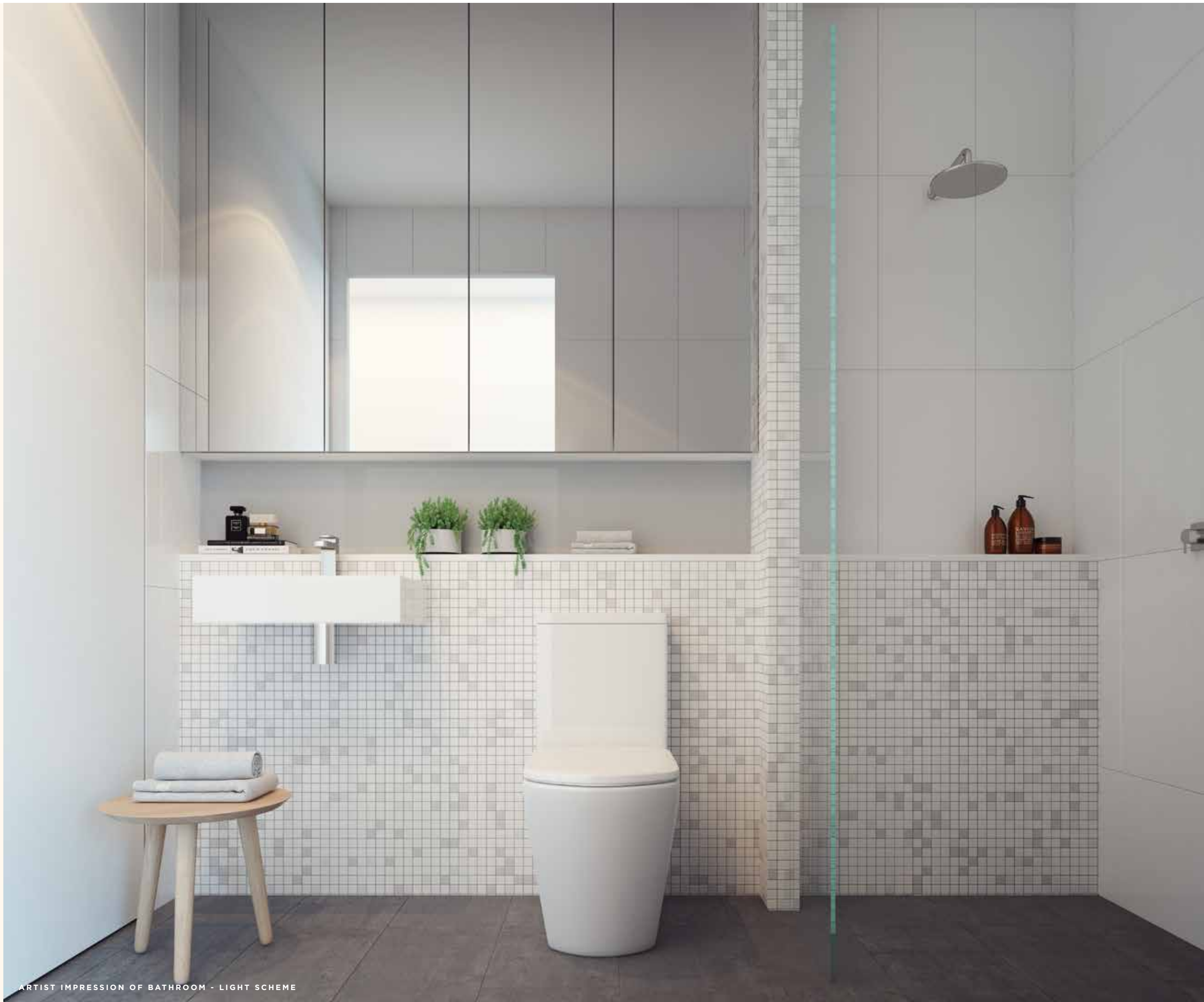




ARTIST IMPRESSION OF KITCHEN - LIGHT SCHEME



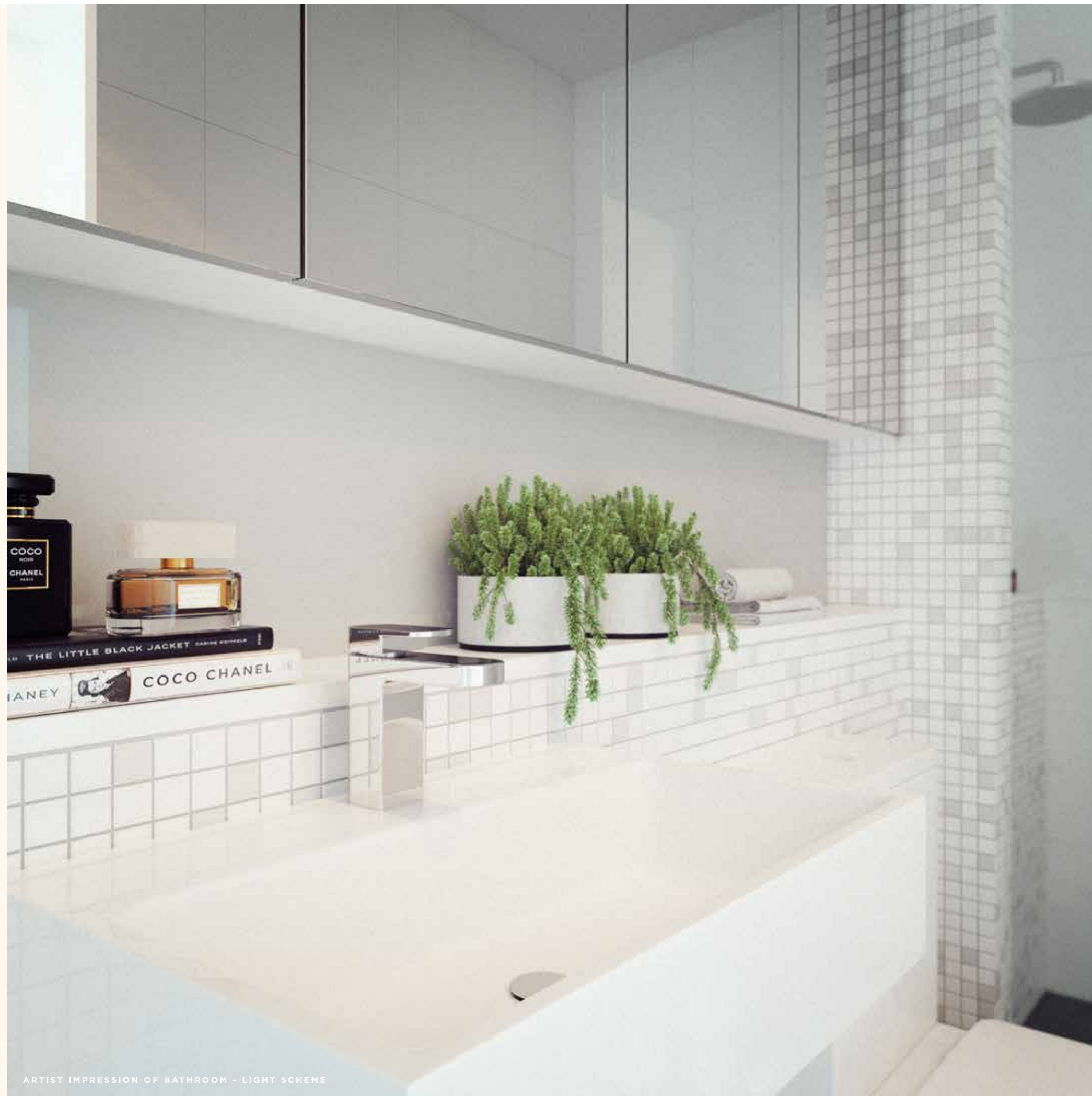
ARTIST IMPRESSION OF LIVING



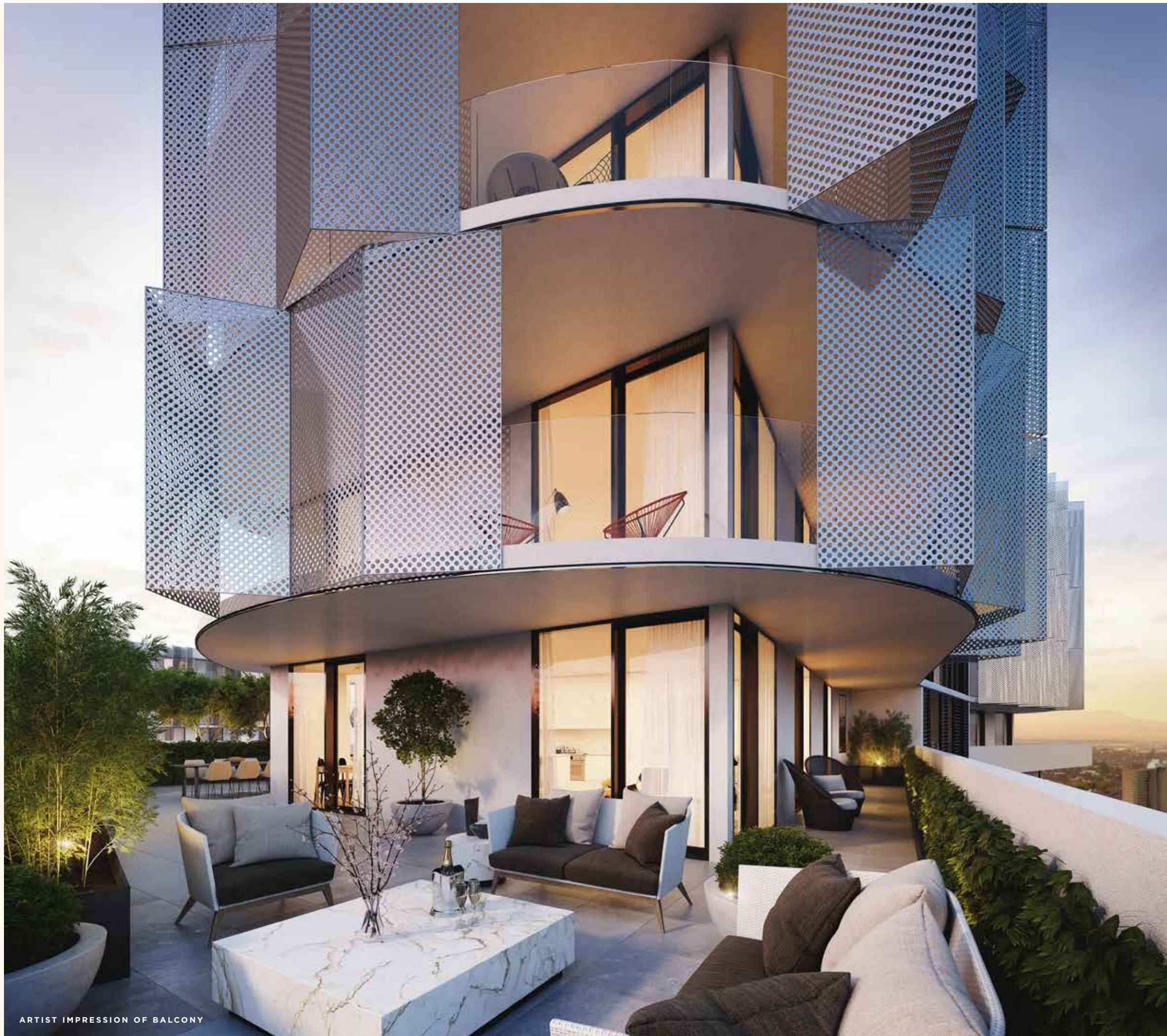
ARTIST IMPRESSION OF BATHROOM - LIGHT SCHEME



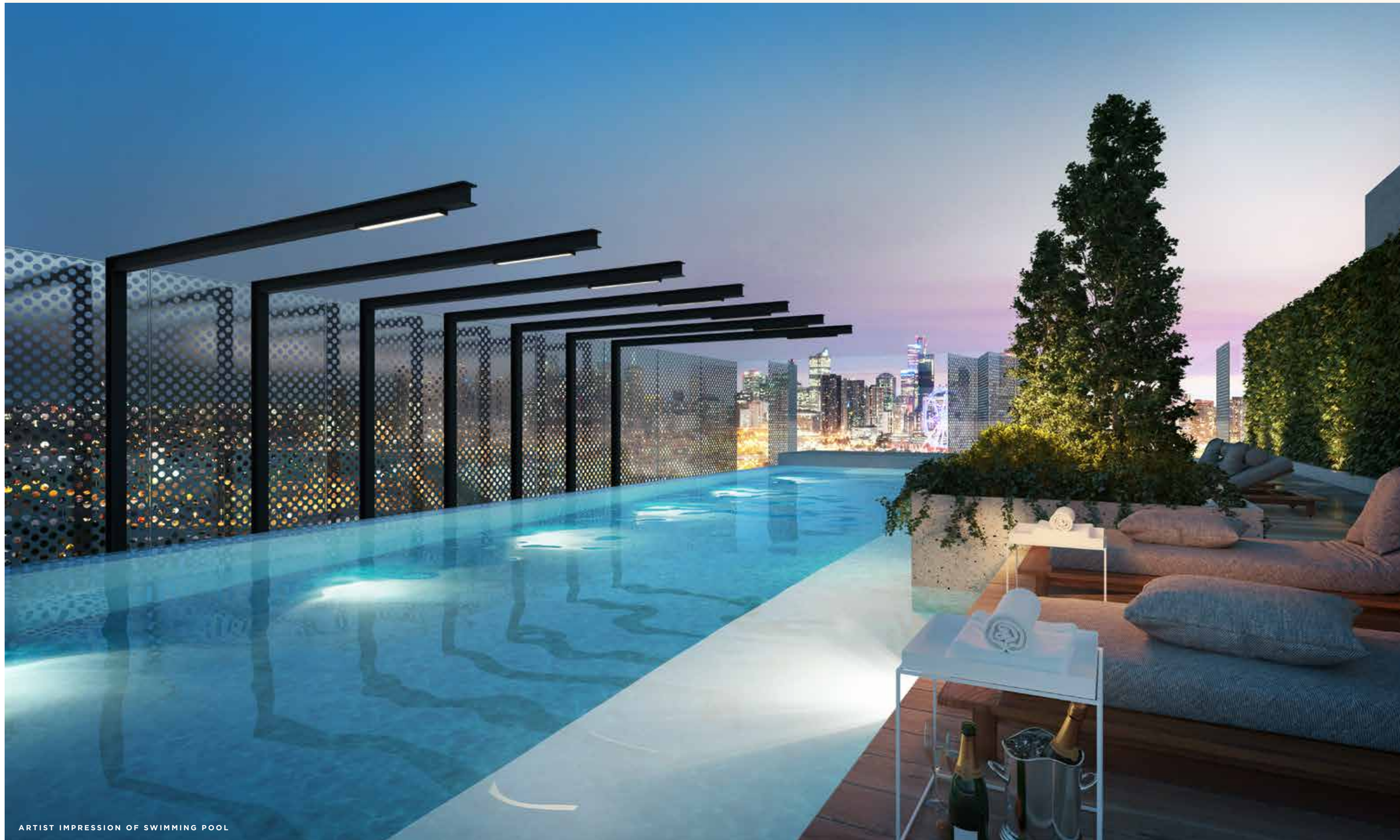
ARTIST IMPRESSION OF BATHROOM - DARK SCHEME



ARTIST IMPRESSION OF BATHROOM - LIGHT SCHEME



ARTIST IMPRESSION OF BALCONY



ARTIST IMPRESSION OF SWIMMING POOL



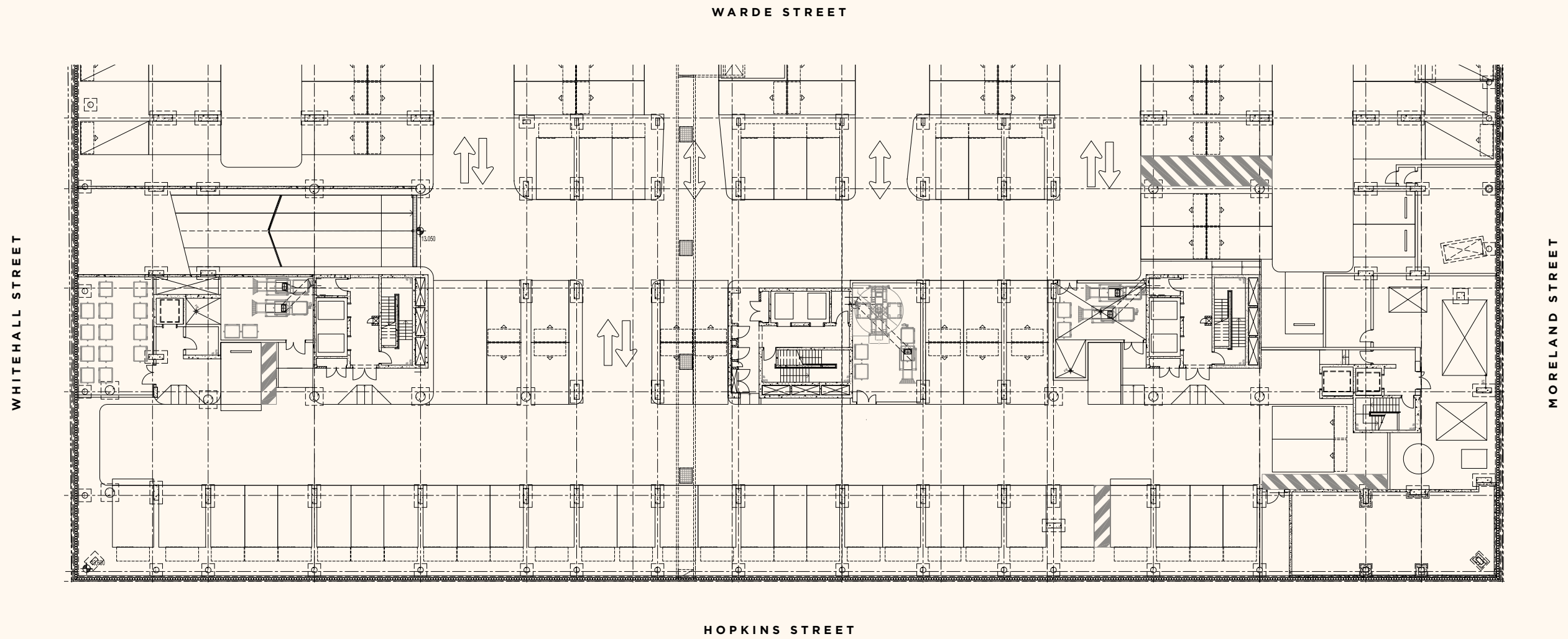
ARTIST IMPRESSION OF EXTERIOR

Floorplates

RIVERINA

Overall Building Layout

TOWER C, D & E



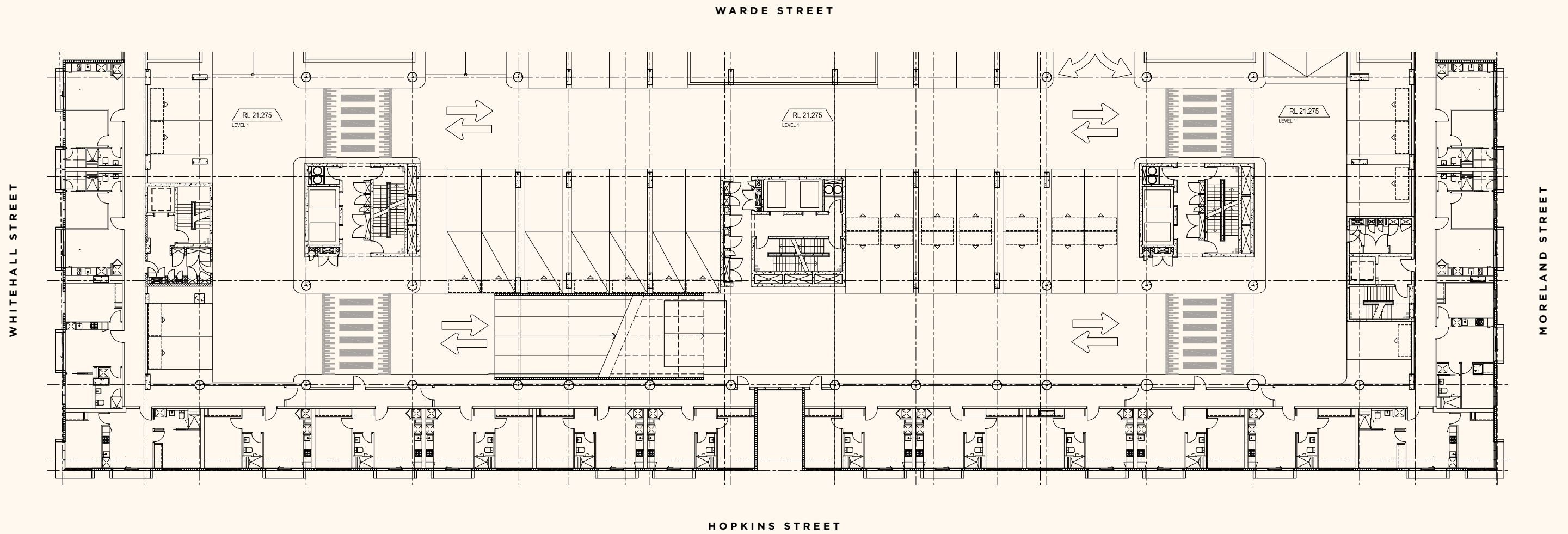


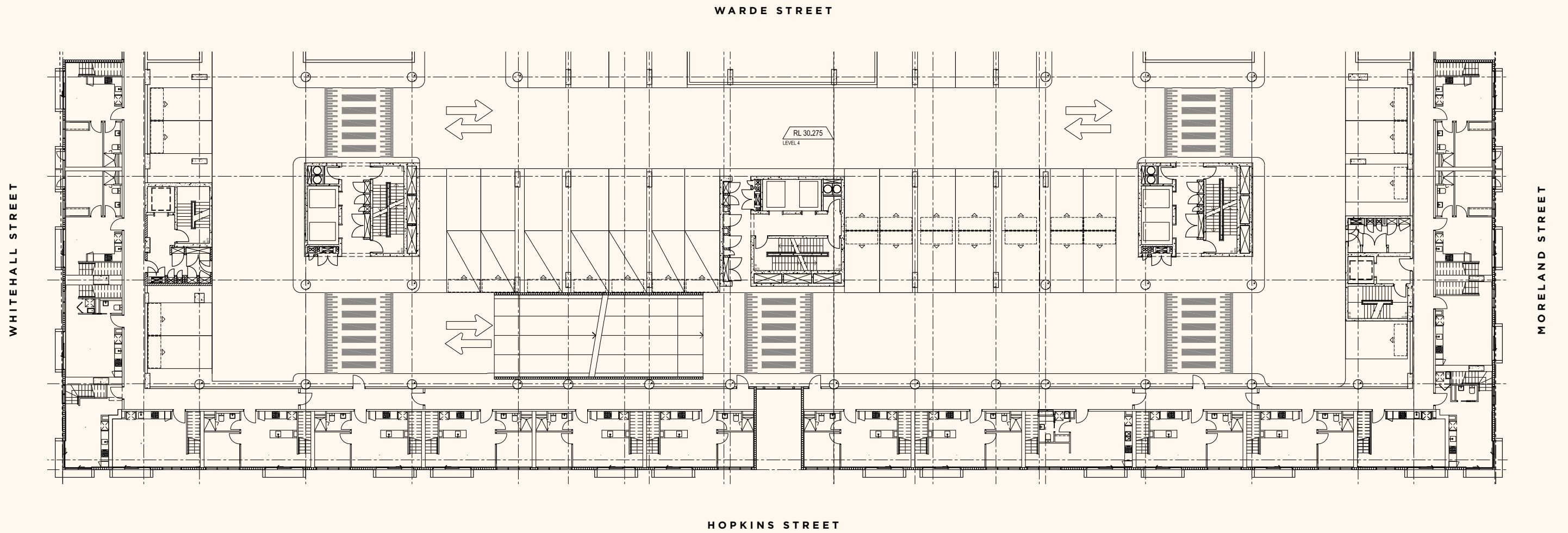
WARDE STREET

WHITEHALL STREET

MORELAND STREET

HOPKINS STREET





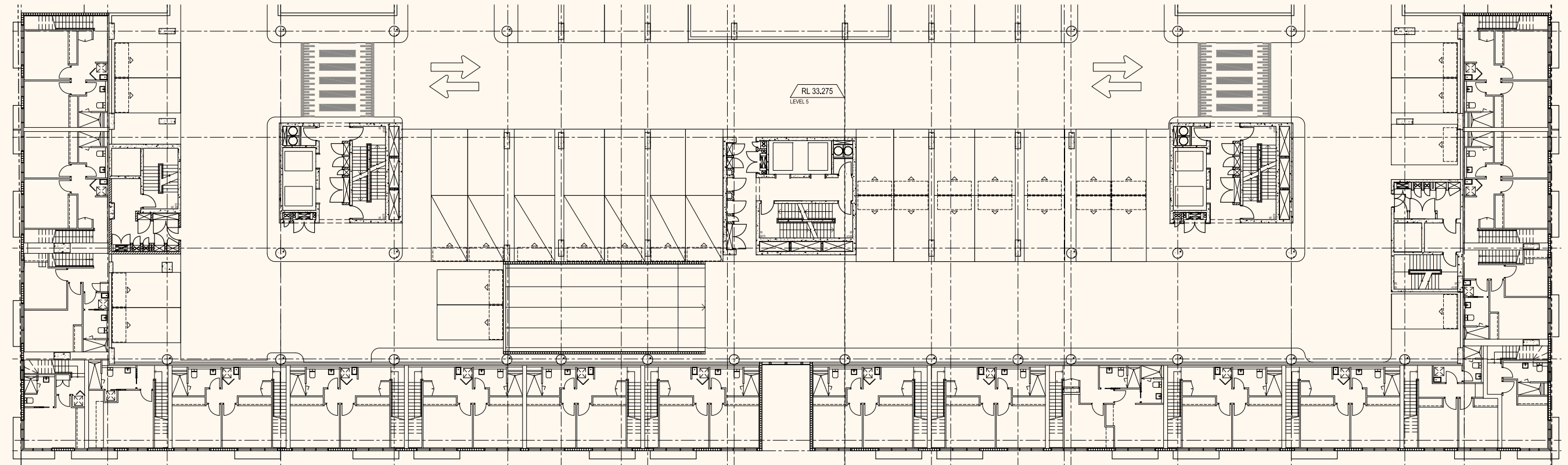


WARDE STREET

WHITEHALL STREET

MORELAND STREET

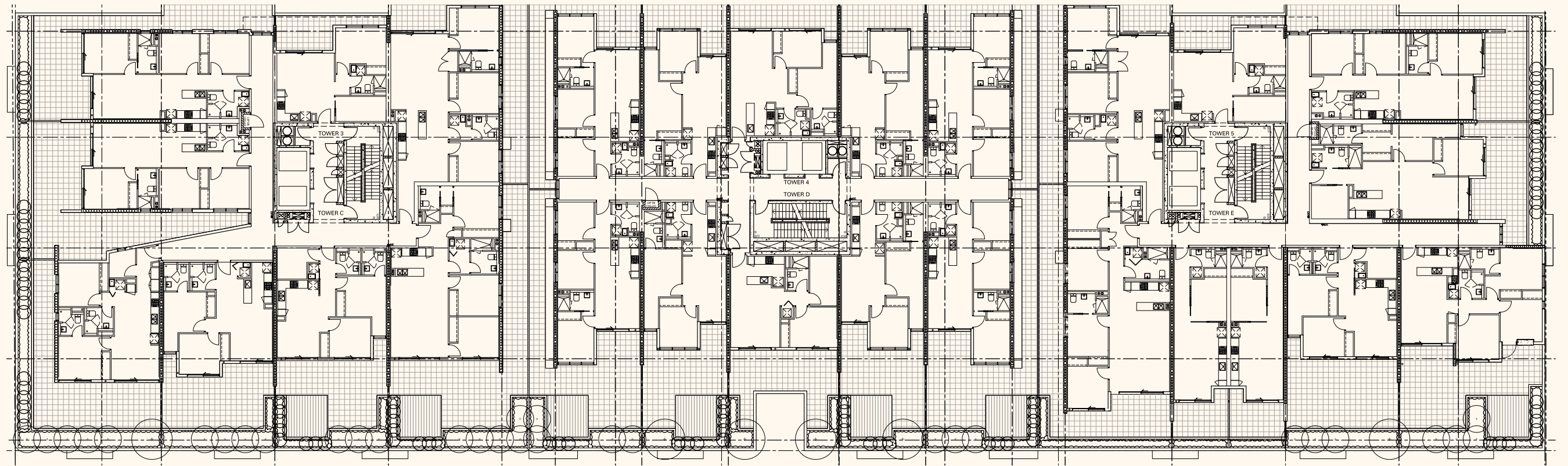
HOPKINS STREET





WARDE STREET

WHITEHALL STREET



MORELAND STREET

HOPKINS STREET

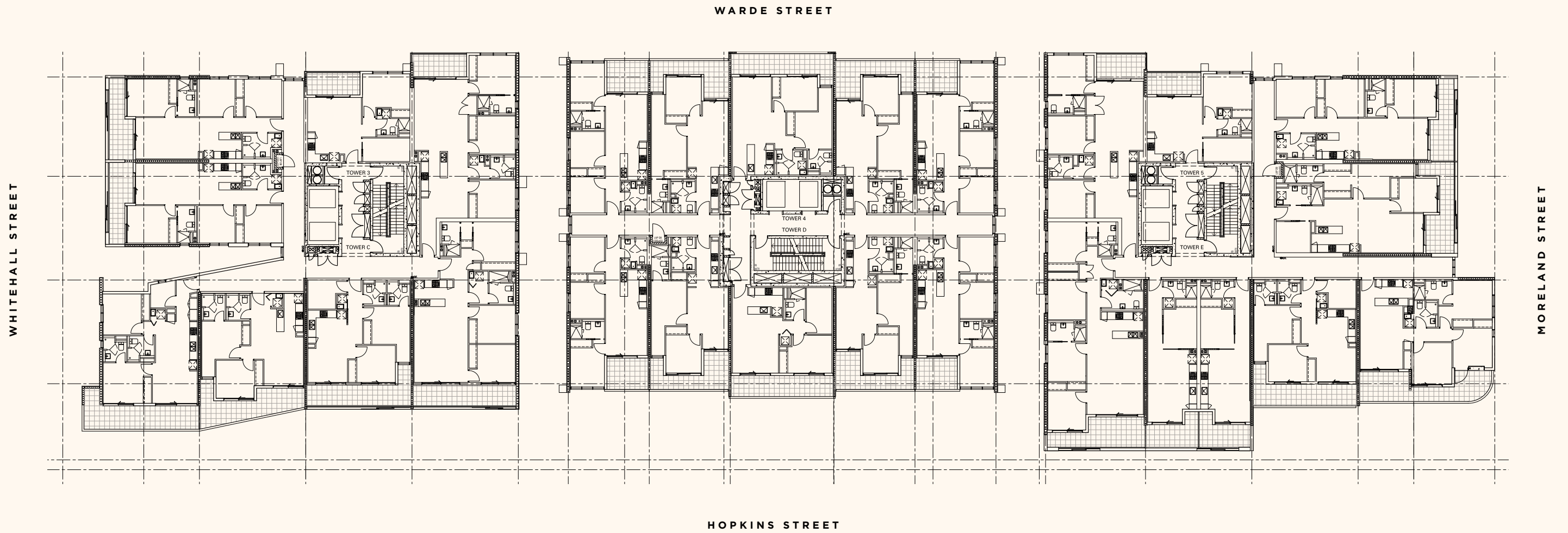


WHITEHALL STREET

WARDE STREET

MORELAND STREET

HOPKINS STREET





WHITEHALL STREET

WARDE STREET

MORELAND STREET

HOPKINS STREET



WHITEHALL STREET

WARDE STREET

MORELAND STREET

HOPKINS STREET



WHITEHALL STREET

WARDE STREET

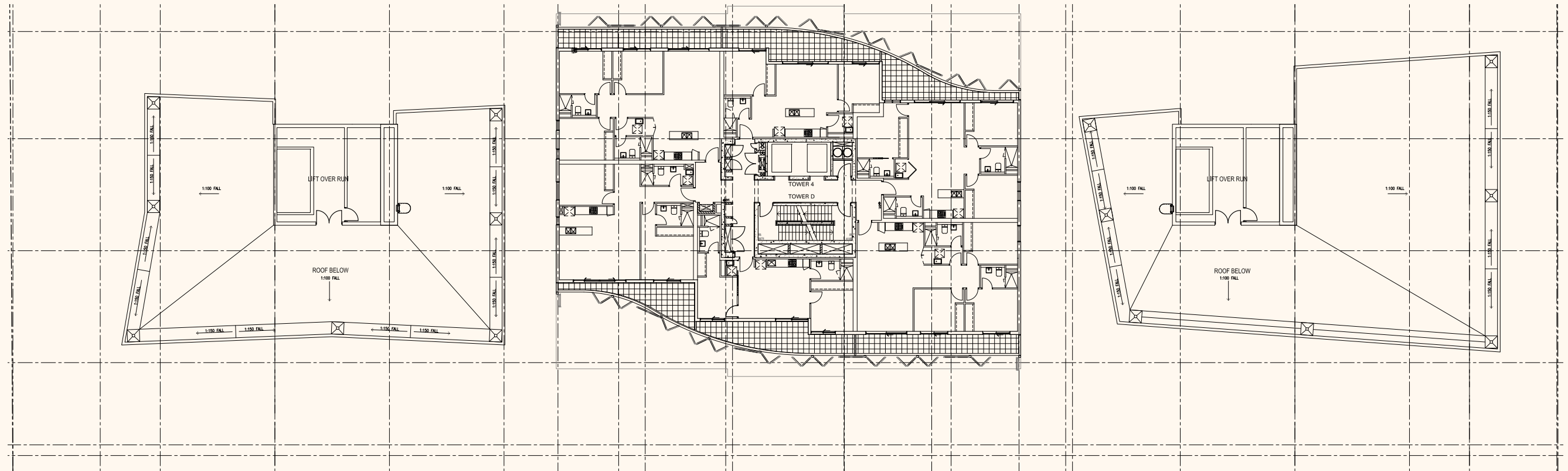
MORELAND STREET

HOPKINS STREET



WARDE STREET

WHITEHALL STREET



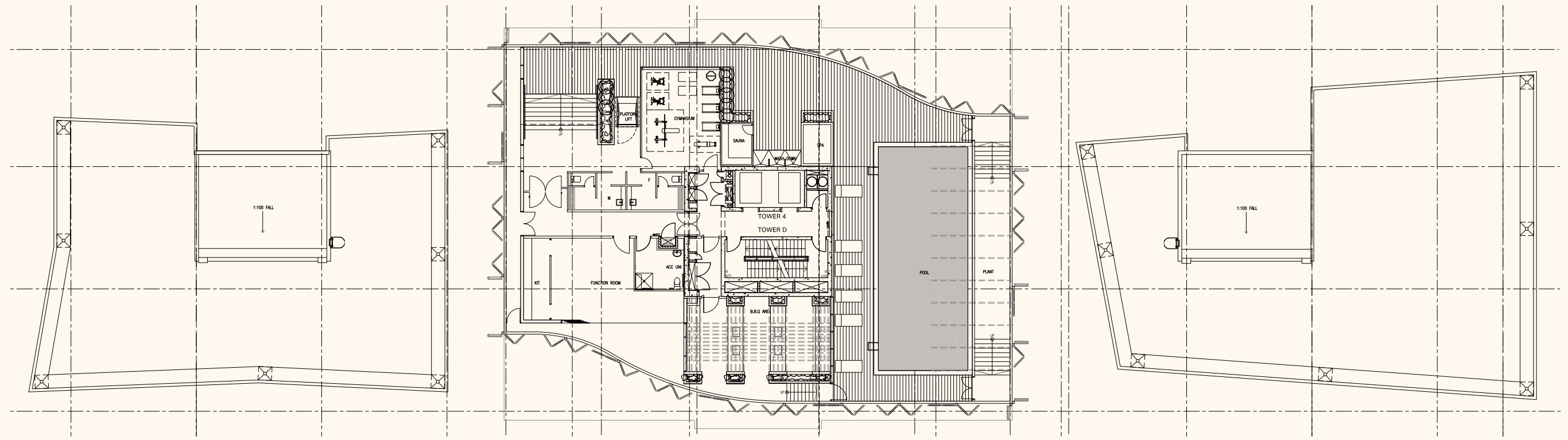
MORELAND STREET

HOPKINS STREET



WHITEHALL STREET

MORELAND STREET



HOPKINS STREET

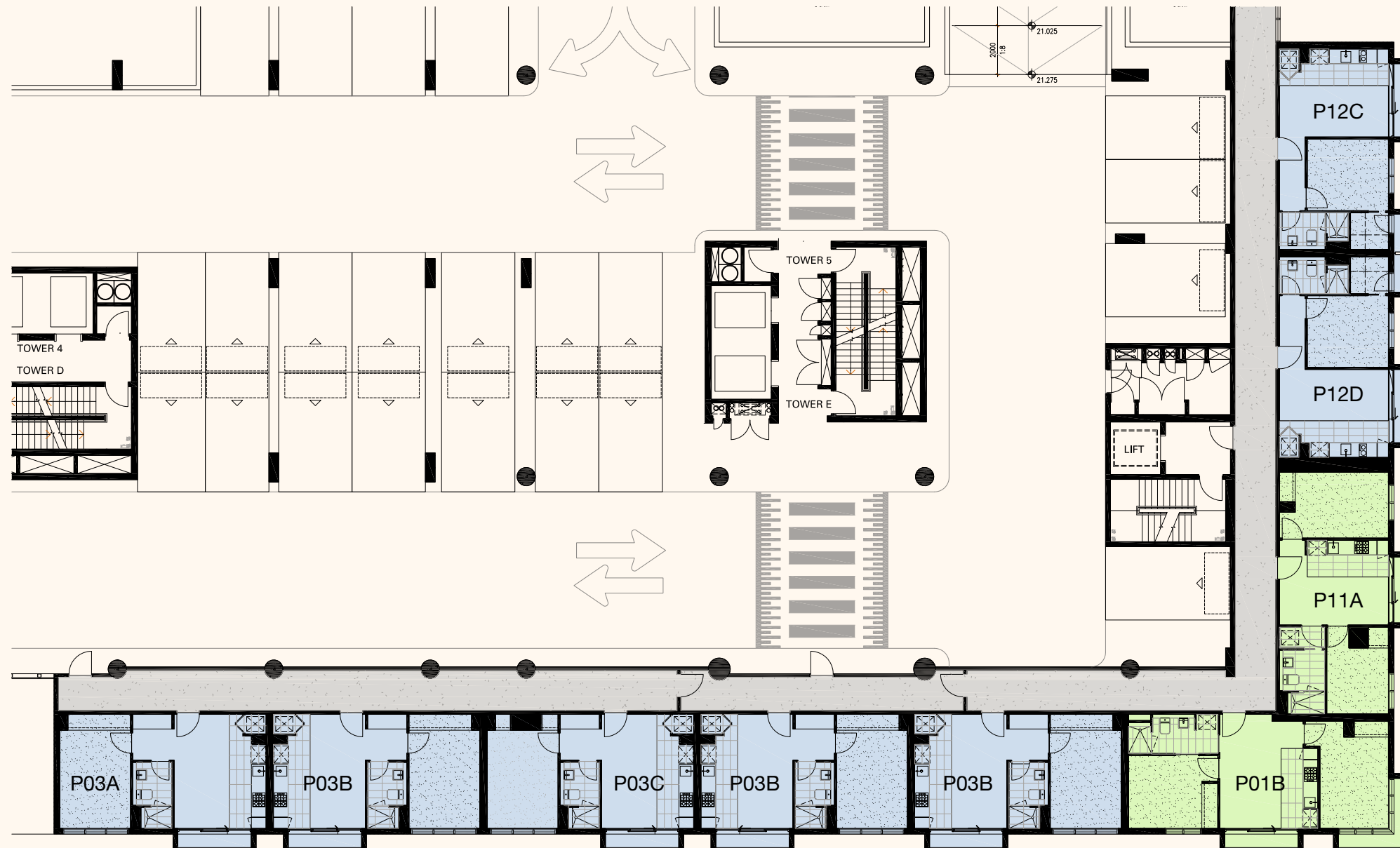
Building E - Podium

LEVEL 1-5 FLOORPLATES

WARDE STREET



WHITEHALL STREET



MORELAND STREET

HOPKINS STREET

Riverina
CITY OF MARIBYRNONG

- 1 BEDROOM
- 1 BED + STUDY
- 2 BEDROOM
- 3 BEDROOM

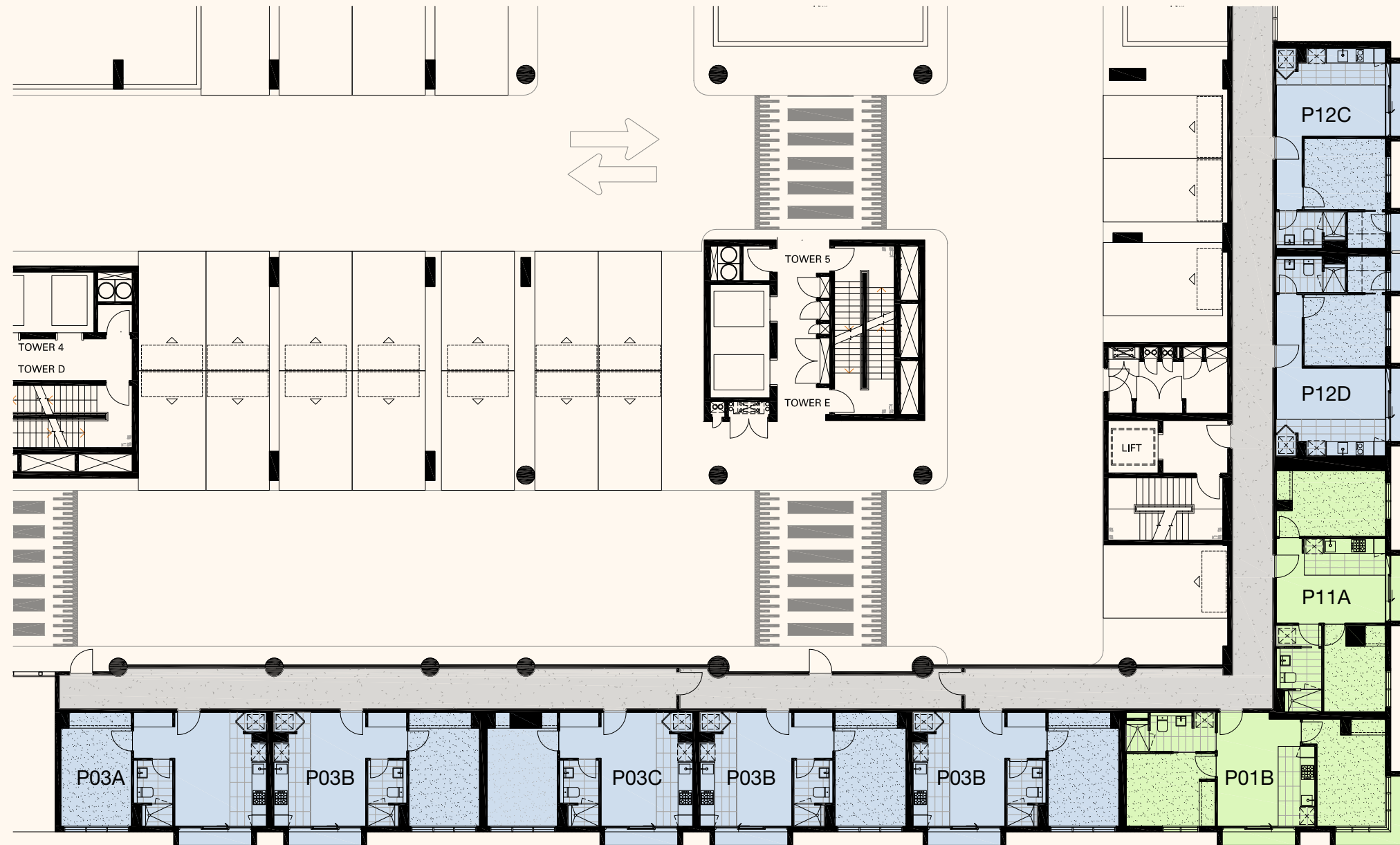
Building E - Podium - Level 1

NOTE. ALL AREAS SHOWN ARE APPROXIMATE. THE INFORMATION CONTAINED HEREIN HAS BEEN OBTAINED FROM SOURCES WE BELIEVE TO BE RELIABLE AND THEREFORE HAVE NO REASON TO DOUBT IT'S ACCURACY. THE VENDOR AND IT'S AGENT WILL NOT BE RESPONSIBLE FOR ANY ERROR OR MIS-DESCRIPTION WHICH MAY APPEAR. PROSPECTIVE PURCHASERS OR LEASEES ARE THEREFORE ADVISED TO MAKE WHATEVER INVESTIGATIONS THEY DEEM NECESSARY.

WARDE STREET



WHITEHALL STREET



MORELAND STREET

HOPKINS STREET

Riverina
CITY OF MARIBYRNONG

- 1 BEDROOM
- 1 BED + STUDY
- 2 BEDROOM
- 3 BEDROOM

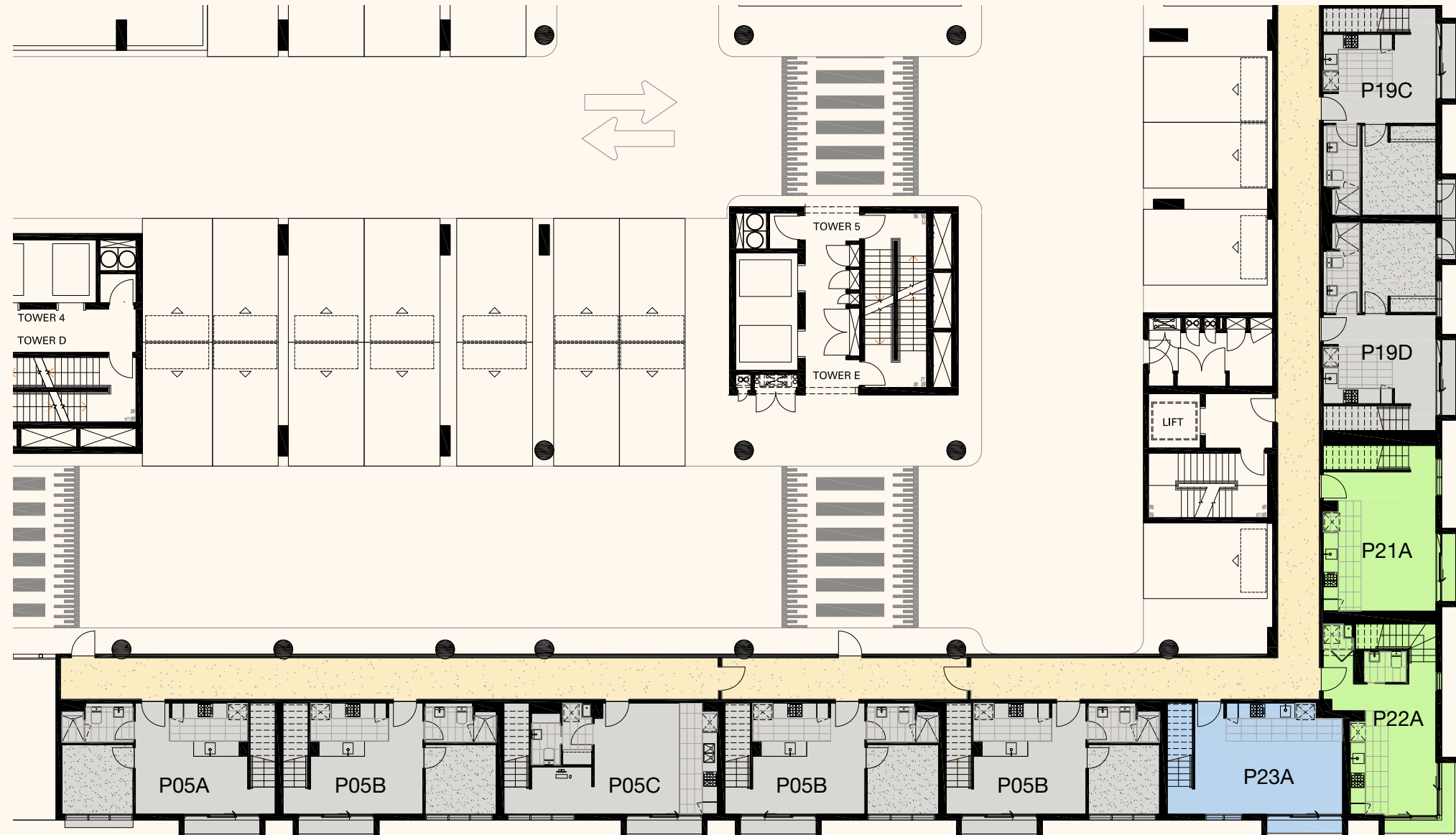
Building E - Podium - Level 2-3

NOTE. ALL AREAS SHOWN ARE APPROXIMATE. THE INFORMATION CONTAINED HEREIN HAS BEEN OBTAINED FROM SOURCES WE BELIEVE TO BE RELIABLE AND THEREFORE HAVE NO REASON TO DOUBT IT'S ACCURACY. THE VENDOR AND IT'S AGENT WILL NOT BE RESPONSIBLE FOR ANY ERROR OR MIS-DESCRIPTION WHICH MAY APPEAR. PROSPECTIVE PURCHASERS OR LEASEES ARE THEREFORE ADVISED TO MAKE WHATEVER INVESTIGATIONS THEY DEEM NECESSARY.

WARDE STREET



WHITEHALL STREET



MORELAND STREET

HOPKINS STREET

Riverina
CITY OF MARIBYRNONG

- 1 BEDROOM
- 1 BED + STUDY
- 2 BEDROOM
- 3 BEDROOM

Building E - Podium - Level 4

NOTE. ALL AREAS SHOWN ARE APPROXIMATE. THE INFORMATION CONTAINED HEREIN HAS BEEN OBTAINED FROM SOURCES WE BELIEVE TO BE RELIABLE AND THEREFORE HAVE NO REASON TO DOUBT IT'S ACCURACY. THE VENDOR AND IT'S AGENT WILL NOT BE RESPONSIBLE FOR ANY ERROR OR MIS-DESCRIPTION WHICH MAY APPEAR. PROSPECTIVE PURCHASERS OR LEASEES ARE THEREFORE ADVISED TO MAKE WHATEVER INVESTIGATIONS THEY DEEM NECESSARY.

WARDE STREET



WHITEHALL STREET



MORELAND STREET

HOPKINS STREET

Riverina
CITY OF MARIBYRNONG

- 1 BEDROOM
- 1 BED + STUDY
- 2 BEDROOM
- 3 BEDROOM

Building E - Podium - Level 5

NOTE: ALL AREAS SHOWN ARE APPROXIMATE. THE INFORMATION CONTAINED HEREIN HAS BEEN OBTAINED FROM SOURCES WE BELIEVE TO BE RELIABLE AND THEREFORE HAVE NO REASON TO DOUBT IT'S ACCURACY. THE VENDOR AND IT'S AGENT WILL NOT BE RESPONSIBLE FOR ANY ERROR OR MIS-DESCRIPTION WHICH MAY APPEAR. PROSPECTIVE PURCHASERS OR LEASEES ARE THEREFORE ADVISED TO MAKE WHATEVER INVESTIGATIONS THEY DEEM NECESSARY.

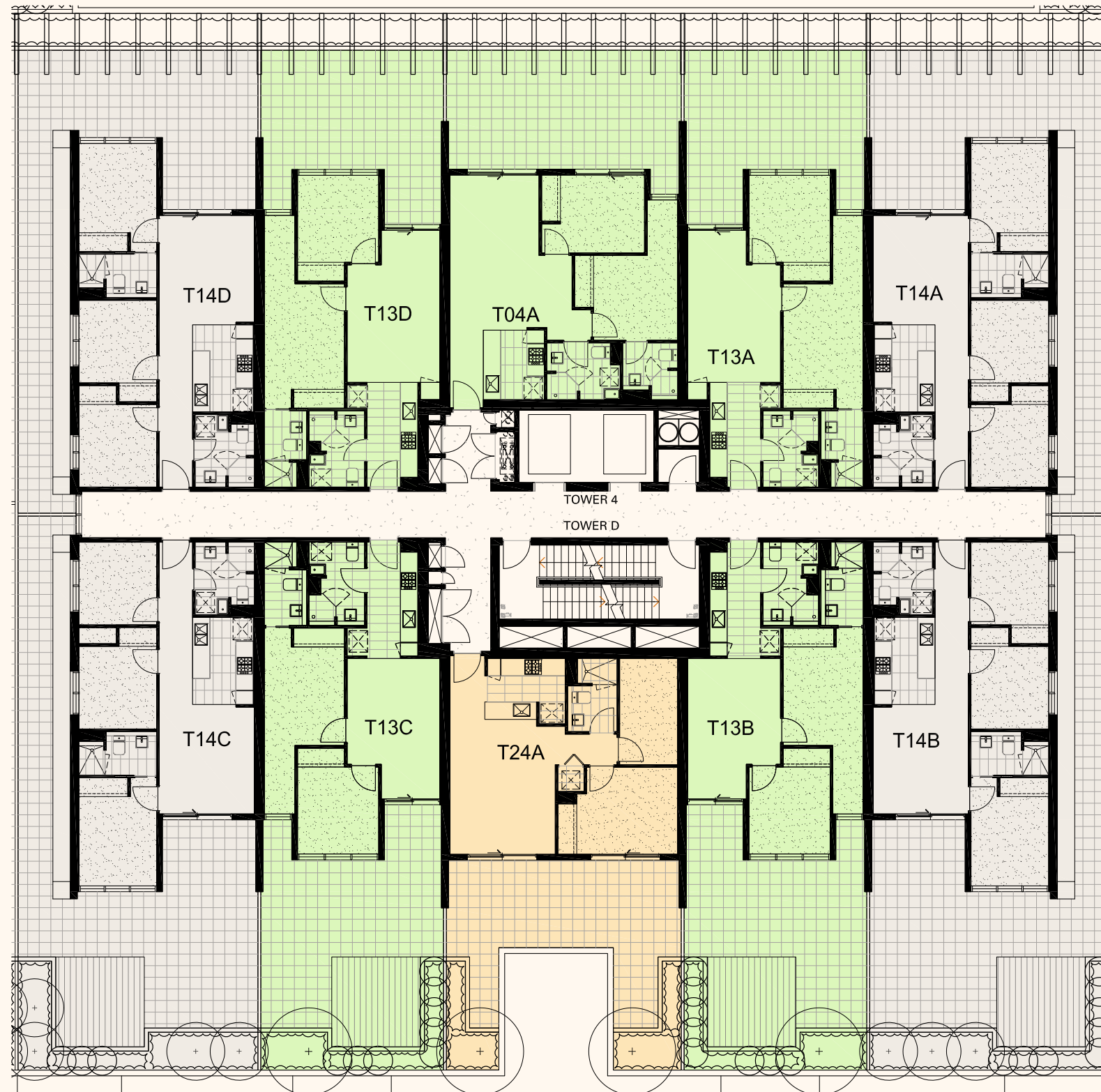
Building D - Tower

LEVEL 6-17 FLOORPLATES

WARDE STREET



WHITEHALL STREET



MORELAND STREET

HOPKINS STREET

WARDE STREET



WHITEHALL STREET



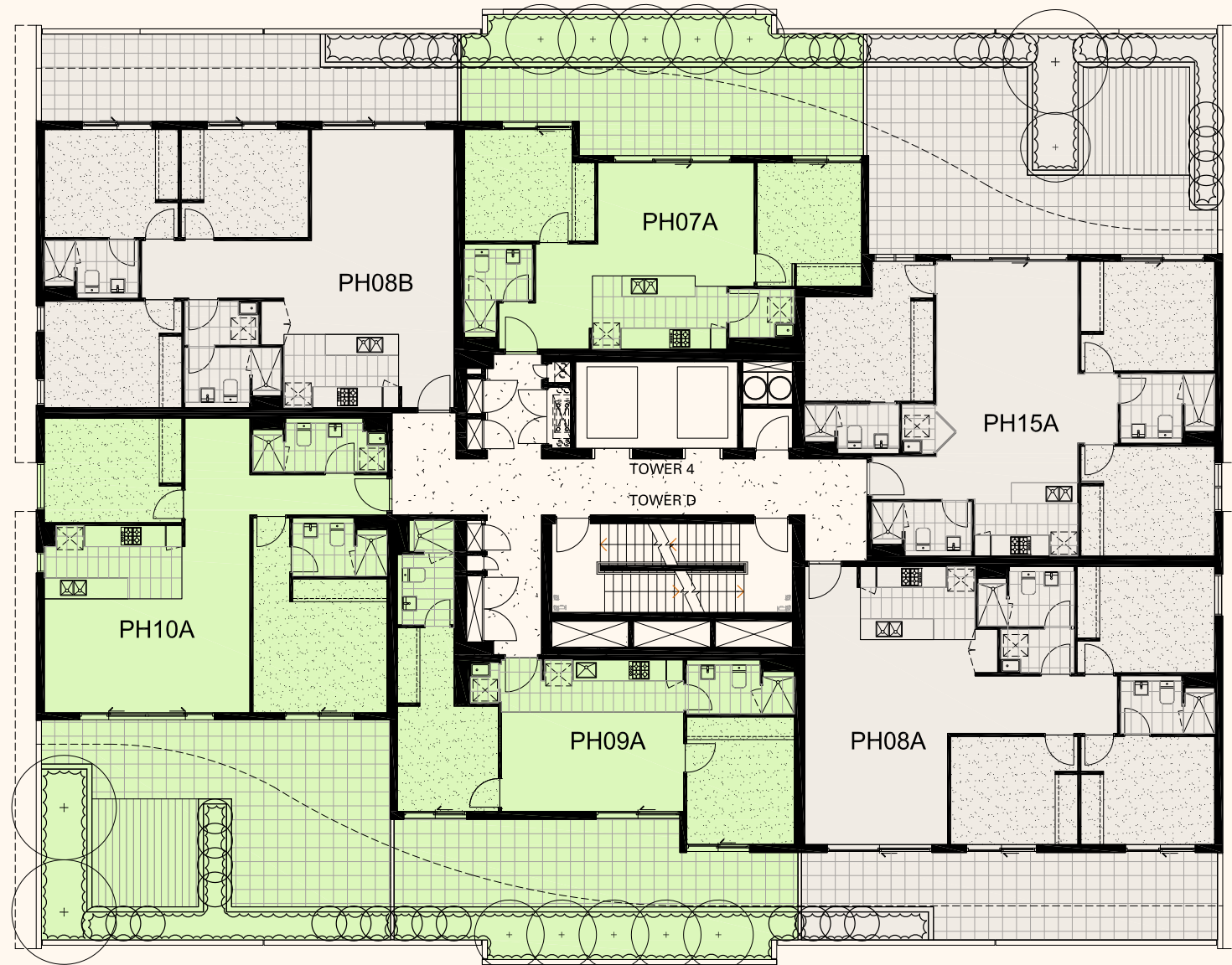
MORELAND STREET

HOPKINS STREET

WARDE STREET



WHITEHALL STREET



MORELAND STREET

HOPKINS STREET

Riverina
CITY OF MARIBYRNONG

- 1 BEDROOM
- 1 BED + STUDY
- 2 BEDROOM
- 3 BEDROOM

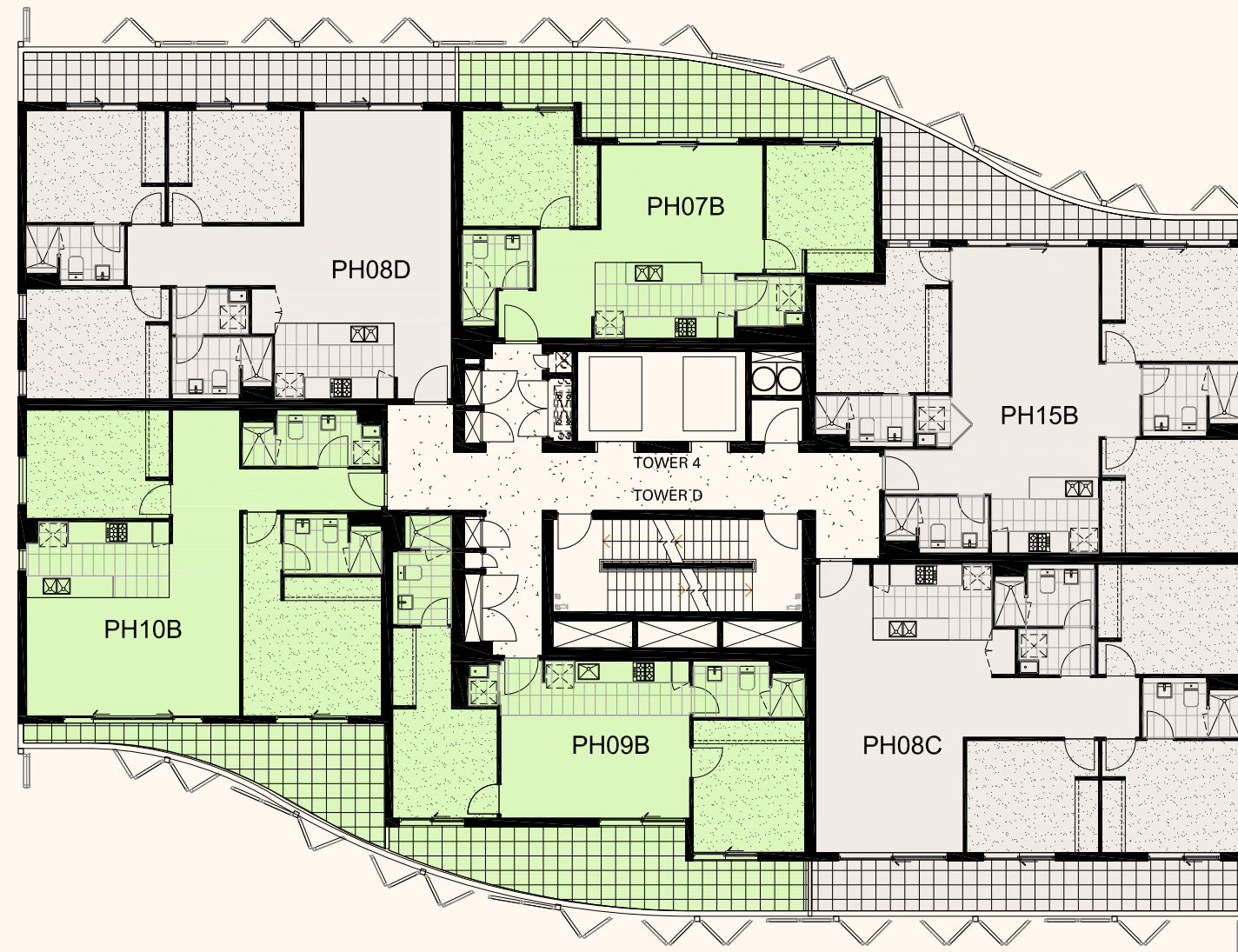
Building D - Tower - Level 16

NOTE: ALL AREAS SHOWN ARE APPROXIMATE. THE INFORMATION CONTAINED HEREIN HAS BEEN OBTAINED FROM SOURCES WE BELIEVE TO BE RELIABLE AND THEREFORE HAVE NO REASON TO DOUBT IT'S ACCURACY. THE VENDOR AND IT'S AGENT WILL NOT BE RESPONSIBLE FOR ANY ERROR OR MIS-DESCRIPTION WHICH MAY APPEAR. PROSPECTIVE PURCHASERS OR LEASEES ARE THEREFORE ADVISED TO MAKE WHATEVER INVESTIGATIONS THEY DEEM NECESSARY.

WARDE STREET



WHITEHALL STREET



MORELAND STREET

HOPKINS STREET

Riverina
CITY OF MARIBYRNONG

- 1 BEDROOM
- 1 BED + STUDY
- 2 BEDROOM
- 3 BEDROOM

Building D - Tower - Level 17

NOTE. ALL AREAS SHOWN ARE APPROXIMATE. THE INFORMATION CONTAINED HEREIN HAS BEEN OBTAINED FROM SOURCES WE BELIEVE TO BE RELIABLE AND THEREFORE HAVE NO REASON TO DOUBT IT'S ACCURACY. THE VENDOR AND IT'S AGENT WILL NOT BE RESPONSIBLE FOR ANY ERROR OR MIS-DESCRIPTION WHICH MAY APPEAR. PROSPECTIVE PURCHASERS OR LEASEES ARE THEREFORE ADVISED TO MAKE WHATEVER INVESTIGATIONS THEY DEEM NECESSARY.

Building E - Tower

LEVEL 6-17 FLOORPLATES

WARDE STREET



WHITEHALL STREET



MORELAND STREET

HOPKINS STREET

WARDE STREET



WHITEHALL STREET



MORELAND STREET

HOPKINS STREET

Riverina
CITY OF MARIBYRNONG



1 BEDROOM



1 BED + STUDY



2 BEDROOM



2 BED + STUDY



3 BEDROOM

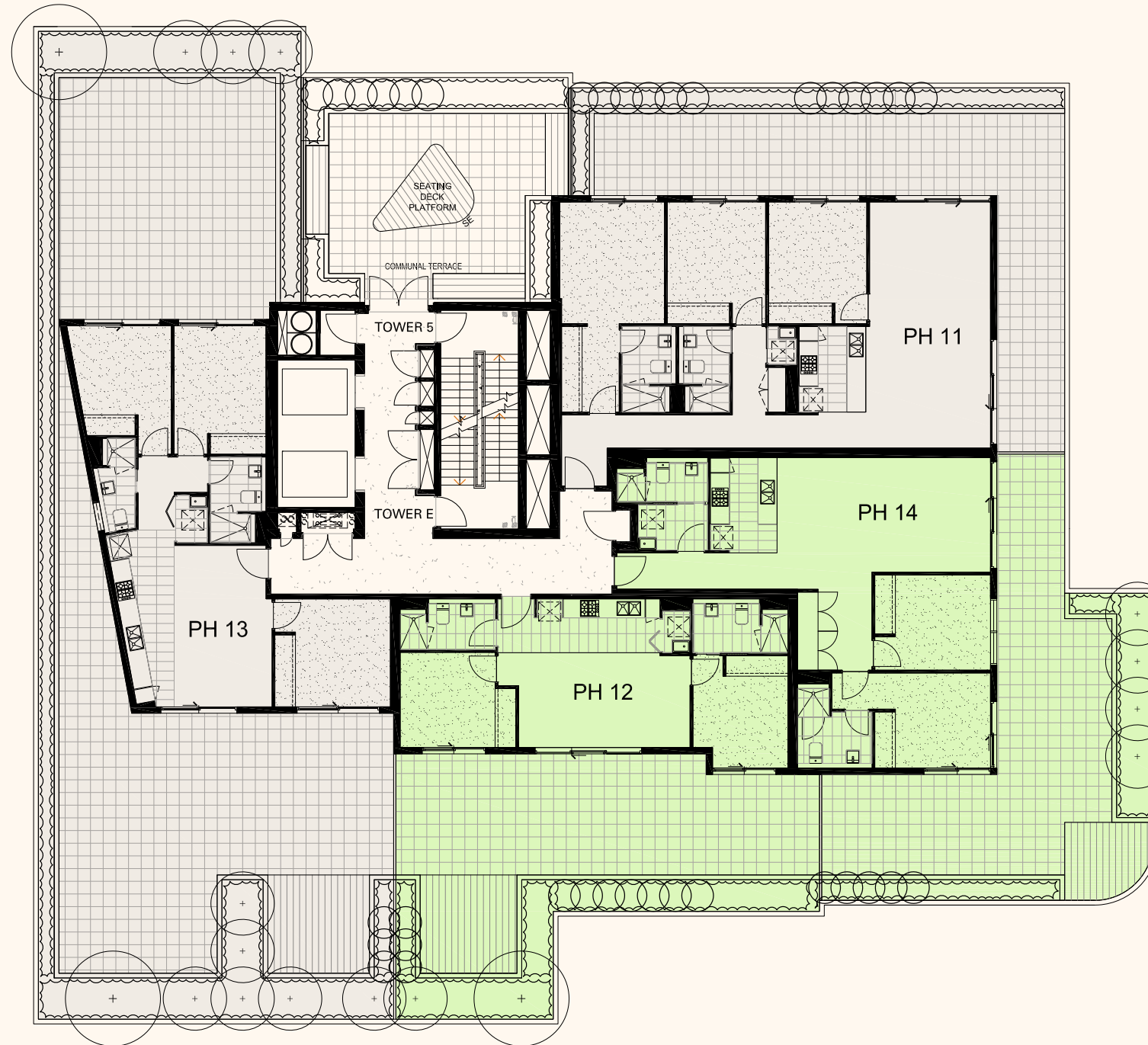
Building E - Tower - Level 7-15

NOTE. ALL AREAS SHOWN ARE APPROXIMATE. THE INFORMATION CONTAINED HEREIN HAS BEEN OBTAINED FROM SOURCES WE BELIEVE TO BE RELIABLE AND THEREFORE HAVE NO REASON TO DOUBT IT'S ACCURACY. THE VENDOR AND IT'S AGENT WILL NOT BE RESPONSIBLE FOR ANY ERROR OR MIS-DESCRIPTION WHICH MAY APPEAR. PROSPECTIVE PURCHASERS OR LEASEES ARE THEREFORE ADVISED TO MAKE WHATEVER INVESTIGATIONS THEY DEEM NECESSARY.

WARDE STREET



WHITEHALL STREET



MORELAND STREET

HOPKINS STREET

Riverina
CITY OF MARIBYRNONG

- 1 BEDROOM
- 1 BED + STUDY
- 2 BEDROOM
- 2 BED + STUDY
- 3 BEDROOM

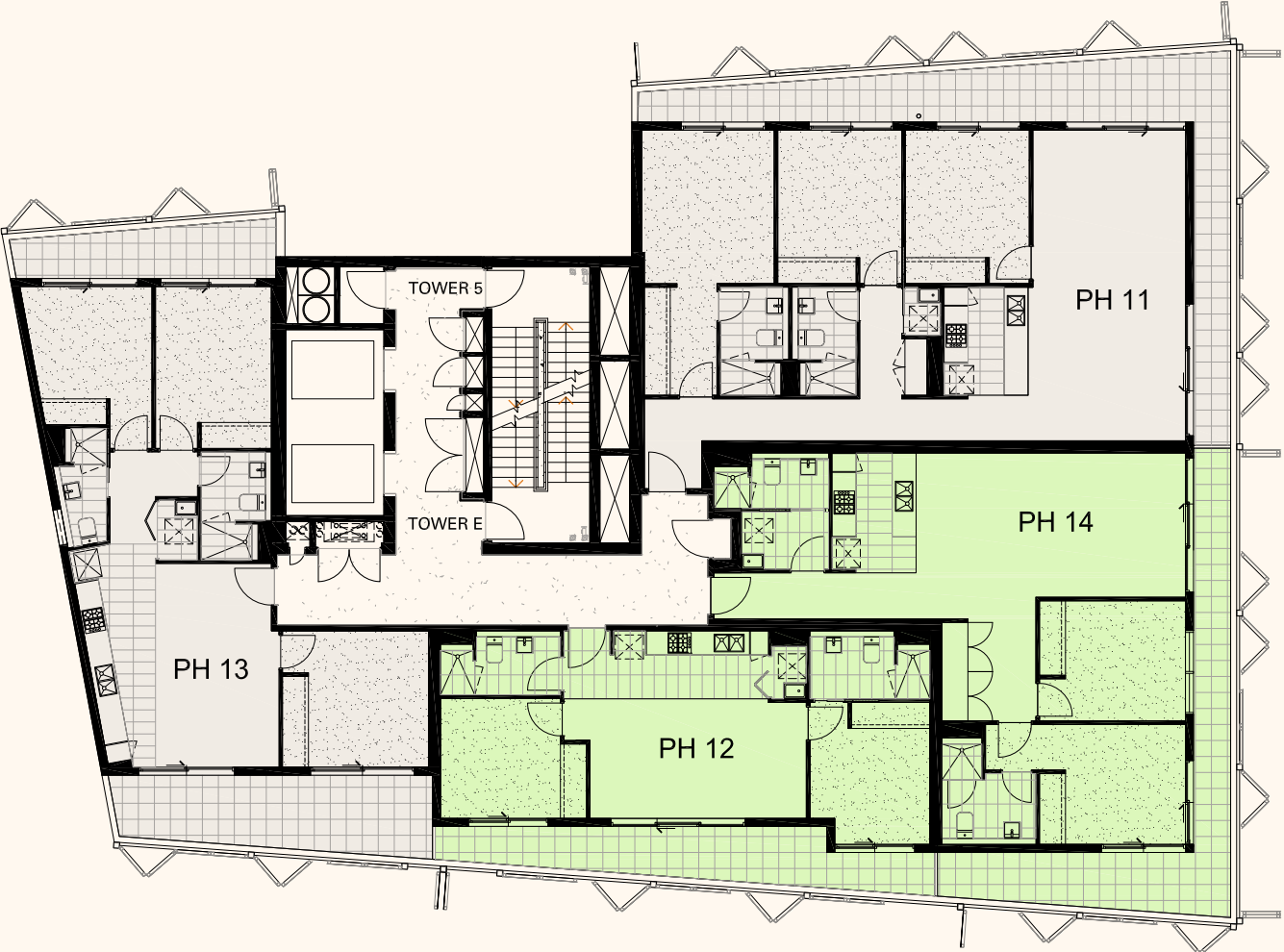
Building E - Tower - Level 16

NOTE. ALL AREAS SHOWN ARE APPROXIMATE. THE INFORMATION CONTAINED HEREIN HAS BEEN OBTAINED FROM SOURCES WE BELIEVE TO BE RELIABLE AND THEREFORE HAVE NO REASON TO DOUBT IT'S ACCURACY. THE VENDOR AND IT'S AGENT WILL NOT BE RESPONSIBLE FOR ANY ERROR OR MIS-DESCRIPTION WHICH MAY APPEAR. PROSPECTIVE PURCHASERS OR LEASEES ARE THEREFORE ADVISED TO MAKE WHATEVER INVESTIGATIONS THEY DEEM NECESSARY.

WARDE STREET



WHITEHALL STREET



MORELAND STREET

HOPKINS STREET



1 BEDROOM



1 BED + STUDY



2 BEDROOM



2 BED + STUDY



3 BEDROOM