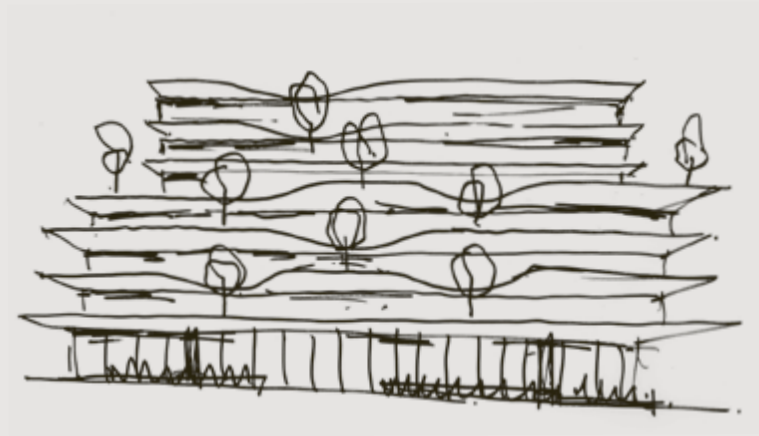


A N O D E T O T H E H O M E  
T H E P L A C E S W E E S C A P E I N  
M A K E B R E A K F A S T I N  
S H A R E M E A L S I N  
D R E A M L O N G I N  
F I N D E X P R E S S I O N I N  
S E E K Q U I E T I N  
T A K E T I M E I N  
E X P E R I E N C E L I F E I N  
T H E P L A C E S W E L I V E I N

**V I C T O R I A H I L L**

THE RESIDENCES



VICTORIA HILL  
THE RESIDENCES



## W E L C O M E

Victoria Hill is a personal passion project for me that comes from over 35 years of playing, learning, eating and enjoying every aspect of living in Melbourne's beautiful inner east.

Few locations can consider themselves truly rare. Perched atop Camberwell's highest point, with the locale's rich tapestry unfolding around it and views to the city skyline and Dandenong Ranges beyond, Victoria Hill is this and more.

Our team has delivered award winning projects in the most prestigious suburbs of Melbourne and Sydney. It is a privilege to bring all of our design, material and delivery expertise and ideas to this glorious project. We are proud of the culmination of all these aspects in our Victoria Hill development.

The Residences at Victoria Hill mediate between those quintessential characteristics that make this inner-east location so coveted — its tree lined streets, affluent heritage and grand scale homes — shifting them to meet discerning expectations on contemporary living and the priorities of modern life.

As a local resident and developer, I recognise the singularity of this site and the importance of cultivating it to enhance the neighbourhood for all. I believe there is no other residential offer that can compare to Victoria Hill in terms of size, detailing and meticulous attention to detail.

Together with our partners we look forward to creating a new expression of home, filled with the understated character, craftsmanship and detail that has always placed Camberwell homes firmly in the hearts of all Victorians.

Welcome home to Victoria Hill.

Tim Price  
Founder, Time & Place



VICTORIA HILL, Artist impression

A N  
O D E  
T O  
H O M E

In homage to the enduring charm, ornamentation and warmth of the classic Victorian, an evolution has brought you here, a journey that pauses to gather in the spacious sanctuary of a home that rises out of heritage to define cultured liveability. Here, now, and beyond, Victoria Hill resurrects the traditional Victorian for modern lifestyles.

A timeless luxury development from Time & Place and Cera Stribley, Victoria Hill has been envisioned as a modern Victorian which reinstates the proportions of the grand dwellings of the Camberwell area alongside a refined design palette shaped by your personal style.

Each of the 26 Residences, meticulously curated by Hecker Guthrie, is informed by their individual conditions – elevation, aspect, quality of light — to realise canvases in which you can imagine, design and relish your next chapter. Tradition and innovation unite to evolve the familiar, elevate the conventional and enrich the essence of home.



THE ENTRANCE, *Artist impression*



“  
REFLECTING THE BOTANICAL AMBIENCE  
OF CAMBERWELL’S ESTABLISHED TREE-LINED STREETS,  
VICTORIA HILL HAS BEEN CONCEIVED AS  
A COLLECTION OF RESIDENCES FRAMED BY NATURE  
”

DOMENIC CERANTONIO  
*Managing Principal, Cera Stribley*

THE TREE-LINED TERRACES OF VICTORIA HILL, *Artist impression*





VICTORIA ROAD ELEVATION & LOBBY ENTRANCE, *Artist impression*

If you listen carefully, history sings. Deep baritones reverberate off classic Victorian homes to harmonise with the undulating concrete and brickwork of a facade that reinterprets the ornamentation of Victorian architecture for modernity. A soft percussion whispers through established weeping lilly pilly's adorning balustrades to orchestrate native layers within the built environment which will mature over time to instil serene privacy.



THE ENTRANCE, *Artist impression*

LOBBY ENTRANCE, *Artist impression*

Mirroring the village-like charm of the street, neighbours mingle and then depart, crossing thresholds into private lift lobbies to leave behind a quietude filled with the memory of an evening spent in good company.





A  
L I F E  
I N T H E  
M A K I N G

“These residences redefine traditional apartments by taking the spatial qualities of a house and the connection and amenity of an apartment,” says Time & Place’s Edward Pearse. “They respond to contemporary lifestyles to realise something new and fresh.”

Living spaces have been cultivated to exude a sense of familiarity through generous scale and agile spatial arrangements suited to myriad functions. Interiors host a series of intimate environments which open onto expansive terraces. Noble materials find tangible connections to native outlooks unifying with clean lines, soft tones and contemporary interpretations on traditional details. Figured natural stonework, grained oak, cut-pile plush wool carpet and hand-crafted brass feature lighting set the mood for spaces designed for sensorial engagement.



THREE BEDROOM DINING, Artist impression



THREE BEDROOM DINING & KITCHEN, *Artist impression*

RIGHTSIZING WITHOUT COMPROMISE

There is no compromising on the familiar; family gathers around your dining table as they have for decades, relishing the rituals and idiosyncrasies of sharing a meal against a backdrop of greenery and the distant Melbourne skyline. The art of home is felt deeply: rest, relate, restore, reinvent.



THREE BEDROOM LIVING, Artist impression

OPEN TO A NEW LIVING EXPERIENCE

Supported by Hecker Guthrie's design, your home is an exquisite canvas poised for expressions of you; the details speak to your experience, intermingling edited iterations of heritage design with sophisticated innovation considerate of modern living patterns. Soft shadows cascade across expansive rooms where the familiar holds court with the evolved to culminate in the realisation of a discerning, future-focused home.

“  
WE WANT RESIDENTS TO FEEL  
LIKE THEY HAVE ALWAYS LIVED  
WITHIN THE SPACE

”  
THE STUDIO OF HECKER GUTHRIE



*the heart of the home*



THE KITCHEN, *Artist impression*

## GRAND SCALE PROPORTIONS

Your life surrounds you, curated with an abundance of space to allow breathing room around styling to accommodate the extended family. Seamlessly integrated storage abides by impulses to collect and celebrate. Distinct enclaves of navigation invite movement of both passion and purpose. Flexible living enables new obsessions, more family members, bigger dinner parties — or a quiet moment for you. Lock-up garages, plentiful storage and interpretable rooms (used as a study, library, second living room, or for dressing) redefines the proportions of a stand-alone home into a contemporary apartment composition.



A N  
E X P R E S S I O N  
O F U S

“  
THESE RESIDENCES REDEFINE TRADITIONAL APARTMENTS  
BY TAKING THE SPATIAL QUALITIES OF A HOME AND  
THE CONNECTION AND AMENITY OF AN APARTMENT TO  
REALISE SOMETHING NEW AND FRESH  
”

EDWARD PEARSE  
*Director, Time & Place*



THE KITCHEN, *Artist impression*

THE VIEW FROM THE KITCHEN, *Artist impression*THE KITCHEN FEATURING WOLF APPLIANCES, *Artist impression*

#### STYLE & SUBSTANCE

Each home presents an opportunity for future residents to collaborate. Details are considered as part of a personalised design experience with handpicked finishes, kitchen and bathroom options to choose from and customised home automation. “We want occupants to feel like they have always lived within the space,” says the Studio of Hecker Guthrie. Let quiet pour over you, as you pour a drink to toast the day that was.

R O O M S T O  
E N T E R T A I N



ROOMS TO  
RETREAT





THE MASTER BEDROOM, Artist impression



THE MASTER ENSUITE, Artist Impression



WASHROOM, *Artist impression*

“We wanted to create a multi-residential typology that would give residents a living experience that feels more akin to a stand-alone dwelling than that of traditional apartments,” says Dom Cerantonio. Cera Stribley’s design seeks to create a sense of longevity. In parallel with the lives of its residents, the building’s modern-classic design will establish a legacy.



THE MASTER ENSUITE, *Artist impression*



RESIDENT SERVICES  
DESIGNED TO ENHANCE  
THE EXPERIENCE OF HOME

Designed to complement the uncompromising lifestyle luxury that Victoria Hill encapsulates are a selection of intuitive resident services, including a premium providore on the ground floor, that offer a measure of effortless convenience. EV charging infrastructure, bike storage, parcel delivery and dog wash facilities are a selection of the services that can be accessed for and from each residence.

 <p>LOCK UP &amp; LEAVE SCHEDULER</p>	 <p>VEHICLE SERVICES</p>	 <p>GARAGE ASSISTANT</p>
 <p>DRY CLEANING</p>	 <p>PARCEL MANAGEMENT</p>	 <p>PLANT WATERING</p>
 <p>WASTE MANAGEMENT</p>	 <p>VIRTUAL CONCIERGE</p>	 <p>DOG WALKING</p>

A  
N E I G H B O U R H O O D  
T O C A L L  
H O M E

Locality is integral to Victoria Hill. The refined and elegant Camberwell – known for its lush gardens and heritage architecture – is one of Melbourne’s most sought-after suburbs. Laughter blooms and shared stories build amidst its bricks and mortar. Gardens grow as relationships do, bonding residents to this time and this place.

Underpinned by a connection to the surrounding locality, Victoria Hill features the eastern suburbs’ first Gum Tree Good Food grocer and cafe on the ground floor.



FRITSCH HOLZER PARK, CAMBERWELL



“  
 FOOD IS THE CORNERSTONE OF RITUAL AND CONNECTION.  
 WE WANT TO GIVE LOCALS AN EXPERIENCE THAT ENABLES  
 THEM TO PURCHASE QUALITY PRODUCE WHERE THEY  
 LIVE, TO BIND THEM TO THE FABRIC OF THEIR LOCALE  
 AND FOSTER VILLAGE CHARM  
 ”

GUM TREE GOOD FOOD  
 LOCAL PROVIDORE

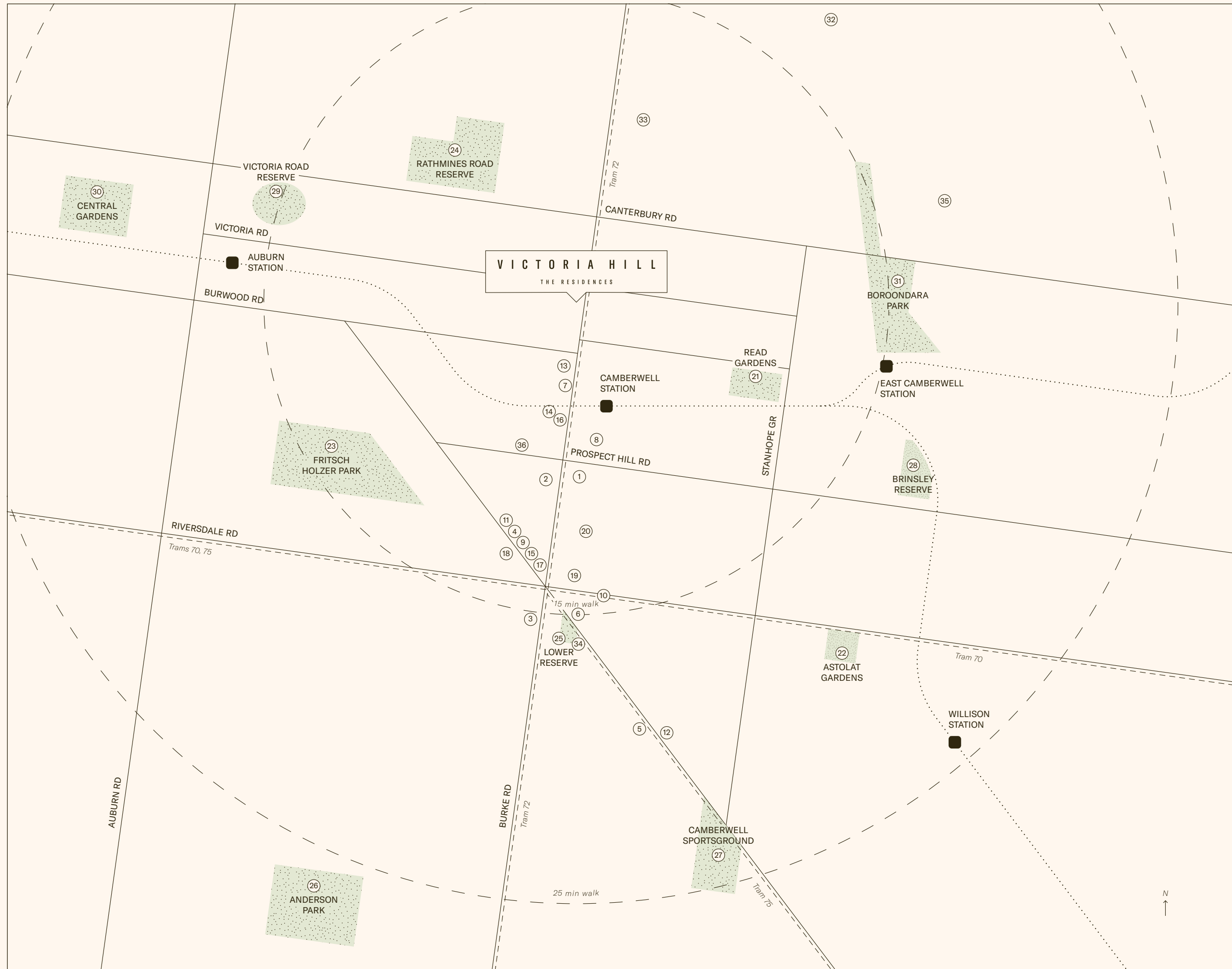
GUM TREE GOOD FOOD, BRIGHTON



FRITSCH HOLZER PARK



THE RIVOLI CINEMA



CAFÉS & RESTAURANTS

1. Prospect Espresso
2. Italy 1
3. Nigel
4. Fiorelli
5. Ignite
6. Con Noi Italian Trattoria
7. Afghan Village
8. 1961 Coffee Roasters
9. Ambrosia
10. Gracie Greco
11. Franco-Belge
12. Chapter21
13. Taku Japanese

BARS

14. Bar None
15. East End Wine Bar
16. East of Everything
17. Young's Wine Room

ART & CULTURE

18. Rivoli Cinema
19. Camberwell Fresh Food Market
20. Camberwell Sunday Market

GARDENS

21. Read Gardens
22. Astolat Gardens
23. Fritsch Holzer Park
24. Rathmine's Reserve
25. Lower Reserve
26. Anderson Park
27. Camberwell Sportsground
28. Brinsley Reserve
29. Victoria Road Reserve
30. Central Gardens
31. Boroondara Park

SCHOOLS

32. Camberwell Grammar School
33. Camberwell Girls Grammar School
34. Camberwell Primary School
35. Canterbury Child Care
36. Camberwell Junction Early Learning Centre



FRANCO BELGE



YOUNG'S WINE ROOM



CAMBERWELL MARKET



HAIKU

*Looking out the window,  
pause to watch the world*



ITALY 1



DECO



EAST END WINE BAR

THE TEAM

Your home is in great hands, with collaborators who live the modern Victorian experience.



THE HARRINGTON COLLECTION



TOORAK HOME



CARLTON RESIDENCE



17 SPRING STREET

TIME & PLACE

Melbourne-based Time & Place ground their design in the way their properties impact day-to-day human needs.

CERA STRIBLEY

Architects Chris Stribley and Dom Cerantonio of Cera Stribley curate spaces with consideration for aspects, spatiality and a deep connection to landscape.

HECKER GUTHRIE

Hecker Guthrie, led by co-directors Paul Hecker and Hamish Guthrie, relish the opportunity to challenge new ideas, while maintaining a timeless outcome.

HACER

Hacer has pioneered quality, sustainability and built innovation across a diverse portfolio of landmark projects unified by their emphasis on design and place.



*a life lived, a life living*

VICTORIAHILLCAMBERWELL.COM.AU

DISCLAIMER:

This marketing brochure (material) has been prepared prior to obtaining planning approvals and prior to the commencement of construction of Victoria Hill (development). As a purchaser or potential purchaser, you should be aware that this material is representational only and that changes may be made to this material, plans and/or the development during the approval, planning or construction phase of the development. Specifications, plans (interior and exterior), details, fittings, fixtures, finishes, facades (including internal and external dimensions and orientations) may be changed without notice. Photographs, neighbourhood amenities and landmarks, illustrations and artists impressions depicting parks, landscaping, interiors, floorplans, apartment configurations, exteriors and views are indicative, intended as a guide only and may change without notice. Customisation, options and upgrades are subject to other terms and conditions including payment variations. Furniture, furnishings and appliances depicted are intended as a guide only and are not included. The information in this material is believed to be correct but is not guaranteed. This document is not an offer or a contract. CW Victoria Hill Pty Ltd ACN 654 885 739 as trustee for CW Victoria Hill Unit Trust expressly disclaims any and all liability relating to, or resulting from, the use of reliance on, any information contained in this material by any person. Printed October 2022.

**TIME &  
PLACE**